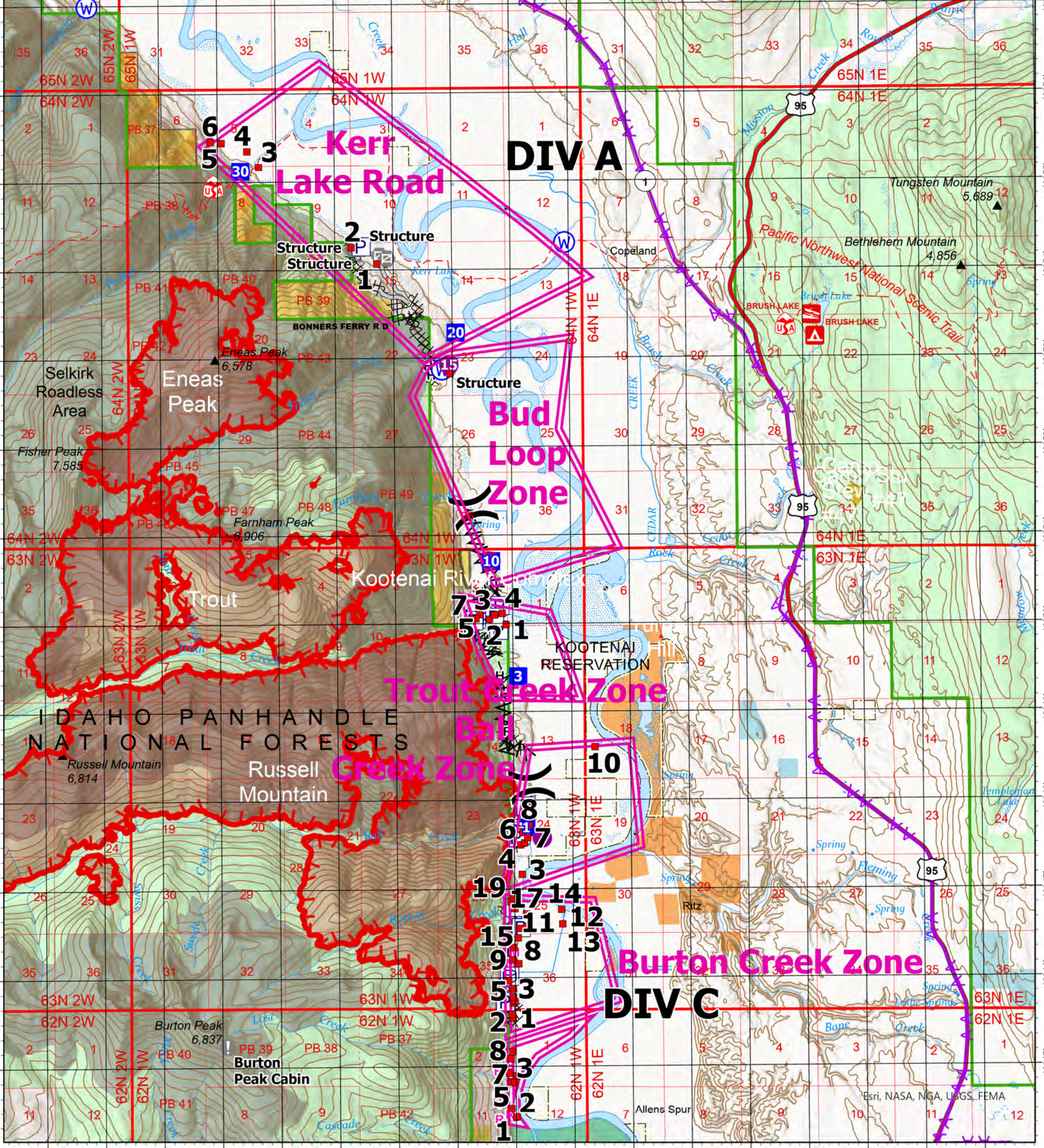


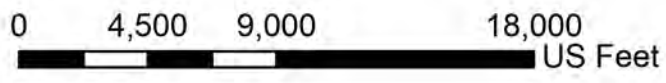
# Legend

- structure\_zones
- Air Operations**
- Helispot
- Assignment Breaks**
- )) Division Break
- Logistics**
- Drop Point
- Reference**
- ! Value at Risk
- ⊘ Gate
- Water**
- W Water Source
- ⊗⊗ Completed Dozer Line
- ⊗ Completed Fuel Break
- H— Completed Hand Line
- R— Completed Road as Line
- H · Planned Hand Line
- M · Planned Mixed Construction Line
- R · Planned Road as Line
- Access or Improved Road
- US Primary Route
- State Primary Route
- Bureau of Land Management Wilderness Study Area
- Structure Assessment



## Structure Zones

Kootenai River Complex  
 2022-IDIPF-000653  
 9/10/2022  
 18,464 acres at 9/9/22 2150  
 Acres from IR



NR Team 4  
 9/10/2022 0610  
 North American 1983 Datum.