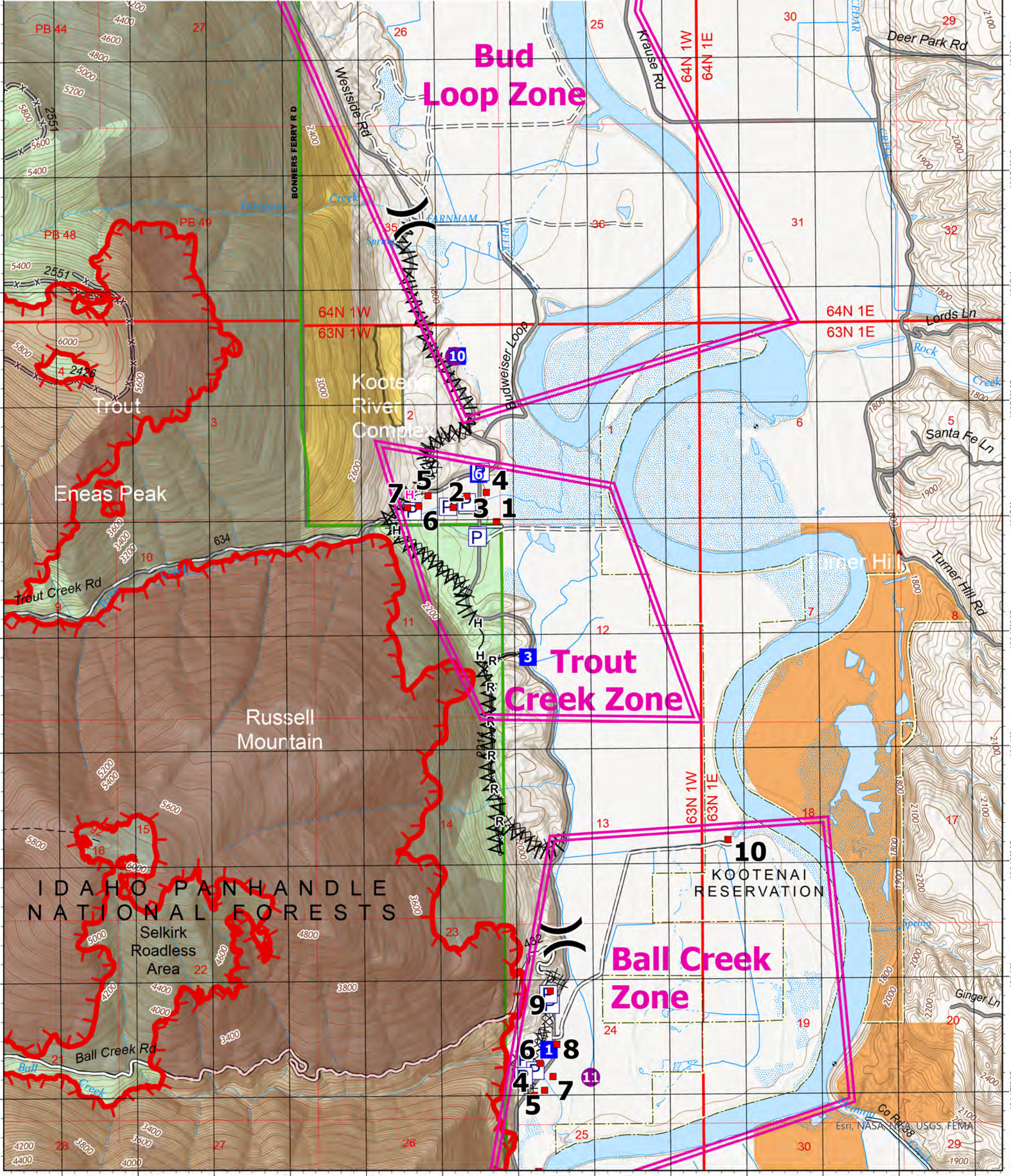


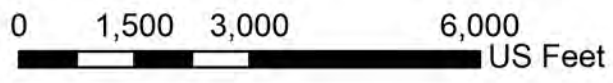
Legend

- structure_zones
- Air Operations**
- Helispot
- Assignment Breaks**
-)) Division Break
- Logistics**
- Drop Point
- Reference**
- ⚠ Value at Risk
- Water**
- W Water Source
- XX XX Completed Dozer Line
- Λ Completed Fuel Break
- Completed Hand Line
- Completed Road as Line
- H Planned Hand Line
- Paved Roads
- Dirt (Not Paved)
- Structure_Assessment



Trout Creek Zone

Kootenai River Complex
 2022-IDIPF-000653
 9/10/2022
 18,464 acres at 9/9/22 2150
 Acres from IR



NR Team 4
 9/10/2022 0610
 North American 1983 Datum.