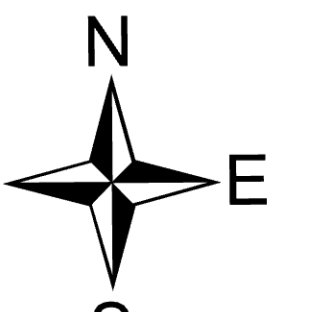
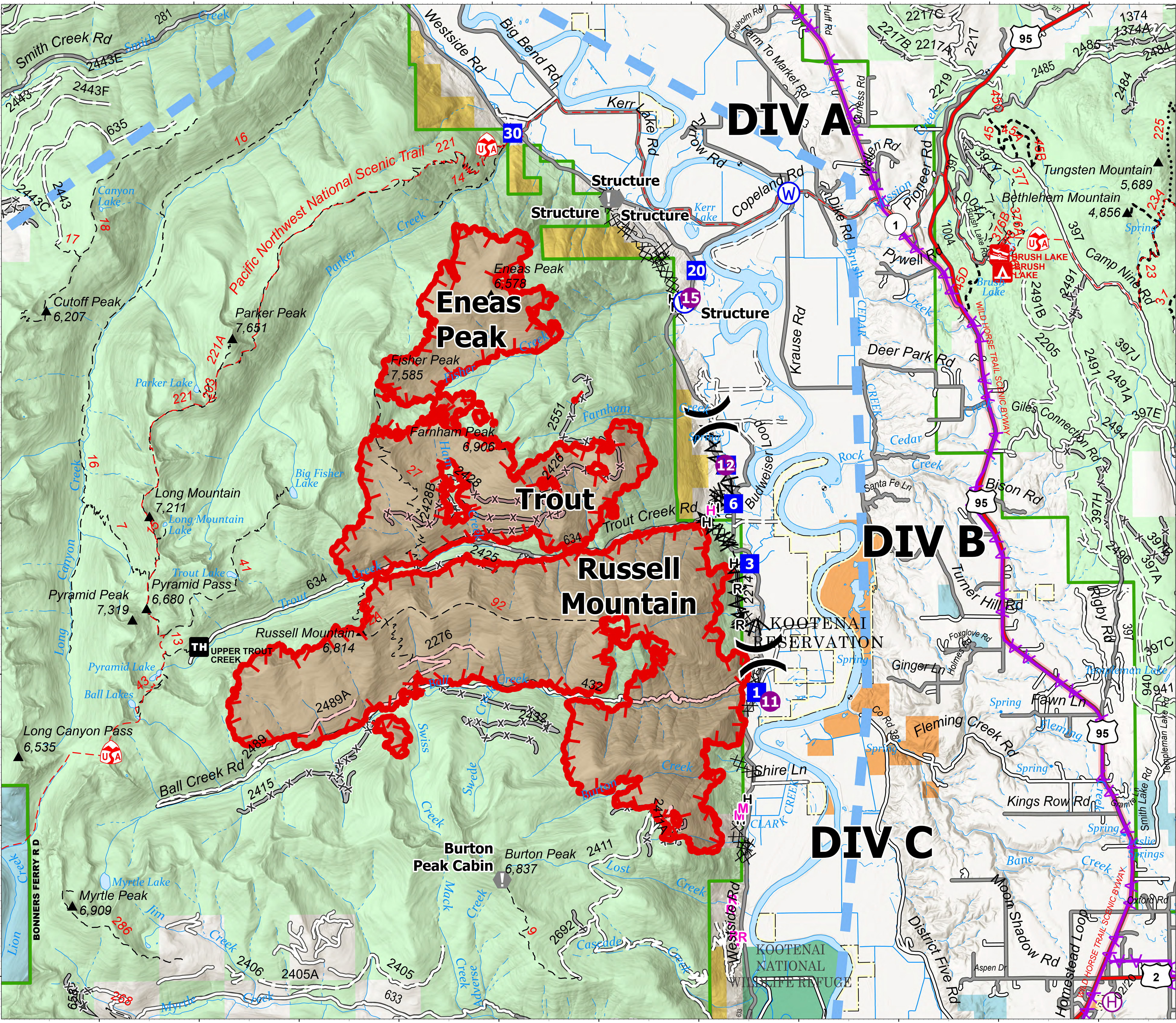


Briefing North

Kootenai River Complex
 2022-IDIPF-000653
 9/10/2022
 18,464 acres at 9/9/22 2150
 Acres from IR



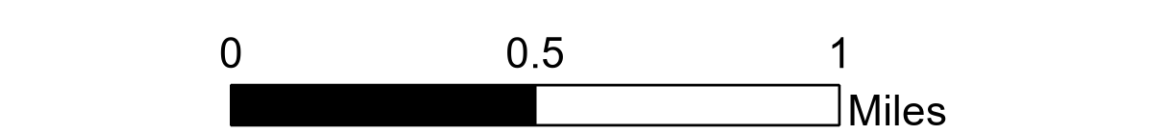
- Helispot
- H Helibase
- Division Break
- Drop Point
- Value at Risk
- W Water Source
- Completed Dozer Line
- Completed Fuel Break
- Completed Hand Line
- Completed Road as Line
- Planned Hand Line
- Planned Mixed Construction Line
- Planned Road as Line
- Access or Improved Road
- Aerial Hazard
- Temporary Flight Restriction
- Wildfire Daily Fire Perimeter
- US Primary Route
- State Primary Route
- Paved Roads
- Dirt (Not Paved)
- Forest Service Land
- State Public Lands
- U.S. Fish Wildlife Service Lands
- Bureau of Land Management Lands



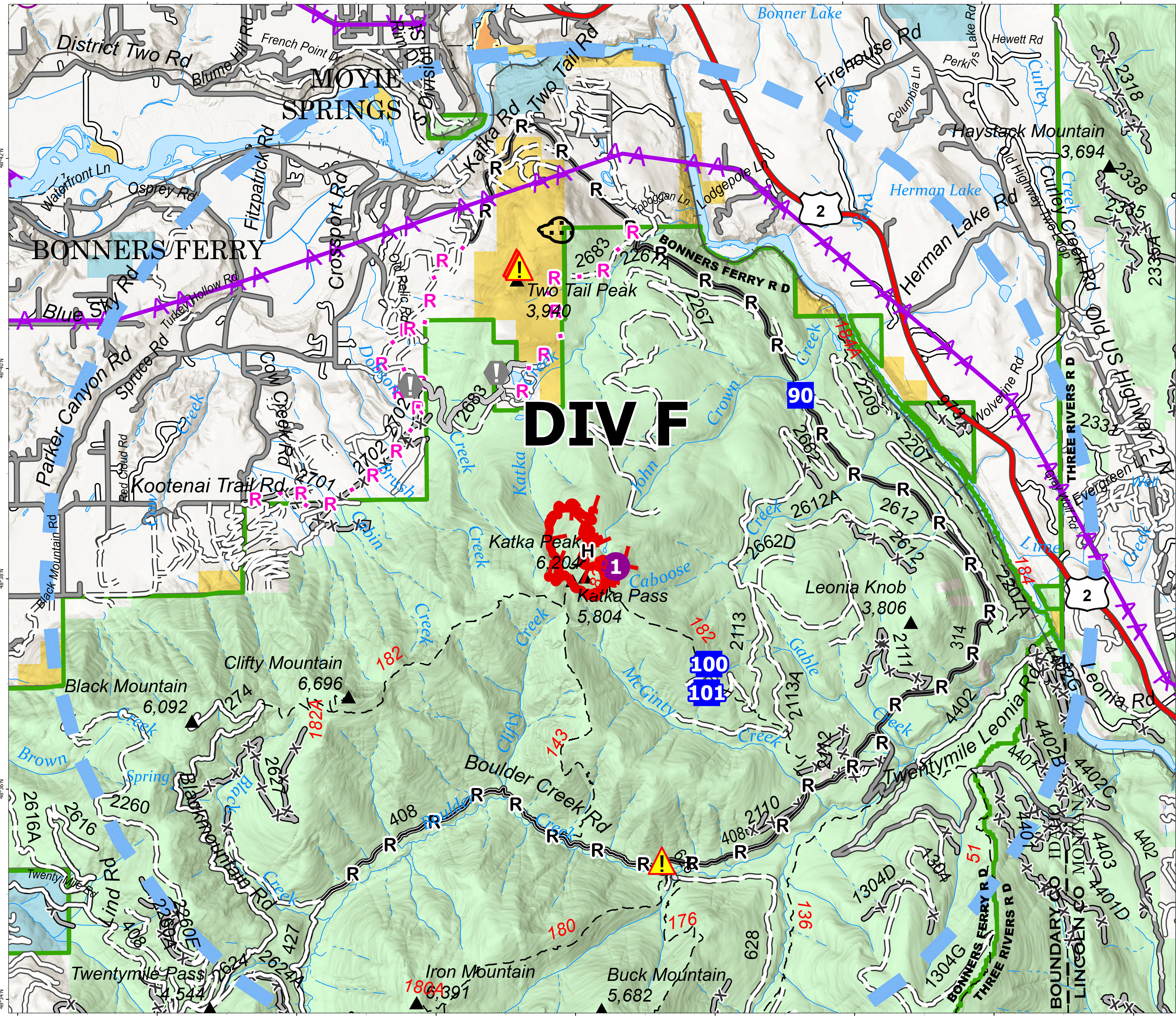
NR Team 4
 9/10/2022 0613
 North American 1983 Datum, Lat,Long Grid

Briefing South

Kootenai River Complex
2022-IDPF-000653
9/10/2022
18,464 acres at 9/9/22 2150
Acres from IR



- Helispot
- ⊕ Helibase
- Drop Point
- ⛑ Camp
- ⚠ Value at Risk
- ⚠ Hazard
- H- Completed Hand Line
- R- Completed Road as Line
- R Planned Road as Line
- Access or Improved Road
- - - Aerial Hazard
- Temporary Flight Restriction
- US Primary Route
- Paved Roads
- Dirt (Not Paved)
- Forest Service Land
- State Public Lands
- Bureau of Land Management Lands



North American 1983 Datum, Lat/Long Grid