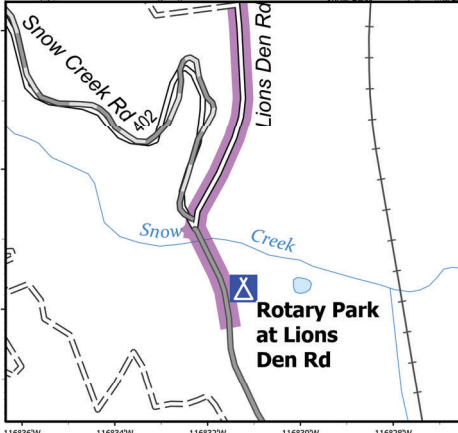
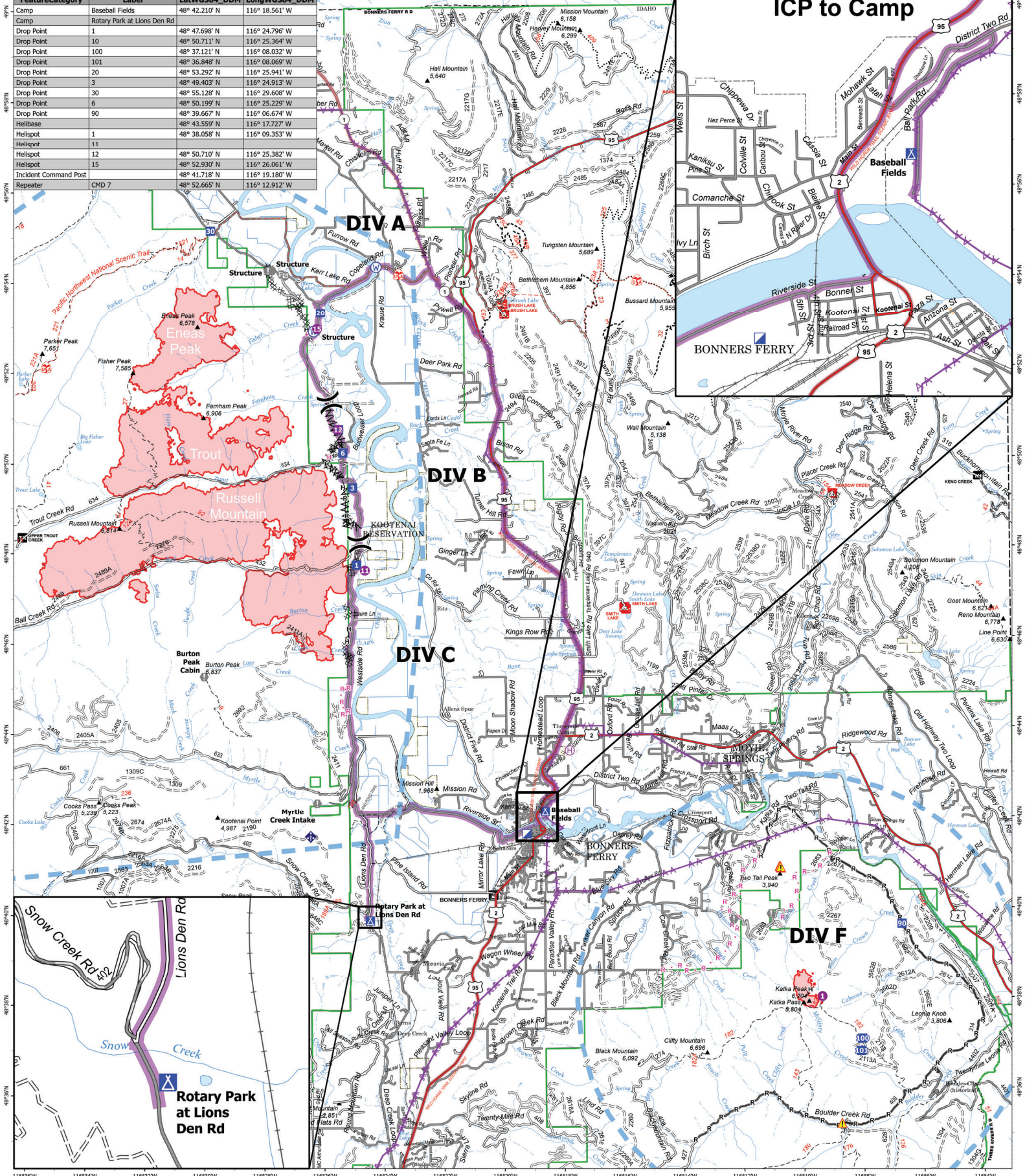
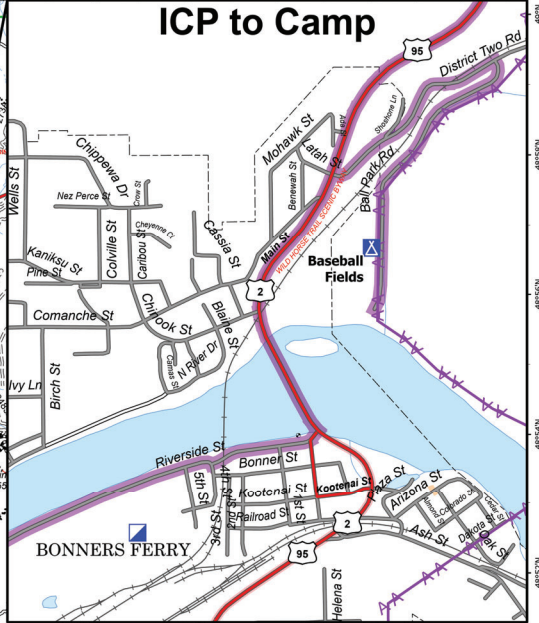


FeatureCategory	Label	LatWGS84_DDM	LongWGS84_DDM
Camp	Baseball Fields	48° 42.210' N	116° 18.561' W
Camp	Rotary Park at Lions Den Rd		
Drop Point	1	48° 47.698' N	116° 24.796' W
Drop Point	10	48° 50.711' N	116° 25.364' W
Drop Point	100	48° 37.121' N	116° 08.032' W
Drop Point	101	48° 36.848' N	116° 08.069' W
Drop Point	20	48° 53.292' N	116° 25.941' W
Drop Point	3	48° 49.403' N	116° 24.913' W
Drop Point	30	48° 55.128' N	116° 29.608' W
Drop Point	6	48° 50.199' N	116° 25.229' W
Drop Point	90	48° 39.667' N	116° 06.674' W
Helibase	48° 43.559' N	116° 17.727' W	
Helispot	1	48° 38.058' N	116° 09.353' W
Helispot	11		
Helispot	12	48° 50.710' N	116° 25.382' W
Helispot	15	48° 52.930' N	116° 26.061' W
Incident Command Post		48° 41.718' N	116° 19.180' W
Repeater	CMD 7	48° 52.665' N	116° 12.912' W



## Transportation

Kootenai River Complex  
2022-IDIPF-000653  
09/10/2022  
17,376 acres at 9/8/22 2129  
Acres from IR



- |                       |                      |                         |                               |
|-----------------------|----------------------|-------------------------|-------------------------------|
| Travel Route          | Value at Risk        | Completed Fuel Break    | Temporary Flight Restriction  |
| Helispot              | Gate                 | Completed Hand Line     | Wildfire Daily Fire Perimeter |
| Helibase              | Mobile Weather Unit  | Completed Road as Line  | US Primary Route              |
| Division Break        | Repeater             | Planned Hand Line       | US Secondary Route            |
| Incident Command Post | Hazard               | Planned Road as Line    | State Primary Route           |
| Drop Point            | Water Source         | Access or Improved Road | Paved Roads                   |
| Camp                  | Completed Dozer Line | Aerial Hazard           | Dirt (Not Paved)              |

