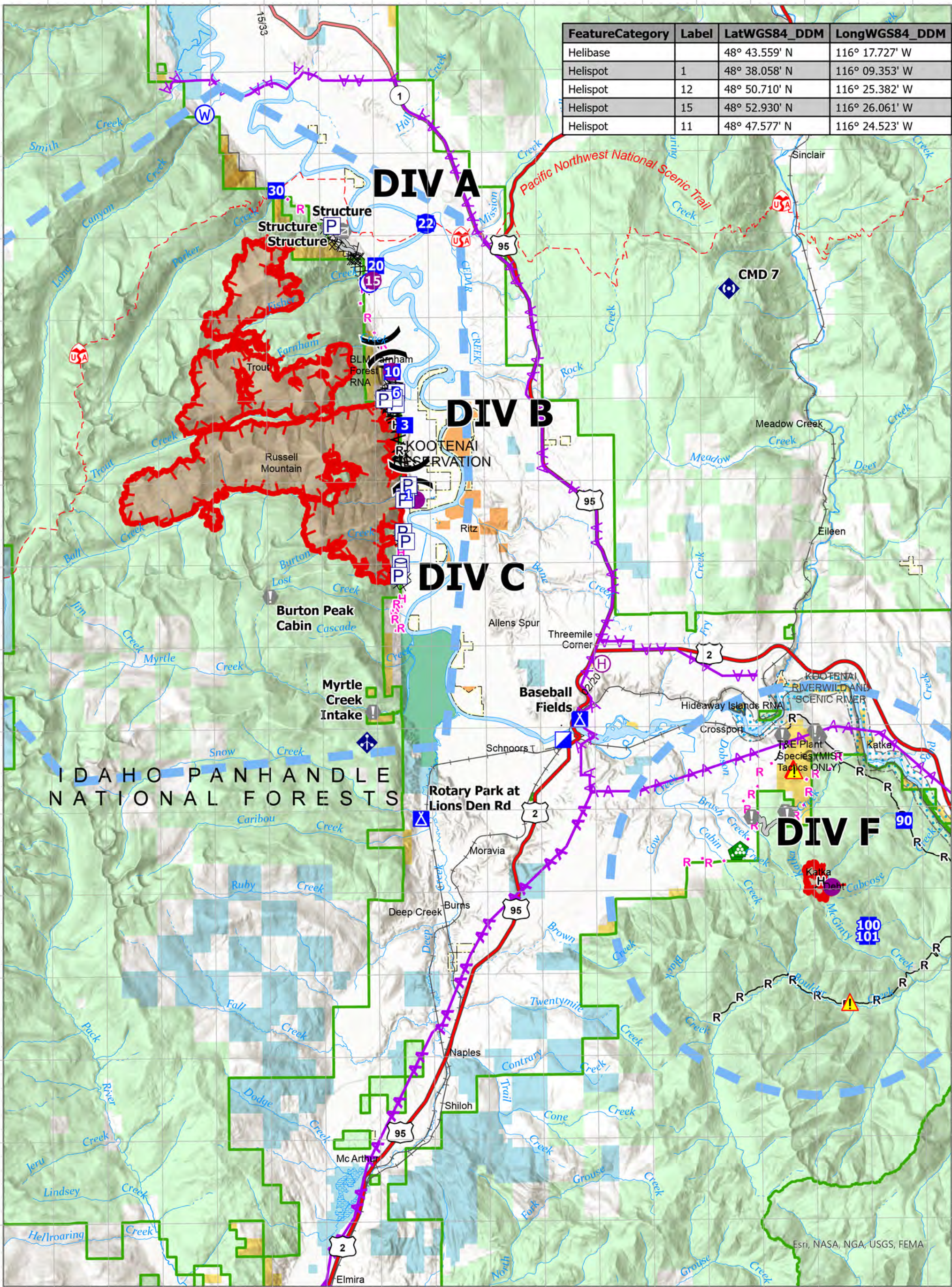


FeatureCategory	Label	LatWGS84_DDM	LongWGS84_DDM
Helibase		48° 43.559' N	116° 17.727' W
Helispot	1	48° 38.058' N	116° 09.353' W
Helispot	12	48° 50.710' N	116° 25.382' W
Helispot	15	48° 52.930' N	116° 26.061' W
Helispot	11	48° 47.577' N	116° 24.523' W

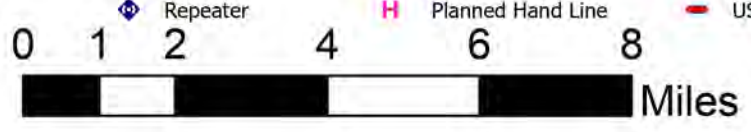


**Air Ops**  
**Kootenai River Complex**  
**2022-IDIPF-000653**  
**9/11/2022**

- [P] Pump
- [A] Camp
- [Hazard Symbol] Hazard
- [R] Planned Road as Line
- [Water Tank Symbol] Water Tank
- [Value at Risk Symbol] Value at Risk
- [W] Water Source
- [=] Access or Improved Road
- [Helispot Symbol] Helispot
- [Other Symbol] Other
- [X] Completed Dozer Line
- [-] Aerial Hazard
- [H] Helibase
- [Gate Symbol] Gate
- [^] Completed Fuel Break
- [Temporary Flight Restriction Symbol] Temporary Flight Restriction
- [Division Break Symbol] Division Break
- [Landing or Log Deck Symbol] Landing or Log Deck
- [H] Completed Hand Line
- [Other Symbol] Other
- [Incident Command Post Symbol] Incident Command Post
- [Mobile Weather Unit Symbol] Mobile Weather Unit
- [R] Completed Road as Line
- [Red Box Symbol] Wildfire Daily Fire Perimeter
- [Drop Point Symbol] Drop Point
- [Repeater Symbol] Repeater
- [H] Planned Hand Line
- [Red Line Symbol] US Primary Route



19,304 acres at 9/9/22 2150  
 Acres from IR Acres from IR Acres from IR Acres



NR Team 4  
 9/11/2022 0531  
 North American 1983 Datum, Lat/Long Grid