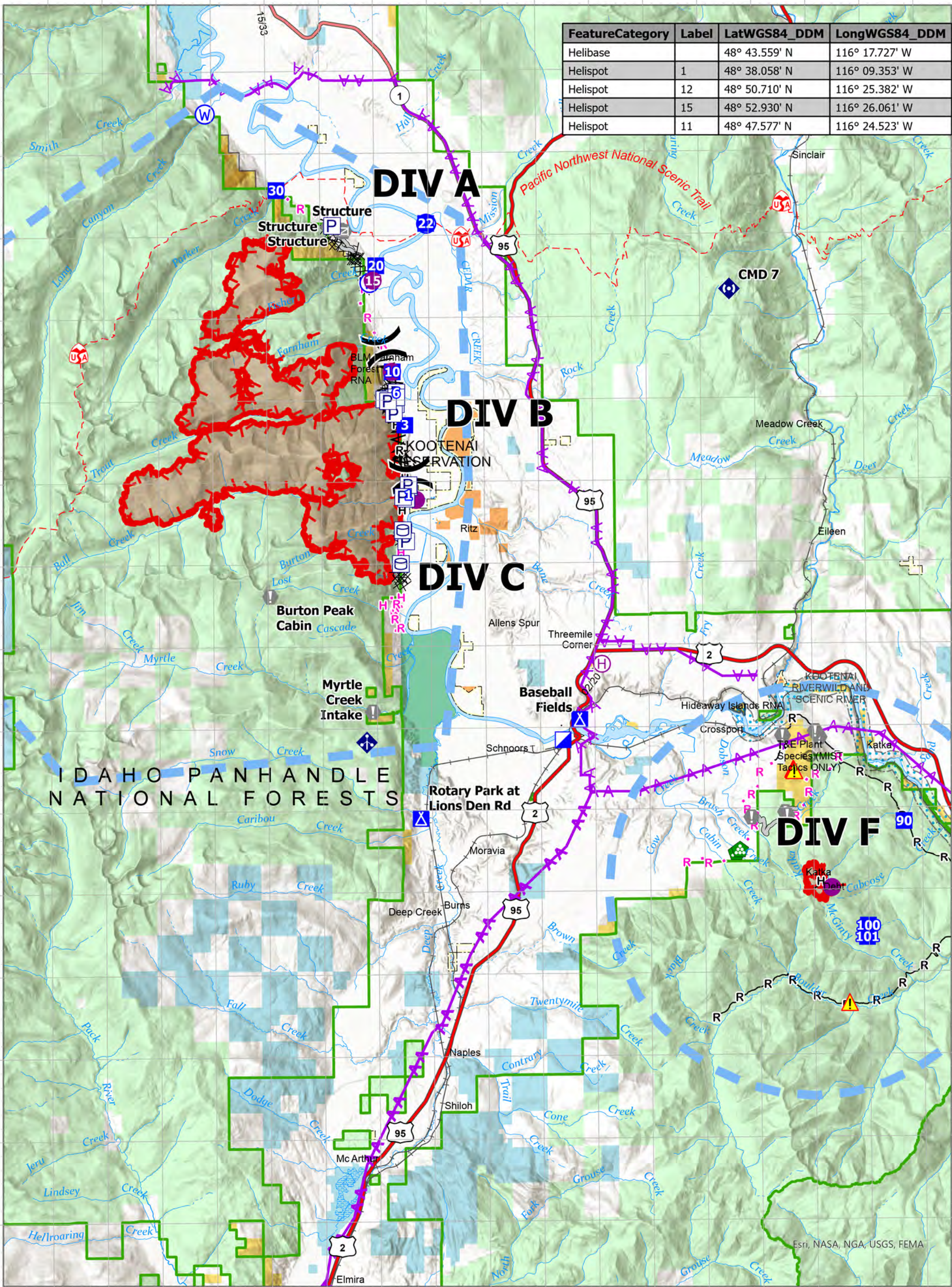


FeatureCategory	Label	LatWGS84_DDM	LongWGS84_DDM
Helibase		48° 43.559' N	116° 17.727' W
Helispot	1	48° 38.058' N	116° 09.353' W
Helispot	12	48° 50.710' N	116° 25.382' W
Helispot	15	48° 52.930' N	116° 26.061' W
Helispot	11	48° 47.577' N	116° 24.523' W

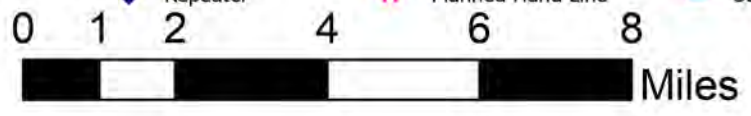


**Air Ops**  
**Kootenai River Complex**  
**2022-IDIPF-000653**  
**9/12/2022**

- |                       |                     |                        |                               |
|-----------------------|---------------------|------------------------|-------------------------------|
| Pump                  | Camp                | Hazard                 | Planned Road as Line          |
| Water Tank            | Value at Risk       | Water Source           | Access or Improved Road       |
| Helispot              | Other               | Completed Dozer Line   | Aerial Hazard                 |
| Helibase              | Gate                | Completed Fuel Break   | Temporary Flight Restriction  |
| Division Break        | Landing or Log Deck | Completed Hand Line    | Other                         |
| Incident Command Post | Mobile Weather Unit | Completed Road as Line | Wildfire Daily Fire Perimeter |
| Drop Point            | Repeater            | Planned Hand Line      | US Primary Route              |



19,108 acres at 9/11/22 2015  
 Acres from IR Acres from IR Acres from IR Acres



NR Team 4  
 9/12/2022 0530  
 North American 1983 Datum, Lat/Long Grid