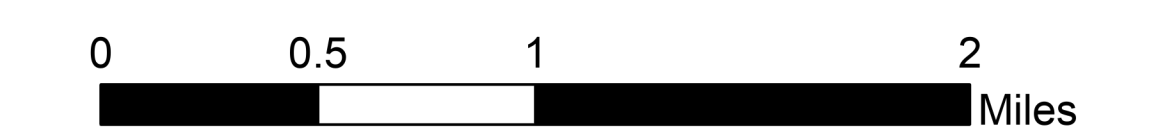


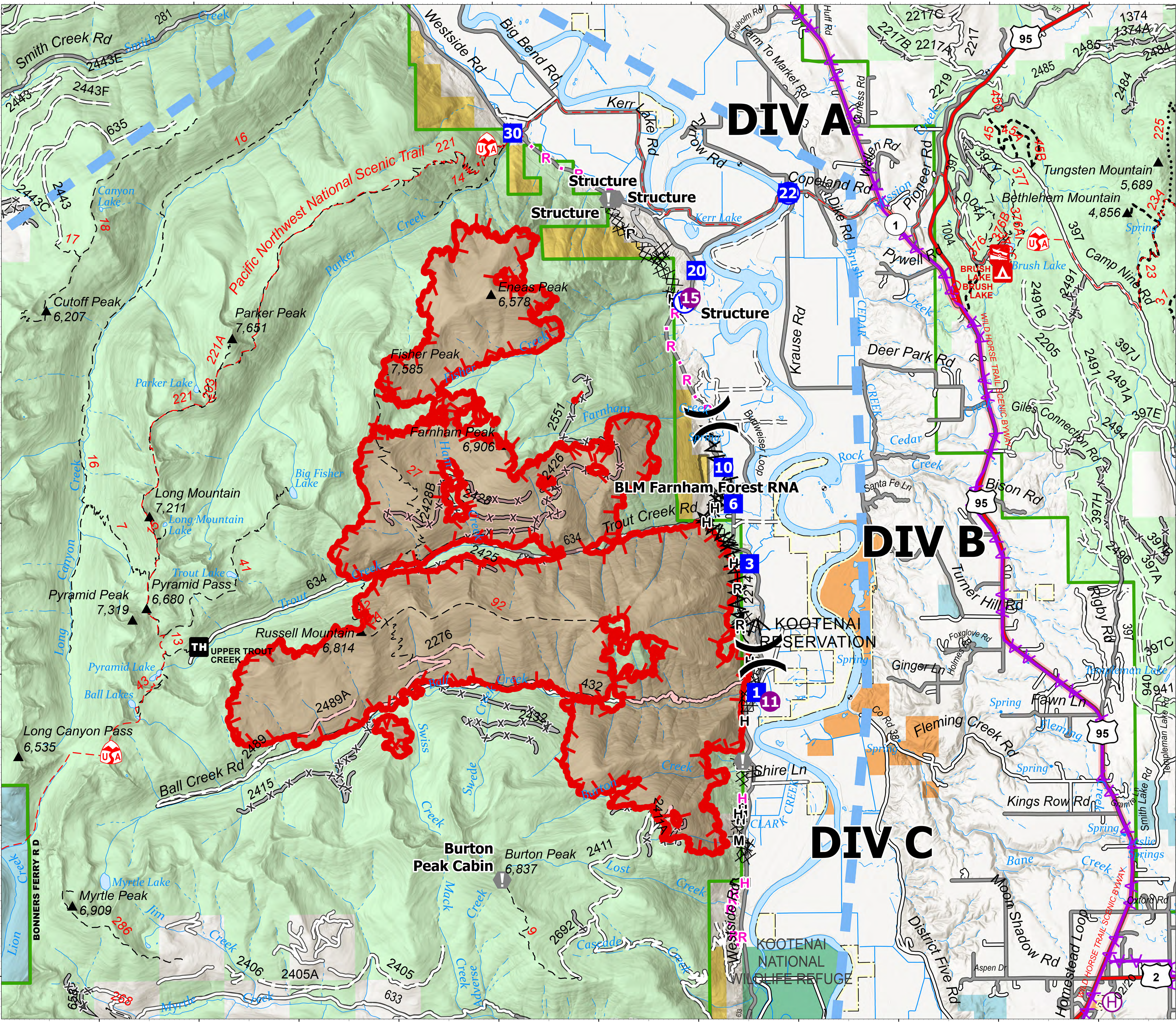
Briefing North

Kootenai River Complex
2022-IDIPF-000653

09/13/2022
19,708 acres at 9/11/22 2015
Acres from IR



- Helispot
- ⊕ Helibase
- ⌋ Division Break
- Drop Point
- ⚠ Value at Risk
- ⊙ Water Source
- ⌘ Completed Dozer Line
- ⌘ Completed Fuel Break
- ⌘ Completed Hand Line
- ⌘ Completed Mixed Construction Line
- ⌘ Completed Road as Line
- ⌘ Planned Hand Line
- ⌘ Planned Road as Line
- Access or Improved Road
- Aerial Hazard
- Temporary Flight Restriction
- Other
- ▭ Wildfire Daily Fire Perimeter
- US Primary Route
- State Primary Route
- Paved Roads
- Dirt (Not Paved)
- Forest Service Land
- State Public Lands
- U.S. Fish Wildlife Service Lands
- Bureau of Land Management Lands

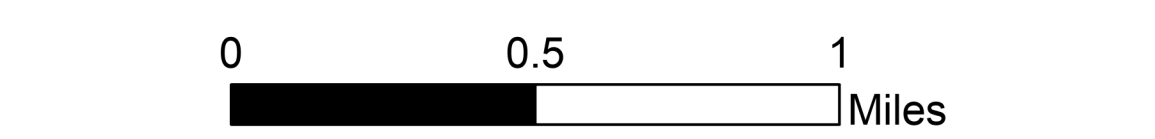


NR Team 4
9/12/2022 2135
North American 1983 Datum, Lat,Long Grid

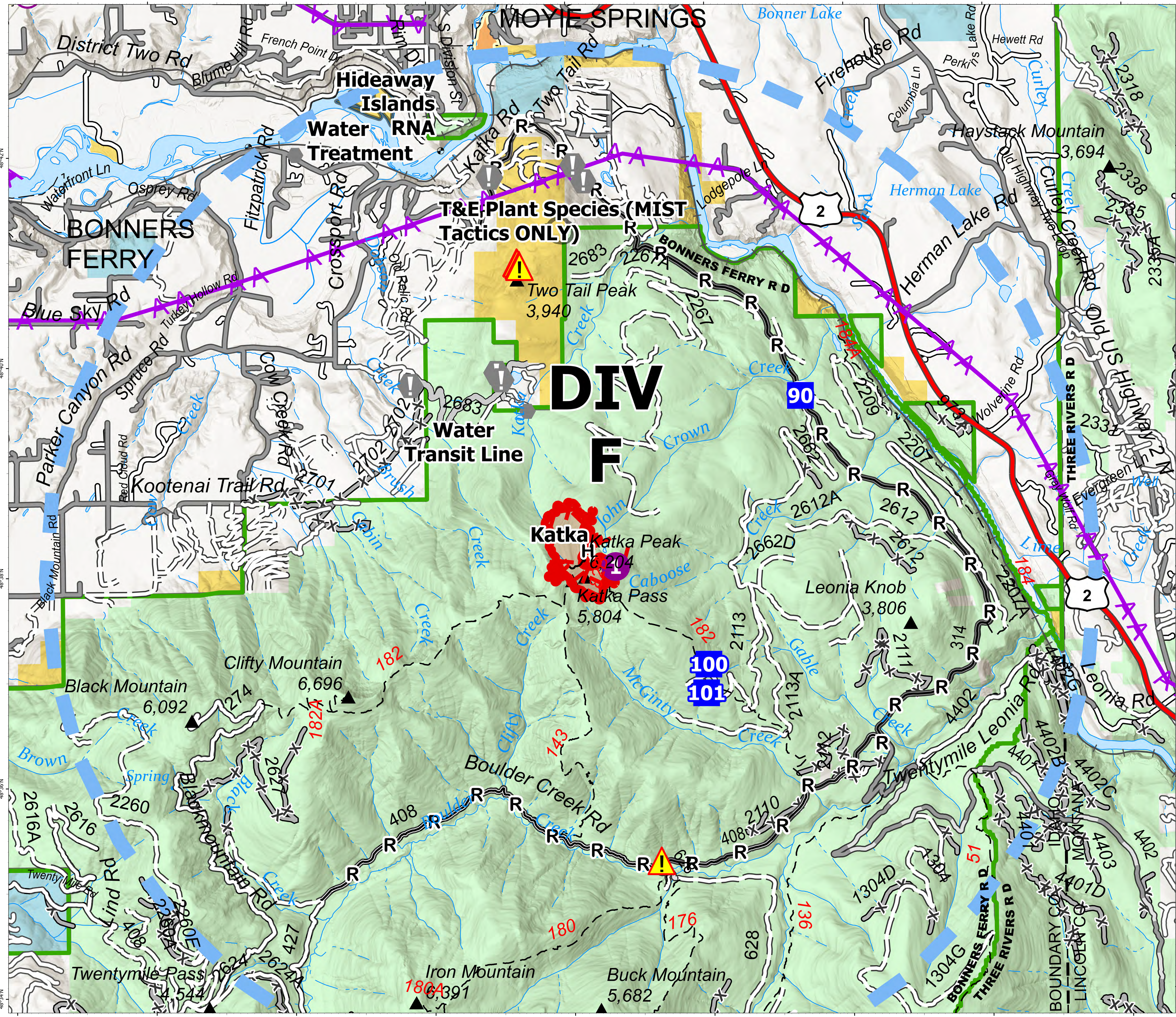
Briefing South

Kootenai River Complex
2022-IDIPF-000653

09/13/2022
19,708 acres at 9/11/22 2015
Acres from IR



- Helispot
- ⊕ Helibase
- Drop Point
- ▲ Camp
- ⚠ Value at Risk
- ⚠ Other
- ⚠ Hazard
- H- Completed Hand Line
- R- Completed Road as Line
- Access or Improved Road
- - Aerial Hazard
- ▭ Temporary Flight Restriction
- ▭ Other
- ▭ Wildfire Daily Fire Perimeter
- US Primary Route
- Paved Roads
- Dirt (Not Paved)
- ▭ Forest Service Land
- ▭ State Public Lands
- ▭ Bureau of Land Management Lands



NR Team 4
9/12/2022 2136
North American 1983 Datum, Lat/Long Grid