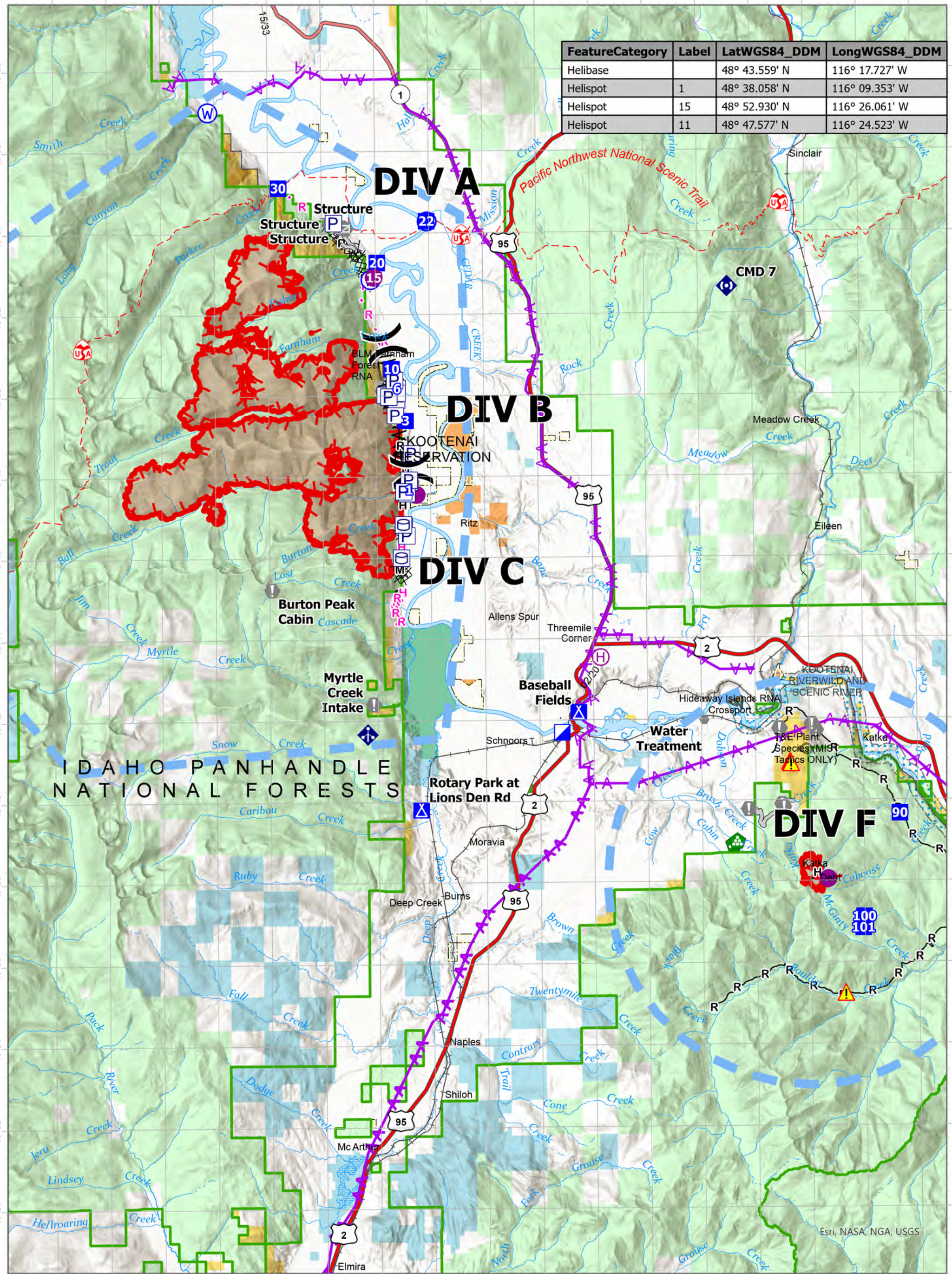


FeatureCategory	Label	LatWGS84_DDM	LongWGS84_DDM
Helibase		48° 43.559' N	116° 17.727' W
Helispot	1	48° 38.058' N	116° 09.353' W
Helispot	15	48° 52.930' N	116° 26.061' W
Helispot	11	48° 47.577' N	116° 24.523' W

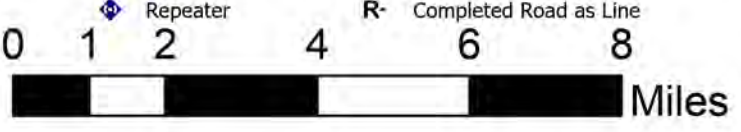


**Air Ops**  
**Kootenai River Complex**  
**2022-IDIPF-000653**  
**09/13/2022**

19,108 acres at 9/11/22 2015

Acres from IR Acres from IR Acres from IR Acres

- [P] Pump
- [A] Camp
- [H] Hazard
- [H] Planned Hand Line
- [W] Water Tank
- [V] Value at Risk
- [W] Water Source
- [H] Helispot
- [O] Other
- [X] Completed Dozer Line
- [H] Helibase
- [G] Gate
- [^] Completed Fuel Break
- [X] Division Break
- [L] Landing or Log Deck
- [H] Completed Hand Line
- [I] Incident Command Post
- [M] Mobile Weather Unit
- [M] Completed Mixed Construction Line
- [D] Drop Point
- [R] Repeater
- [R] Completed Road as Line



NR Team 4  
 9/12/2022 2127  
 North American 1983 Datum, Lat/Long Grid