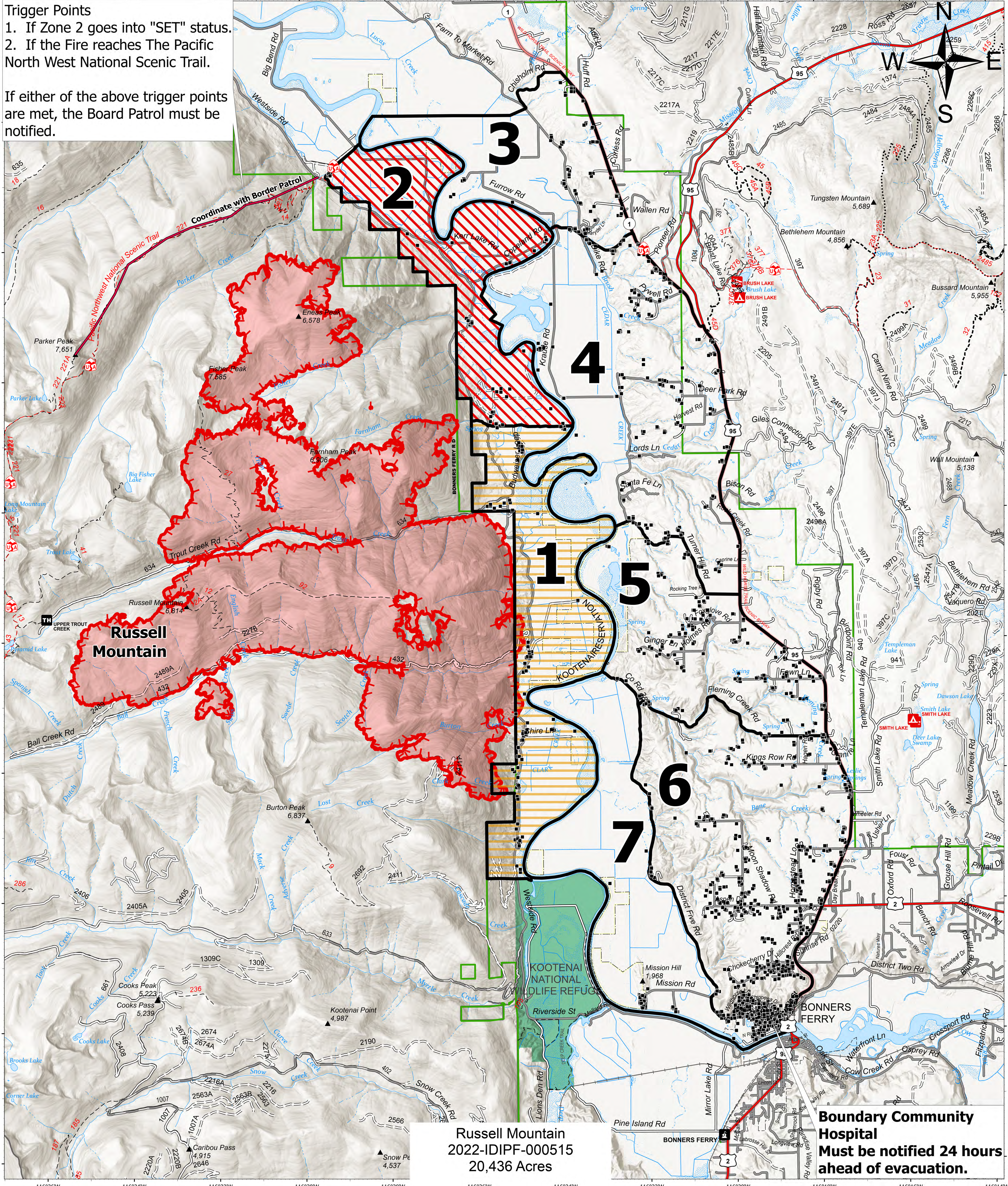


**Trigger Points**  
 1. If Zone 2 goes into "SET" status.  
 2. If the Fire reaches The Pacific North West National Scenic Trail.

If either of the above trigger points are met, the Board Patrol must be notified.



**Russell Mountain**  
 2022-IDIPF-000515  
 20,436 Acres

**Boundary Community Hospital**  
 Must be notified 24 hours ahead of evacuation.

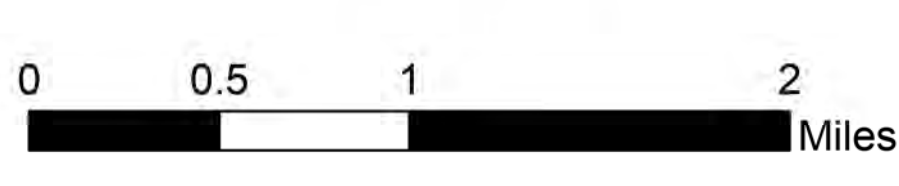
**Ready, Set, Go**

Kootenai River Complex  
 2022-IDIPF-000653  
 9/14/2022  
 20,742 acres at 9/13/22 2015  
 Acres from IR

**Evacuation Areas**

- Ready
- Set
- Go
- Other Evacuation Areas

- Evacuation Area Structures
- Wildfire Daily Fire Perimeter
- U.S. Fish Wildlife Service



Boundary County  
 Emergency Management  
 Public Information  
 (208) 290-5316



Boundary County  
 Sheriff's Office  
 (208) 267-3151