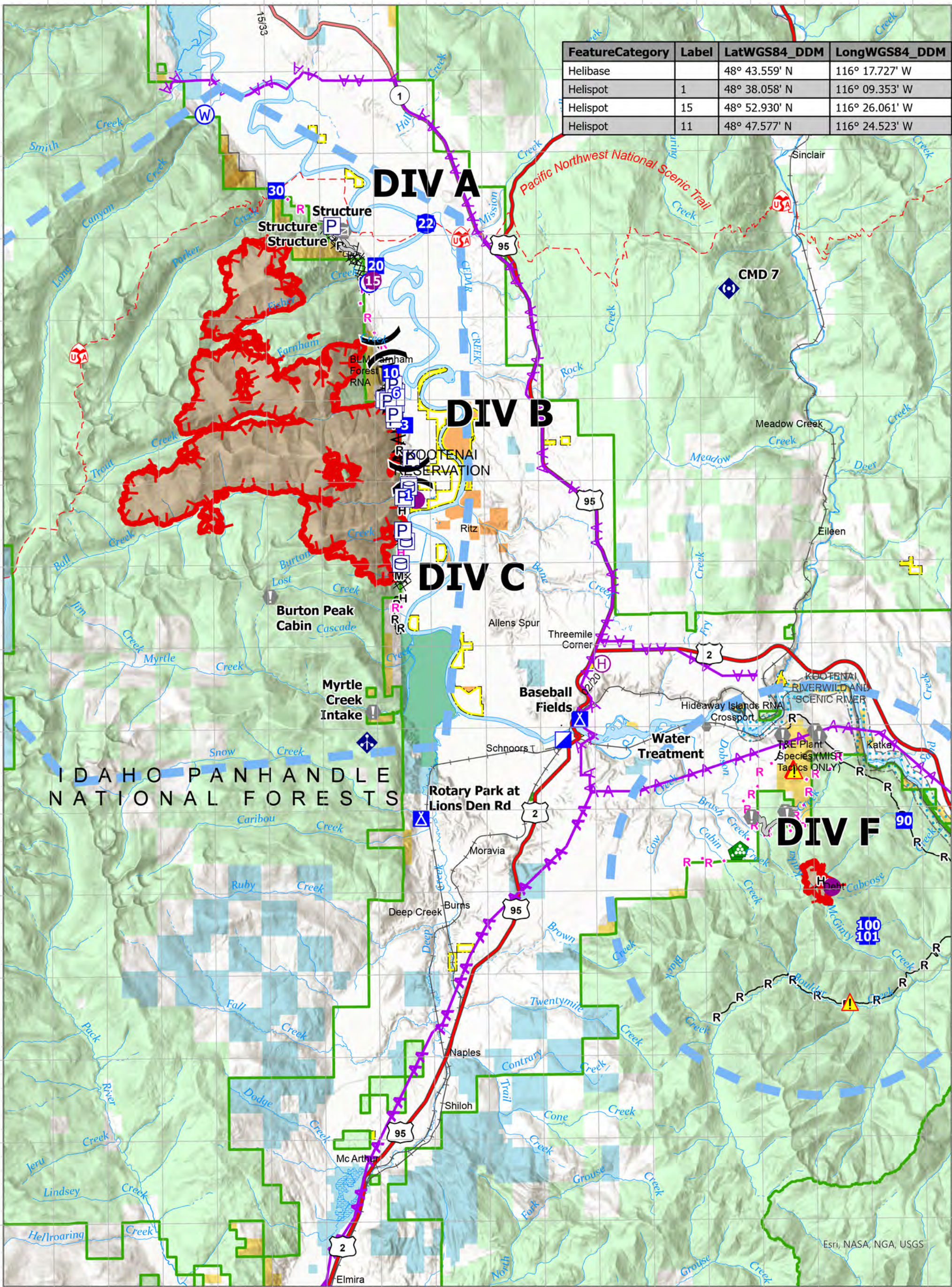


FeatureCategory	Label	LatWGS84_DDM	LongWGS84_DDM
Helibase		48° 43.559' N	116° 17.727' W
Helispot	1	48° 38.058' N	116° 09.353' W
Helispot	15	48° 52.930' N	116° 26.061' W
Helispot	11	48° 47.577' N	116° 24.523' W

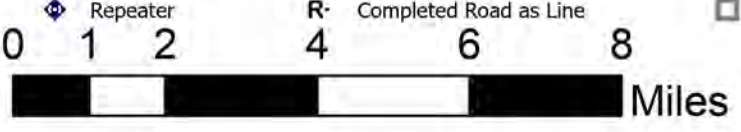


Air Ops
Kootenai River Complex
2022-IDIPF-000653
9/14/2022

20,142 acres at 9/13/22 2015

Acres from IR Acres from IR Acres from IR Acres

- [P] Pump
- [W] Water Tank
- [H] Helibase
- [X] Division Break
- [ICP] Incident Command Post
- [DP] Drop Point
- [C] Camp
- [V] Value at Risk
- [O] Other
- [G] Gate
- [L] Landing or Log Deck
- [M] Mobile Weather Unit
- [R] Repeater
- [HA] Hazard
- [WS] Water Source
- [CDL] Completed Dozer Line
- [CFL] Completed Fuel Break
- [CHL] Completed Hand Line
- [CML] Completed Mixed Construction Line
- [CRL] Completed Road as Line
- [PHL] Planned Hand Line
- [PLL] Planned Plow Line
- [PLR] Planned Road as Line
- [AR] Access or Improved Road
- [AH] Aerial Hazard
- [MFL] Temporary Flight Restriction
- [O] Other



NR Team 4
 9/14/2022 0559
 North American 1983 Datum, Lat/Long Grid