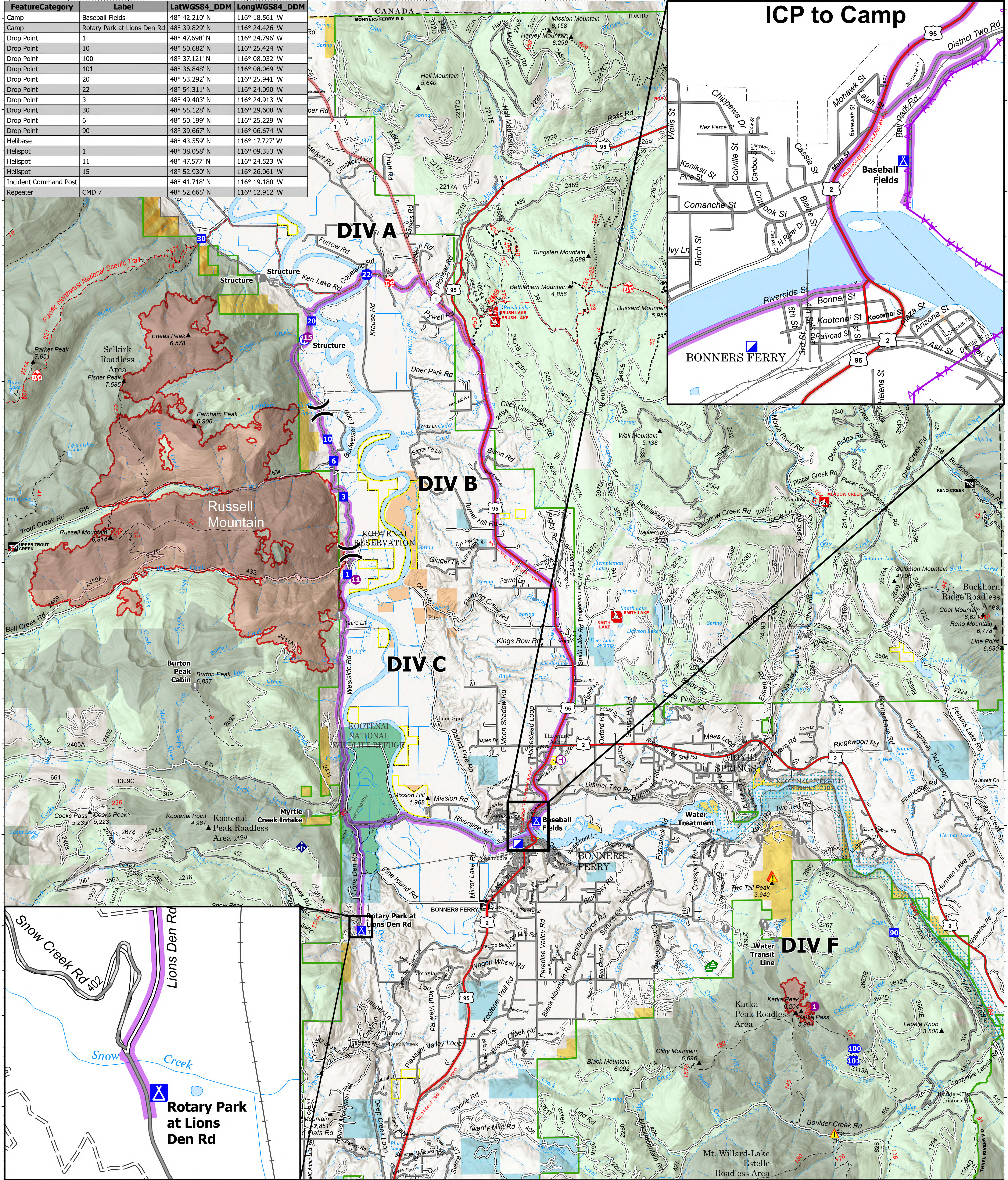


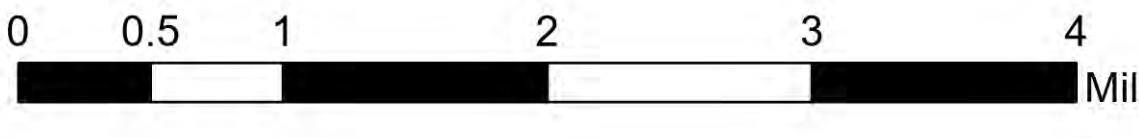
| FeatureCategory | Label | LatWGS84_DDM | LongWGS84_DDM |
|-----------------------|-----------------------------|---------------|----------------|
| Camp | Baseball Fields | 48° 42.210' N | 116° 18.561' W |
| Camp | Rotary Park at Lions Den Rd | 48° 39.829' N | 116° 24.426' W |
| Drop Point | 1 | 48° 47.698' N | 116° 24.796' W |
| Drop Point | 10 | 48° 50.682' N | 116° 25.424' W |
| Drop Point | 100 | 48° 37.121' N | 116° 08.032' W |
| Drop Point | 101 | 48° 36.848' N | 116° 08.069' W |
| Drop Point | 20 | 48° 53.292' N | 116° 25.941' W |
| Drop Point | 22 | 48° 54.311' N | 116° 24.090' W |
| Drop Point | 3 | 48° 49.403' N | 116° 24.913' W |
| Drop Point | 30 | 48° 55.128' N | 116° 29.608' W |
| Drop Point | 6 | 48° 50.199' N | 116° 25.229' W |
| Drop Point | 90 | 48° 39.667' N | 116° 06.674' W |
| Helibase | | 48° 43.559' N | 116° 17.727' W |
| Helispot | 1 | 48° 38.058' N | 116° 09.353' W |
| Helispot | 11 | 48° 47.577' N | 116° 24.523' W |
| Helispot | 15 | 48° 52.930' N | 116° 26.061' W |
| Incident Command Post | | 48° 41.718' N | 116° 19.180' W |
| Repeater | CMD 7 | 48° 52.665' N | 116° 12.912' W |

ICP to Camp



Transportation

Kootenai River Complex
 2022-IDIPF-000653
 9/14/2022
 20,742 acres at 9/13/22 2015
 Acres from IR



- Travel Route
- Helispot
- Helibase
- Division Break
- Incident Command Post
- Drop Point
- Camp
- Value at Risk
- Other
- Gate
- Landing or Log Deck
- Mobile Weather Unit
- Repeater
- Hazard
- Water Source
- Wildfire Daily Fire Perimeter
- US Primary Route
- US Secondary Route
- State Primary Route
- Paved Roads
- Dirt (Not Paved)
- Indian Reservation
- American Indian Lands
- Forest Service Land
- State Public Lands
- U.S. Fish Wildlife Service Lands
- Bureau of Land Management Lands

9/14/2022 0549
 North American 1983 Datum, LatLong Grid