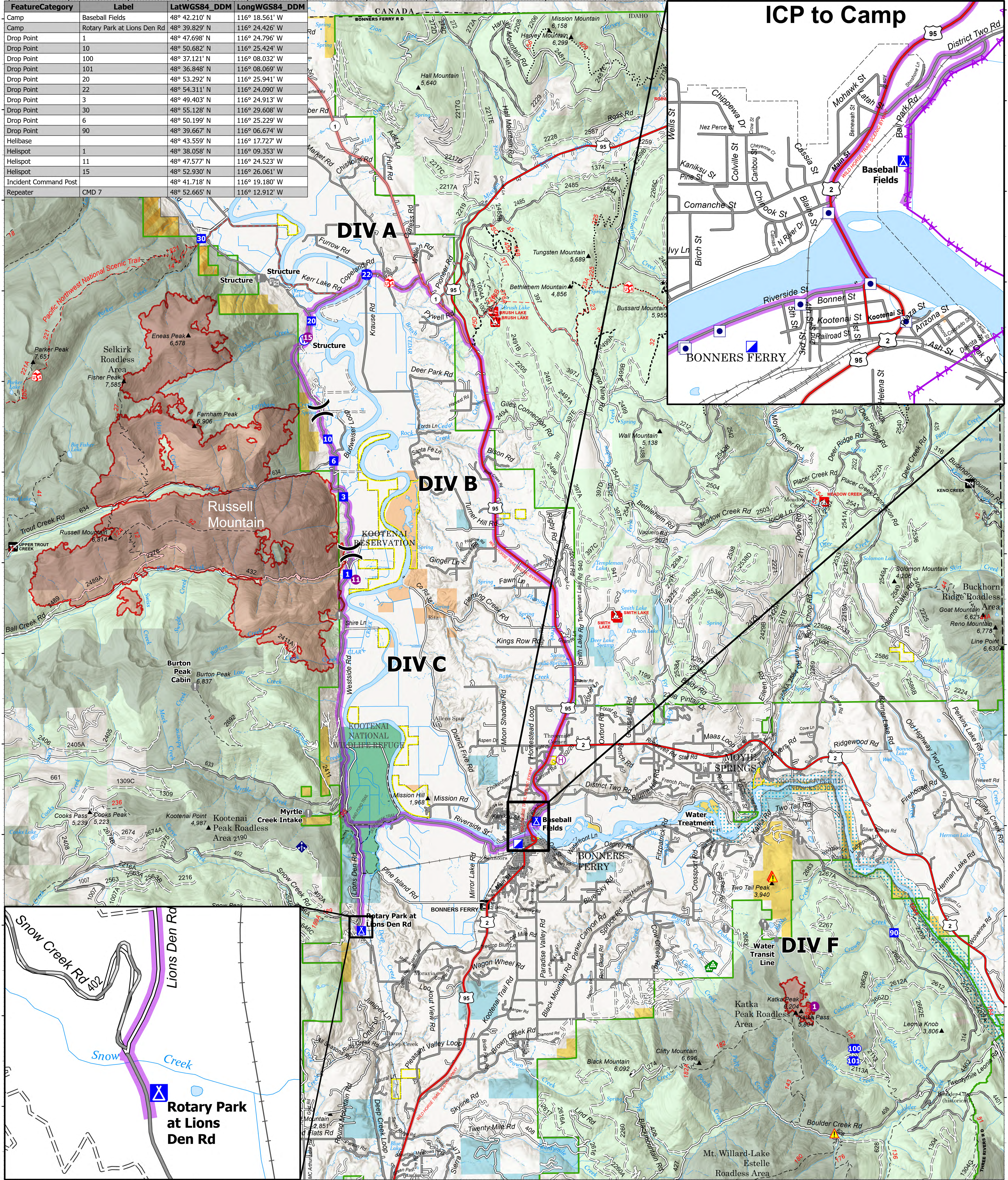


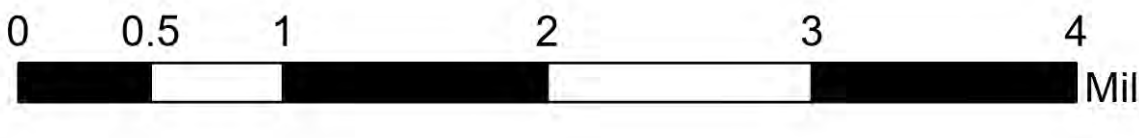
FeatureCategory	Label	LatWGS84_DDM	LongWGS84_DDM
Camp	Baseball Fields	48° 42.210' N	116° 18.561' W
Camp	Rotary Park at Lions Den Rd	48° 39.829' N	116° 24.426' W
Drop Point	1	48° 47.698' N	116° 24.796' W
Drop Point	10	48° 50.682' N	116° 25.424' W
Drop Point	100	48° 37.121' N	116° 08.032' W
Drop Point	101	48° 36.848' N	116° 08.069' W
Drop Point	20	48° 53.292' N	116° 25.941' W
Drop Point	22	48° 54.311' N	116° 24.090' W
Drop Point	3	48° 49.403' N	116° 24.913' W
Drop Point	30	48° 55.128' N	116° 29.608' W
Drop Point	6	48° 50.199' N	116° 25.229' W
Drop Point	90	48° 39.667' N	116° 06.674' W
Helibase		48° 43.559' N	116° 17.727' W
Helispot	1	48° 38.058' N	116° 09.353' W
Helispot	11	48° 47.577' N	116° 24.523' W
Helispot	15	48° 52.930' N	116° 26.061' W
Incident Command Post		48° 41.718' N	116° 19.180' W
Repeater	CMD 7	48° 52.665' N	116° 12.912' W

ICP to Camp



Transportation

Kootenai River Complex
 2022-IDIPF-000653
 9/15/2022
 20,744 acres at 9/14/22 2044
 Acres from IR



- Travel Route
- Value at Risk
- Water Source
- Indian Reservation
- Helispot
- Other
- Wildfire Daily Fire Perimeter
- American Indian Lands
- Helibase
- Gate
- US Primary Route
- Forest Service Land
- Division Break
- Landing or Log Deck
- US Secondary Route
- State Public Lands
- Incident Command Post
- Mobile Weather Unit
- State Primary Route
- U.S. Fish Wildlife Service Lands
- Drop Point
- Repeater
- Paved Roads
- Bureau of Land Management Lands
- Camp
- Hazard
- Dirt (Not Paved)

N
S
E
W

9/15/2022 0520
North American 1983 Datum, LatLong Grid