

Briefing North

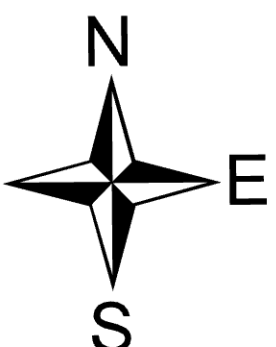
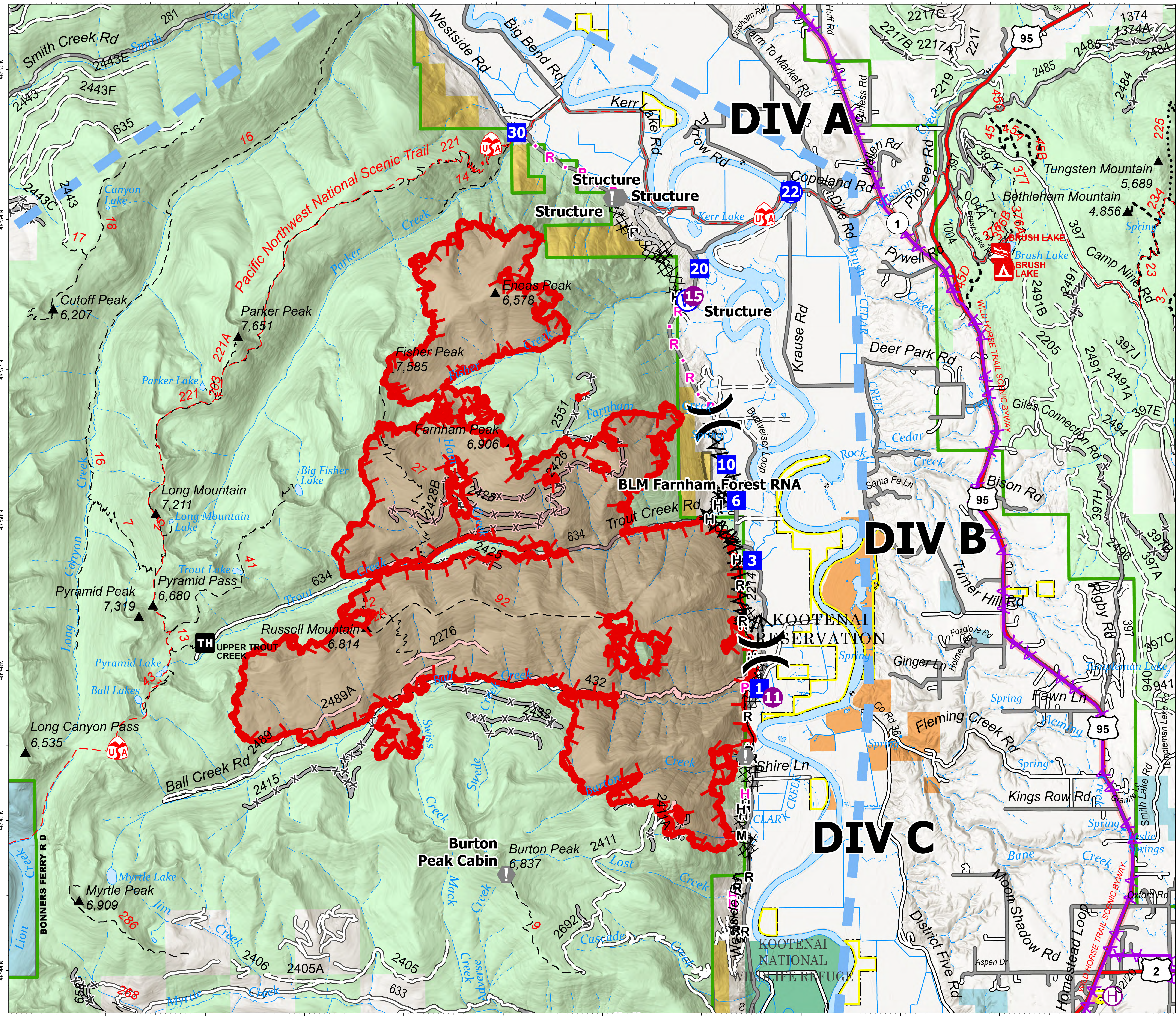
Kootenai River Complex
2022-IDIPF-000653

9/16/2022

20,821 acres at 9/15/22 2014
Acres from IR



- Helispot
- ⊕ Helibase
- ⌋ Division Break
- Drop Point
- ⚠ Value at Risk
- ⊙ Water Source
- ⊗ Completed Dozer Line
- ⊗ Completed Fuel Break
- ⊗ Completed Hand Line
- ⊗ Completed Mixed Construction Line
- ⊗ Completed Road as Line
- ⊗ Planned Hand Line
- ⊗ Planned Plow Line
- ⊗ Planned Road as Line
- Access or Improved Road
- Aerial Hazard
- Temporary Flight Restriction
- Other
- ▭ Wildfire Daily Fire Perimeter
- US Primary Route
- State Primary Route
- Paved Roads
- Dirt (Not Paved)
- American Indian Lands
- Forest Service Land
- State Public Lands
- U.S. Fish Wildlife Service Lands
- Bureau of Land Management Lands
- Indian Reservation

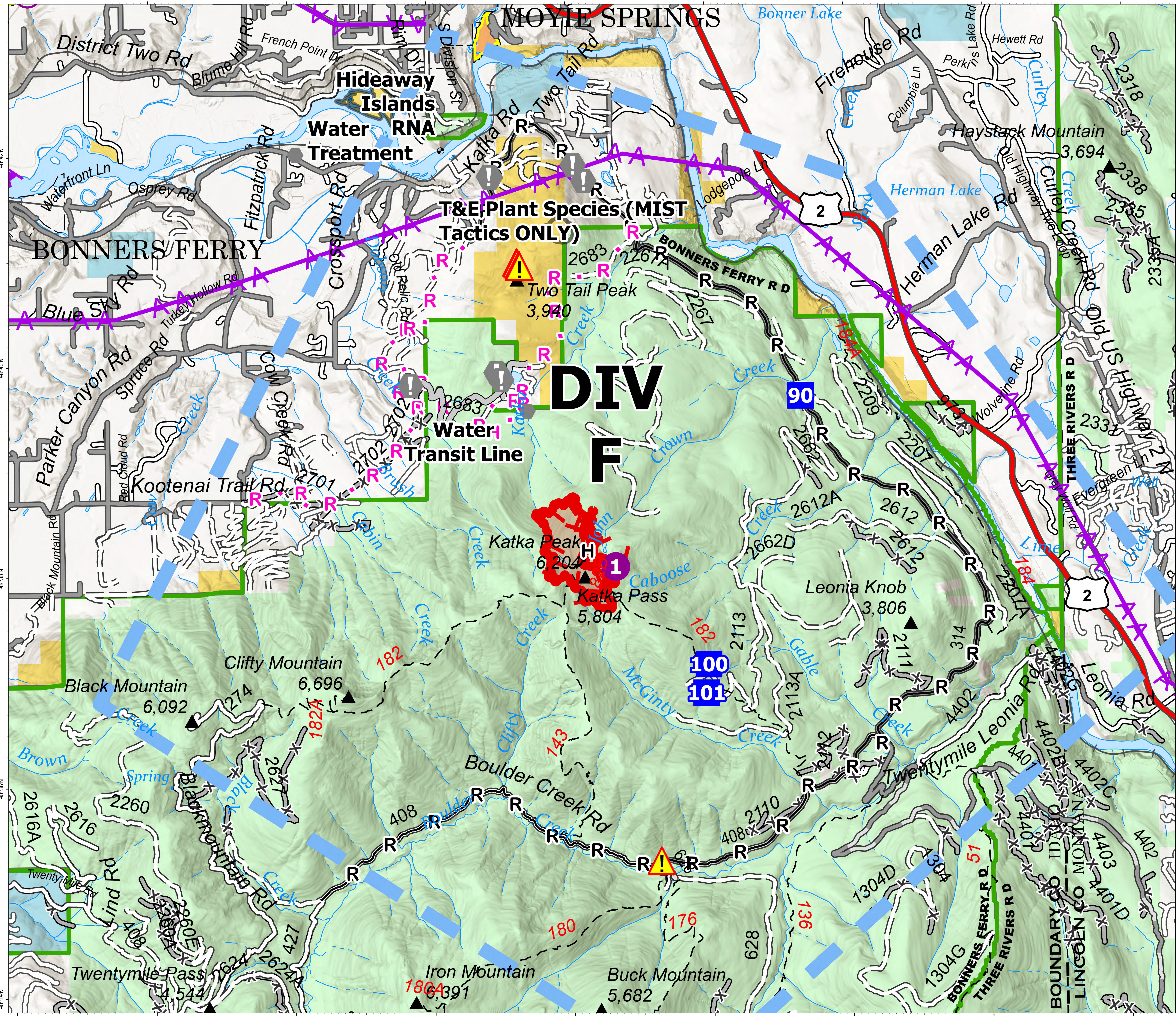


NR Team 4
9/16/2022 0537
North American 1983 Datum, Lat/Long Grid

Briefing South

Kootenai River Complex
2022-IDIPF-000653
9/16/2022
20,821 acres at 9/15/22 2014
Acres from IR

- 0 0.5 1 Miles
- Helispot
- ⊕ Helibase
- Drop Point
- ▲ Camp
- ⚠ Value at Risk
- ⚠ Other
- ⚠ Hazard
- H- Completed Hand Line
- R- Completed Road as Line
- H- Planned Hand Line
- R- Planned Road as Line
- Access or Improved Road
- - Aerial Hazard
- ▭ Temporary Flight Restriction
- ▭ Other
- ▭ Wildfire Daily Fire Perimeter
- ▭ US Primary Route
- ▭ Paved Roads
- ▭ Dirt (Not Paved)
- ▭ American Indian Lands
- ▭ Forest Service Land
- ▭ State Public Lands
- ▭ Bureau of Land Management Lands
- ▭ Indian Reservation



NR Team 4
9/16/2022 0539
North American 1983 Datum, Lat/Long Grid