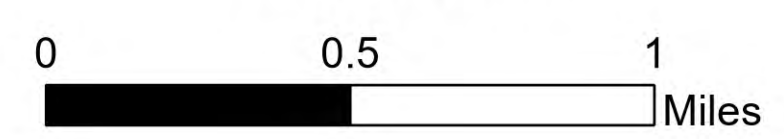


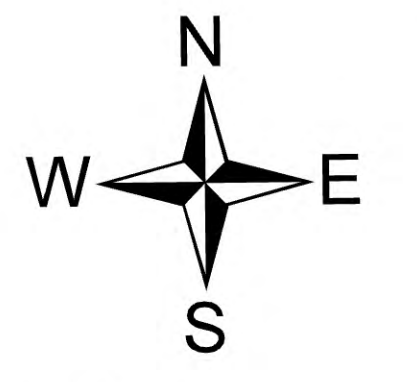
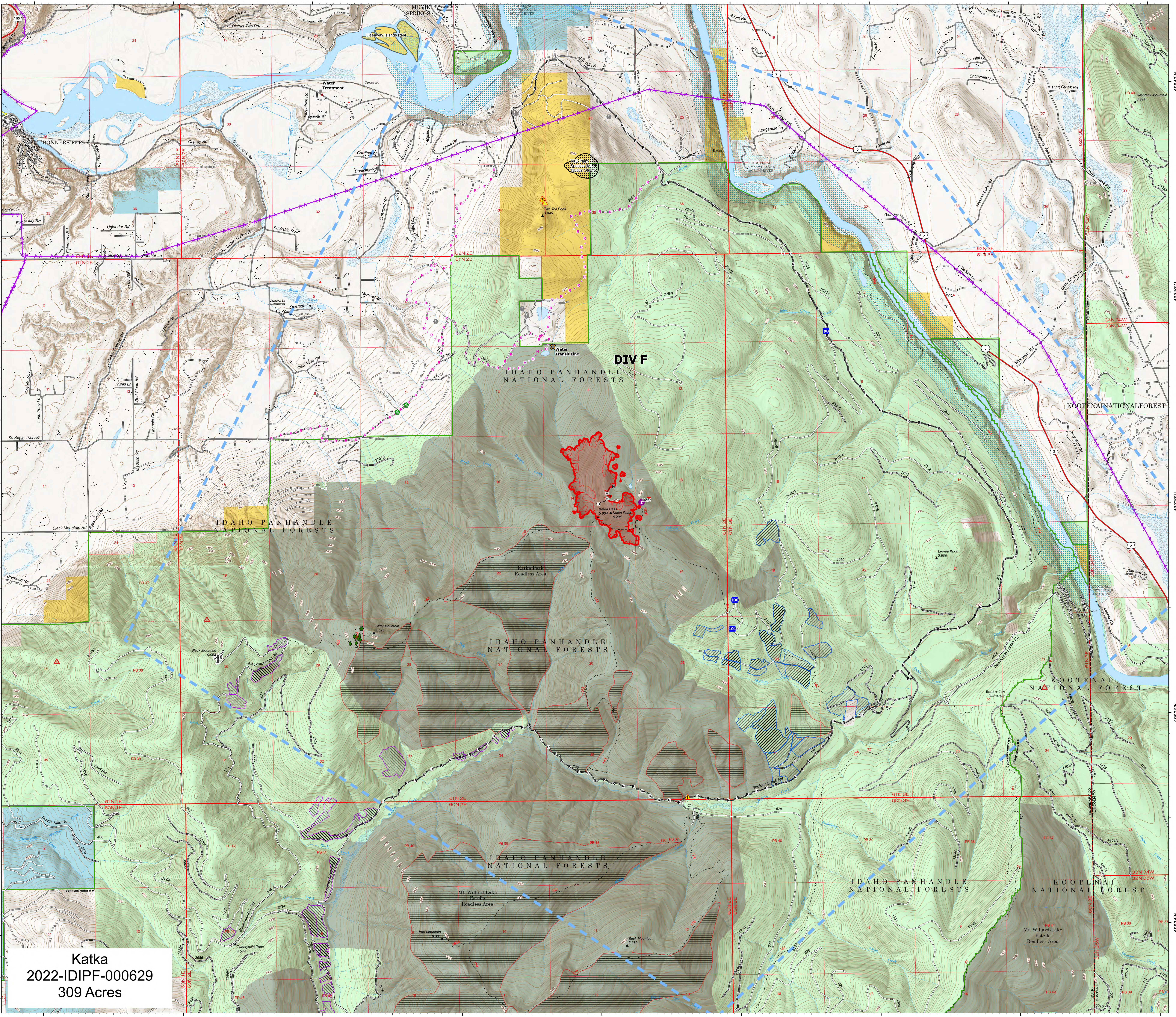
# Operations South

## Kootenai River Complex

2022-IDIPF-000653  
9/16/2022  
20,821 acres at 9/15/22 2014  
Acres from IR



- Helispot
- Drop Point
- Camp
- Value at Risk
- Other
- Landing or Log Deck
- Hazard
- Completed Hand Line
- Completed Road as Line
- Planned Hand Line
- Planned Road as Line
- Access or Improved Road
- Aerial Hazard
- Temporary Flight Restriction
- Other
- Wildfire Daily Fire Perimeter
- IR Heat Perimeter
- IR Intense Heat
- IR Scattered Heat
- US Primary Route
- Paved Roads
- Dirt (Not Paved)
- Indian Reservation
- American Indian Lands
- Forest Service Land
- State Public Lands
- Bureau of Land Management Lands
- Idaho Structures
- County Communications Site
- Water Trans Line
- Black Boulder GNA Timber Sale
- Boulder Dash Timber Sale
- Boulder Rx Burns
- T&E plant habitat
- WBP



**Katka**  
2022-IDIPF-000629  
309 Acres