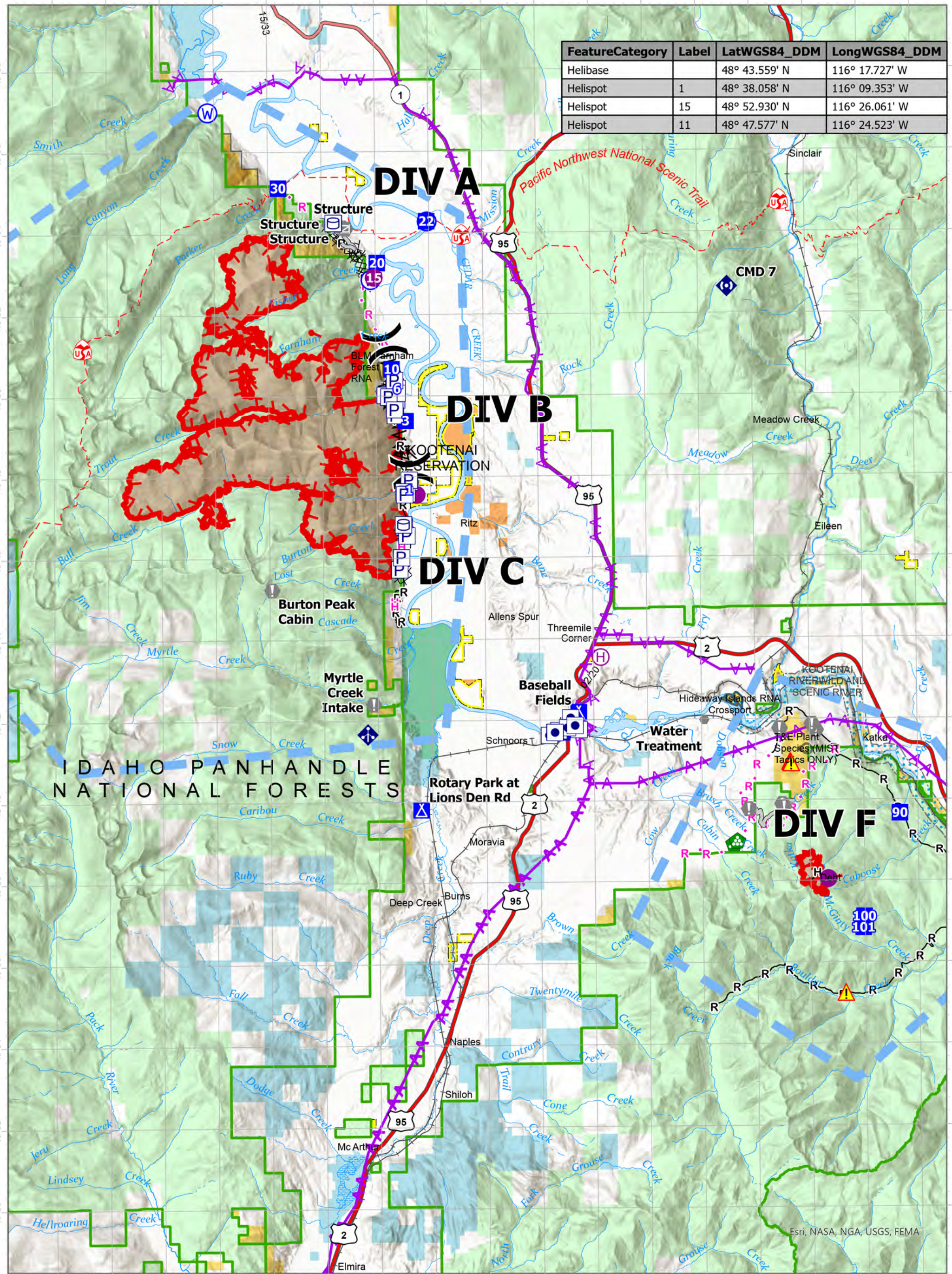


FeatureCategory	Label	LatWGS84_DDM	LongWGS84_DDM
Helibase		48° 43.559' N	116° 17.727' W
Helispot	1	48° 38.058' N	116° 09.353' W
Helispot	15	48° 52.930' N	116° 26.061' W
Helispot	11	48° 47.577' N	116° 24.523' W



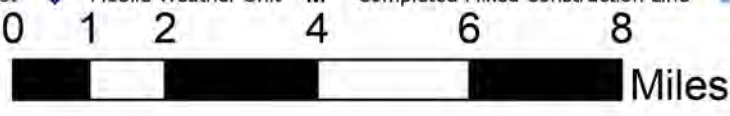
### Air Ops

**Kootenai River Complex**  
 2022-IDIPF-000653  
 9/16/2022

20,821 acres at 9/15/22 2014

Acres from IR Acres from IR Acres from IR Acres

- Other Property
- Drop Point
- ◆ Repeater
- R- Completed Road as Line
- P Pump
- ▲ Camp
- ▲ Hazard
- H Planned Hand Line
- ☒ Water Tank
- ⚠ Value at Risk
- ⊕ Water Source
- P Planned Plow Line
- Helispot
- Other
- ⊗ Completed Dozer Line
- R Planned Road as Line
- ⊕ Helibase
- ⊕ Gate
- ^ Completed Fuel Break
- = Access or Improved Road
- X Division Break
- 🏠 Landing or Log Deck
- H Completed Hand Line
- Aerial Hazard
- 🚚 Incident Command Post
- 📶 Mobile Weather Unit
- M Completed Mixed Construction Line
- Temporary Flight Restriction



NR Team 4  
 9/16/2022 0540  
 North American 1983 Datum, Lat/Long Grid