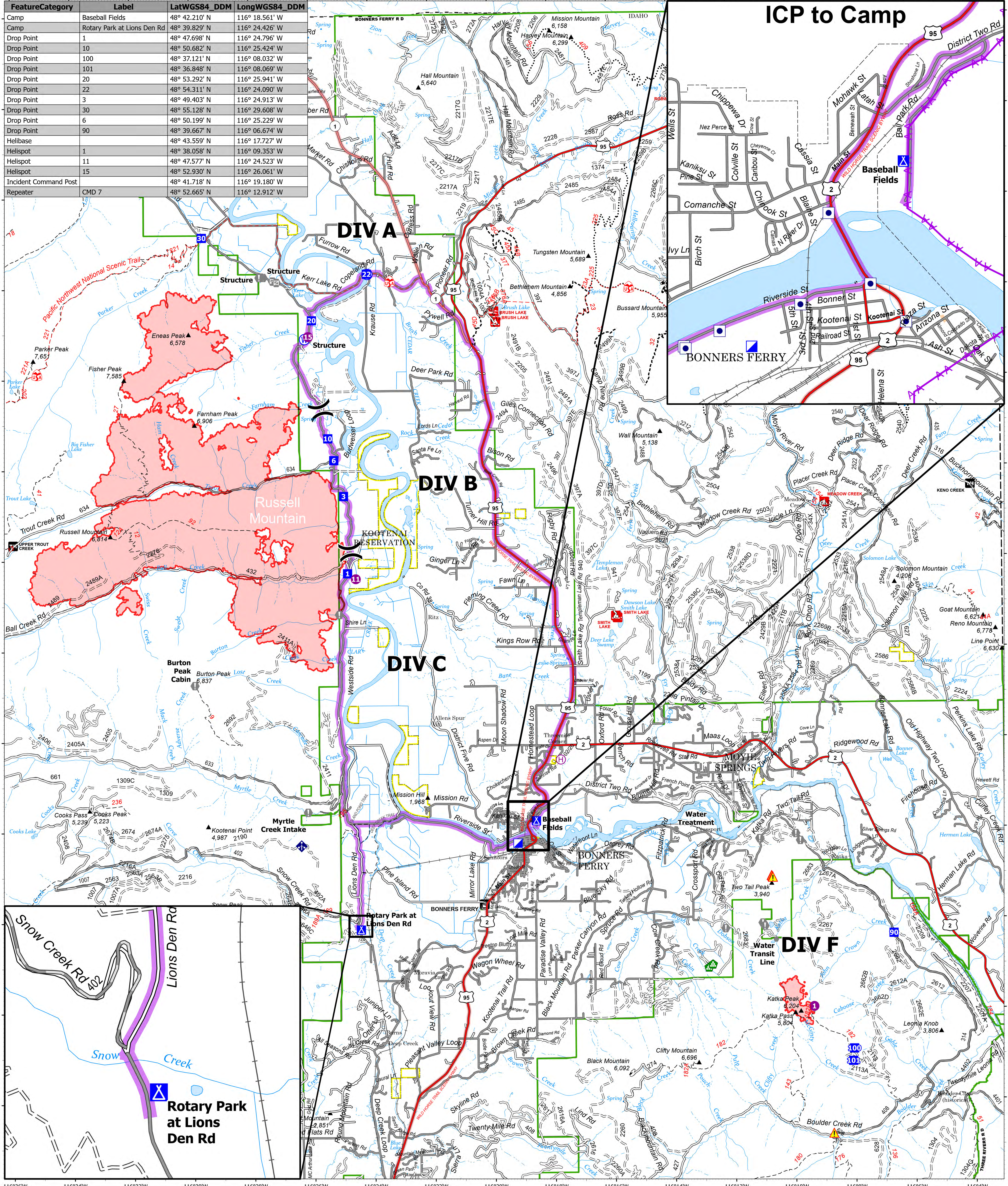


FeatureCategory	Label	LatWGS84_DDM	LongWGS84_DDM
Camp	Baseball Fields	48° 42.210' N	116° 18.561' W
Camp	Rotary Park at Lions Den Rd	48° 39.829' N	116° 24.426' W
Drop Point	1	48° 47.698' N	116° 24.796' W
Drop Point	10	48° 50.682' N	116° 25.424' W
Drop Point	100	48° 37.121' N	116° 08.032' W
Drop Point	101	48° 36.848' N	116° 08.069' W
Drop Point	20	48° 53.292' N	116° 25.941' W
Drop Point	22	48° 54.311' N	116° 24.090' W
Drop Point	3	48° 49.403' N	116° 24.913' W
Drop Point	30	48° 55.128' N	116° 29.608' W
Drop Point	6	48° 50.199' N	116° 25.229' W
Drop Point	90	48° 39.667' N	116° 06.674' W
Helibase		48° 43.559' N	116° 17.727' W
Helispot	1	48° 38.058' N	116° 09.353' W
Helispot	11	48° 47.577' N	116° 24.523' W
Helispot	15	48° 52.930' N	116° 26.061' W
Incident Command Post		48° 41.718' N	116° 19.180' W
Repeater	CMD 7	48° 52.665' N	116° 12.912' W

ICP to Camp



Transportation
 Kootenai River Complex
 2022-IDIPF-000653
 9/16/2022
 20,821 acres at 9/15/22 2014
 Acres from IR

- Travel Route
- Helispot
- (H) Helibase
-) Division Break
- ▢ Incident Command Post
- Drop Point
- ⊗ Camp
- ⬮ Value at Risk
- ⬮ Other
- ⬮ Gate
- ⬮ Landing or Log Deck
- ⬮ Mobile Weather Unit
- ⚠ Hazard
- (W) Water Source
- ▢ Wildfire Daily Fire Perimeter
- US Primary Route
- US Secondary Route
- State Primary Route
- Paved Roads
- Dirt (Not Paved)
- ▢ Indian Reservation







9/16/2022 0527
North American 1983 Datum, LatLong Grid

