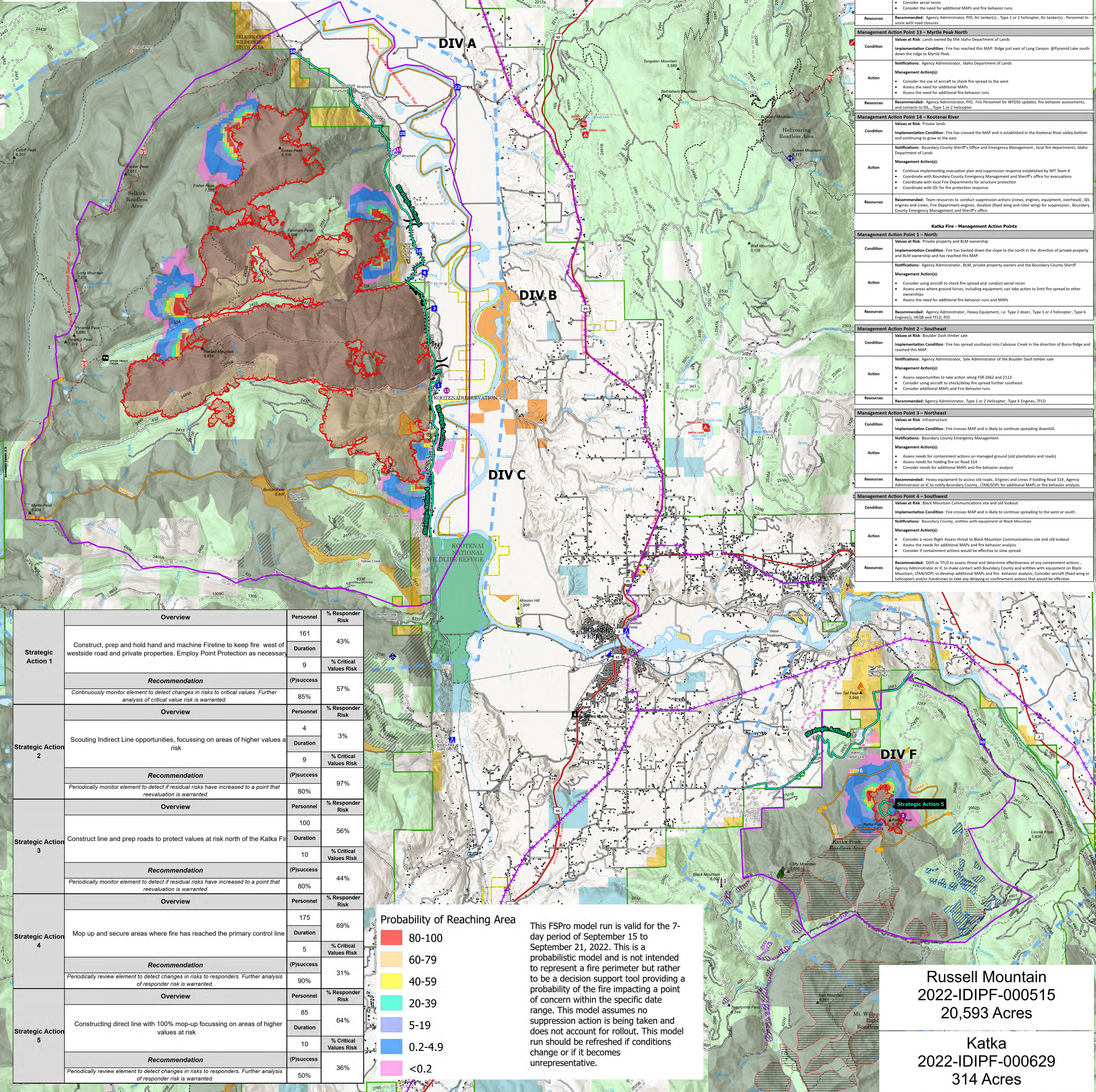


**Objectives:**

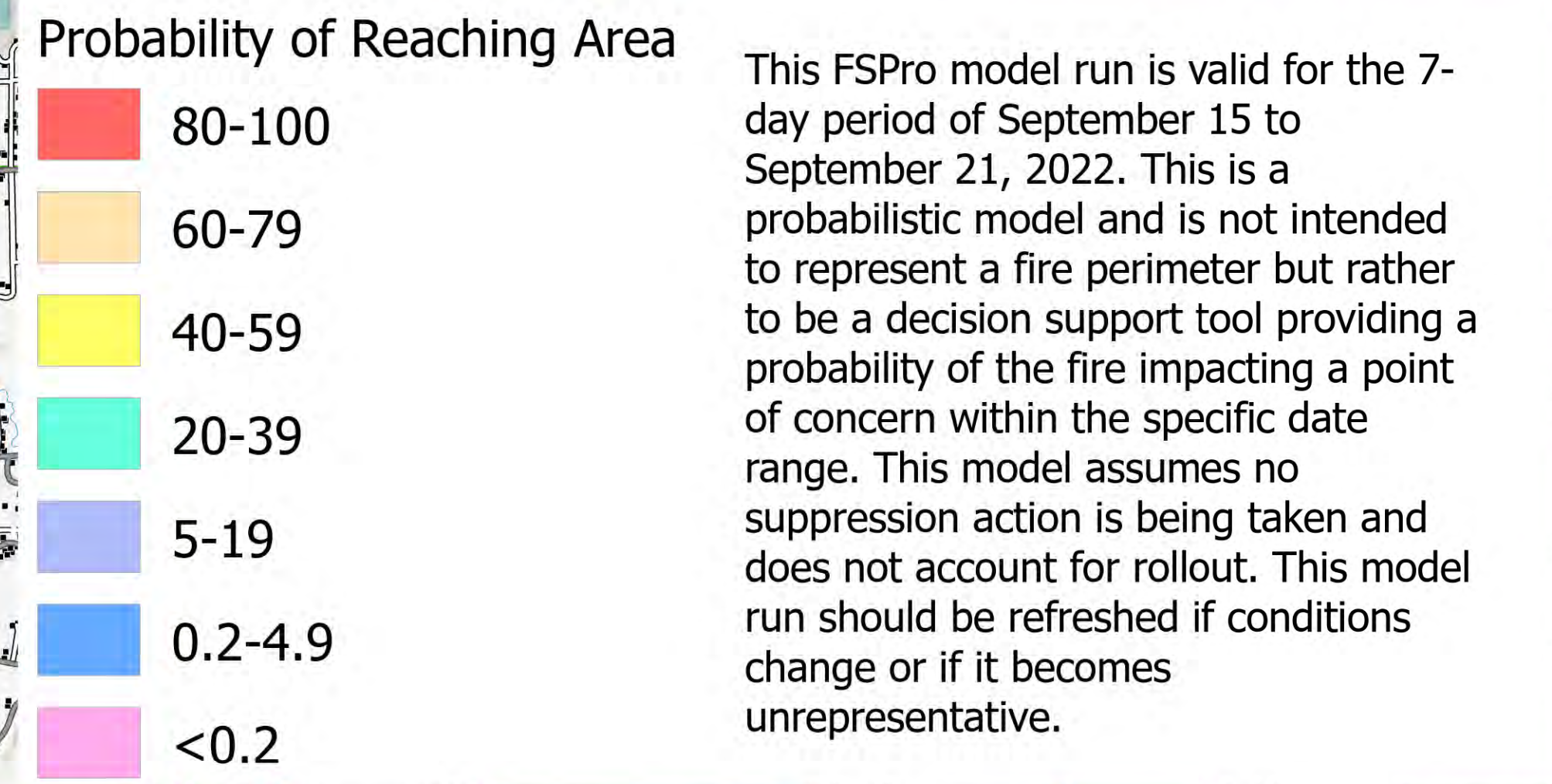
- Protection of human life is the highest priority. Use a deliberative risk management process that mitigates risk to the public and firefighting resources while implementing a course of action where there is a high probability of success.
- For Russell Mountain: Keep fire west of Westside Road; north of Cascade Ridge; north of Myrtle Creek drainage and the ridge running from Burton Peak to Myrtle Peak; south and east of Long Canyon.
- For Katka: Keep the fire east and northeast of Clifty Mountain; north of Caboose Creek and Burro Ridge; south of BLM and private lands in Sections 2 and 3 T 61N, 2E
- Protect communities and infrastructure within and near the planning area from negative impacts by fire and mitigate smoke impacts when possible.
- Build and maintain a high degree trust with our partners, cooperators, stakeholders, and forest visitors by providing accurate, timely, and well distributed information.
- Minimize fire and suppression impacts to timber values on private industrial timber lands, Idaho Endowment Trust and National Forest System lands.
- Minimize fire and suppression impacts to BLM parcels.
- Minimize potential fire impacts to critical community infrastructure including; Myrtle Creek Watershed, Cabinet Mountain Water District, and Northern Lights power distribution lines in the area.

- Prioritized Values at Risk**
- Private lands/residences and infrastructure adjacent to Westside Road
  - Private industrial timber lands
  - Myrtle Creek Watershed
  - Idaho Endowment Trust lands (Priest Lake)
  - Kootenai NWR
  - BLM lands, particularly Selkirk Crest Wilderness Study Area and Farnham Forest RNA
  - Idaho Endowment Trust lands (Pend Oreille Lake)
  - Westside Restoration Projects timber sale units
  - Trails and other critical infrastructure
  - IPNF MA 6 General Forest



Russell Mountain Fire - Management Action Points	
<b>Management Action Point 11 - Lost Creek</b>	<p><b>Condition:</b> Values at Risk: Private lands, BLM lands, the Kootenai National Wildlife Refuge.</p> <p><b>Implementation Condition:</b> Fire has reached this MAP at Lost Creek and is threatening to spread onto the north aspect south of the creek.</p> <p><b>Notifications:</b> Agency Administrator, private land owners, BLM, Kootenai National Wildlife Refuge, Boundary County Sheriff's Office and Emergency Management.</p> <p><b>Management Action(s):</b></p> <ul style="list-style-type: none"> <li>Consider use of retardant on Cascade Ridge and/or other aircraft delivering water to slow the progression of fire further south.</li> <li>Consider closing the Myrtle Creek road (#633), Burton Creek road (#241) and Casca de Ridge road (#2052).</li> <li>Consider wrapping the cabin on Burton Peak.</li> <li>Assess the need for additional MAPs and fire behavior assessments.</li> </ul> <p><b>Resources:</b> Recommended: Agency Administrator, PIO, Heavy equipment/HEOB, Task force engines/TFLD, Type 1 or 2 helicopter, Air tanker(s)</p>
<b>Management Action Point 12 - Burton Peak/Myrtle Peak</b>	<p><b>Condition:</b> Values at Risk: City of Bonners Ferry municipal watershed and private land owners in Myrtle Creek</p> <p><b>Implementation Condition:</b> Fire has reached the ridge between Burton Peak and Myrtle Peak just north of the Myrtle Creek drainage.</p> <p><b>Notifications:</b> Agency Administrator, the City of Bonners Ferry and Emergency Management, and private land owners in Myrtle Creek depending on where fire approaches the MA P.</p> <p><b>Management Action(s):</b></p> <ul style="list-style-type: none"> <li>Consider utilizing retardant or aircraft to deliver water along the ridge between Burton Peak and Myrtle Peak to check fire spread into the Myrtle Creek drainage (municipal water supply for the City of Bonners Ferry).</li> <li>Assess the need to close the Myrtle Creek Road (#633).</li> <li>Consider aerial recon</li> <li>Consider the need for additional MAPs and fire behavior runs.</li> </ul> <p><b>Resources:</b> Recommended: Agency Administrator, PIO, Air tanker(s), Type 1 or 2 helicopter, Air tanker(s), Personnel to assist with road closures.</p>
<b>Management Action Point 13 - Myrtle Peak North</b>	<p><b>Condition:</b> Values at Risk: Lands owned by the Idaho Department of Lands</p> <p><b>Implementation Condition:</b> Fire has reached this MAP: Ridge just east of Long Canyon @Pyramid Lake south down the ridge to Myrtle Peak.</p> <p><b>Notifications:</b> Agency Administrator, Idaho Department of Lands</p> <p><b>Management Action(s):</b></p> <ul style="list-style-type: none"> <li>Consider the use of aircraft to check fire spread to the west</li> <li>Assess the need for additional MAPs</li> <li>Assess the need for additional fire behavior runs</li> </ul> <p><b>Resources:</b> Recommended: Agency Administrator, PIO, Fire Personnel for WFOSS updates, fire behavior assessments, and conduct a TFLD, Type 1 or 2 helicopter</p>
<b>Management Action Point 14 - Kootenai River</b>	<p><b>Condition:</b> Values at Risk: Private lands</p> <p><b>Implementation Condition:</b> Fire has crossed the MAP and is established in the Kootenai River valley bottom and continuing to grow to the east.</p> <p><b>Notifications:</b> Boundary County Sheriff's Office and Emergency Management, local fire departments, Idaho Department of Lands</p> <p><b>Management Action(s):</b></p> <ul style="list-style-type: none"> <li>Continue implementing evacuation plan and suppression response established by IMT Team 4</li> <li>Coordinate with Boundary County Emergency Management and Sheriff's office for evacuations</li> <li>Coordinate with local Fire Departments for structure protection</li> <li>Coordinate with IDL for fire protection response</li> </ul> <p><b>Resources:</b> Recommended: Team resources to conduct suppression actions (crews, engines, equipment, overhead), IDL engines and crews, Fire Department engines, Aviation (fixed wing and rotor wing) for suppression, Boundary County Emergency Management and Sheriff's office</p>
<b>Katka Fire - Management Action Points</b>	
<b>Management Action Point 1 - North</b>	<p><b>Condition:</b> Values at Risk: Private property and BLM ownership</p> <p><b>Implementation Condition:</b> Fire has backed down the slope to the north in the direction of private property and BLM ownership and has reached this MAP.</p> <p><b>Notifications:</b> Agency Administrator, BLM, private property owners and the Boundary County Sheriff</p> <p><b>Management Action(s):</b></p> <ul style="list-style-type: none"> <li>Consider using aircraft to check fire spread and conduct aerial recon</li> <li>Assess areas where ground forces, including equipment, can take action to limit fire spread to other ownerships</li> <li>Assess the need for additional fire behavior runs and MAPs</li> </ul> <p><b>Resources:</b> Recommended: Agency Administrator, Heavy Equipment, 1x Type 2 dozer, Type 1 or 2 helicopter, Type 6 Engines, HEOB and TFLD, PID</p>
<b>Management Action Point 2 - Southeast</b>	<p><b>Condition:</b> Values at Risk: Boulder Dash timber sale</p> <p><b>Implementation Condition:</b> Fire has spread southeast into Caboose Creek in the direction of Burro Ridge and reached this MAP.</p> <p><b>Notifications:</b> Agency Administrator, Sale Administrator of the Boulder Dash timber sale</p> <p><b>Management Action(s):</b></p> <ul style="list-style-type: none"> <li>Assess opportunities to take action along FSR 2662 and 2133</li> <li>Consider using aircraft to check/delay fire spread further southeast</li> <li>Consider additional MAPs and Fire Behavior runs</li> </ul> <p><b>Resources:</b> Recommended: Agency Administrator, Type 1 or 2 Helicopter, Type 6 Engines, TFLD</p>
<b>Management Action Point 3 - Northeast</b>	<p><b>Condition:</b> Values at Risk: Infrastructure</p> <p><b>Implementation Condition:</b> Fire crosses MAP and is likely to continue spreading downhill.</p> <p><b>Notifications:</b> Boundary County Emergency Management</p> <p><b>Management Action(s):</b></p> <ul style="list-style-type: none"> <li>Assess needs for containment actions on managed ground (old plantations and roads)</li> <li>Assess needs for holding fire on Road 314</li> <li>Consider needs for additional MAPs and fire behavior analysis</li> </ul> <p><b>Resources:</b> Recommended: Heavy equipment to access old roads, Engines and crews if holding Road 314, Agency Administrator or IC to notify Boundary County, LTAN/SOPL for additional MAPs or fire behavior analysis</p>
<b>Management Action Point 4 - Southwest</b>	<p><b>Condition:</b> Values at Risk: Black Mountain Communications site and old lookout</p> <p><b>Implementation Condition:</b> Fire crosses MAP and is likely to continue spreading to the west or south.</p> <p><b>Notifications:</b> Boundary County, entities with equipment at Black Mountain</p> <p><b>Management Action(s):</b></p> <ul style="list-style-type: none"> <li>Consider a recon flight Assess threat to Black Mountain Communications site and old lookout</li> <li>Assess the need for additional MAPs and fire behavior analysis</li> <li>Assess if containment actions would be effective to slow spread.</li> </ul> <p><b>Resources:</b> Recommended: DIVS or TFLD to assess threat and determine effectiveness of any containment actions, Agency Administrator or IC to make contact with Boundary County and entities with equipment on Black Mountain, LTAN/SOPL to develop additional MAPs and fire behavior analysis, Consider aircraft (fixed wing or helicopter) and/or handcrews to take any delaying or confinement actions that would be effective</p>

Strategic Action	Overview	Personnel	% Responder Risk
Strategic Action 1	Construct, prep and hold hand and machine Fireline to keep fire west of westside road and private properties. Employ Point Protection as necessary	161	43%
	<b>Recommendation</b>	Duration: 9	% Critical Values Risk
	Continuously monitor element to detect changes in risks to critical values. Further analysis of critical value risk is warranted.	(P)success: 85%	57%
Strategic Action 2	Scouting Indirect Line opportunities, focussing on areas of higher values at risk	4	3%
	<b>Recommendation</b>	Duration: 9	% Critical Values Risk
	Periodically monitor element to detect if residual risks have increased to a point that reevaluation is warranted.	(P)success: 80%	97%
Strategic Action 3	Construct line and prep roads to protect values at risk north of the Katka Fire	100	56%
	<b>Recommendation</b>	Duration: 10	% Critical Values Risk
	Periodically monitor element to detect if residual risks have increased to a point that reevaluation is warranted.	(P)success: 80%	44%
Strategic Action 4	Mop up and secure areas where fire has reached the primary control line	175	69%
	<b>Recommendation</b>	Duration: 5	% Critical Values Risk
	Periodically review element to detect changes in risks to responders. Further analysis of responder risk is warranted.	(P)success: 90%	31%
Strategic Action 5	Constructing direct line with 100% mop-up focussing on areas of higher values at risk	85	64%
	<b>Recommendation</b>	Duration: 10	% Critical Values Risk
	Periodically review element to detect changes in risks to responders. Further analysis of responder risk is warranted.	(P)success: 50%	36%



**Russell Mountain**  
2022-IDIPF-000515  
20,593 Acres

**Katka**  
2022-IDIPF-000629  
314 Acres

**Strategic Risk Assessment**  
Kootenai River Complex  
2022-IDIPF-000653  
09/18/2022  
20,908 acres at 9/17/2022 1946  
Acres from IR

**Legend:**

- Strategic Action
- Planning Area
- Structures
- Helispot
- Helibase
- Division Break
- Incident Command Post
- Drop Point
- Camp
- Hot Spot - Spot Fire
- Value at Risk
- Other
- Gate
- Landing or Log Deck
- Mobile Weather Unit
- Repeater
- Hazard
- Water Source
- Completed Dozer Line
- Completed Fuel Break
- Completed Hand Line
- Completed Mixed Construction Line
- Completed Road as Line
- Planned Hand Line
- Planned Plow Line
- Planned Road as Line
- Access or Improved Road
- Management Action Point
- Aerial Hazard
- Temporary Flight Restriction
- Other
- Wildfire Daily Fire Perimeter
- Indian Reservation
- American Indian Lands
- Forest Service Land
- State Public Lands
- U.S. Fish Wildlife Service Lands
- Bureau of Land Management Lands
- BLM Farnham Forest RNA
- WestsideProject\_RxBurns
- WestsideProject\_HarvestUnits
- County Communications Site
- Black Boulder GNA Timber Sale
- Boulder Dash Timber Sale
- BoulderRxBurns
- WBP

**EASTERN AREA**  
Incident management team

EA Gold IMT  
09/18/2022 0540  
North American 1983 Datum, LatLong Grid