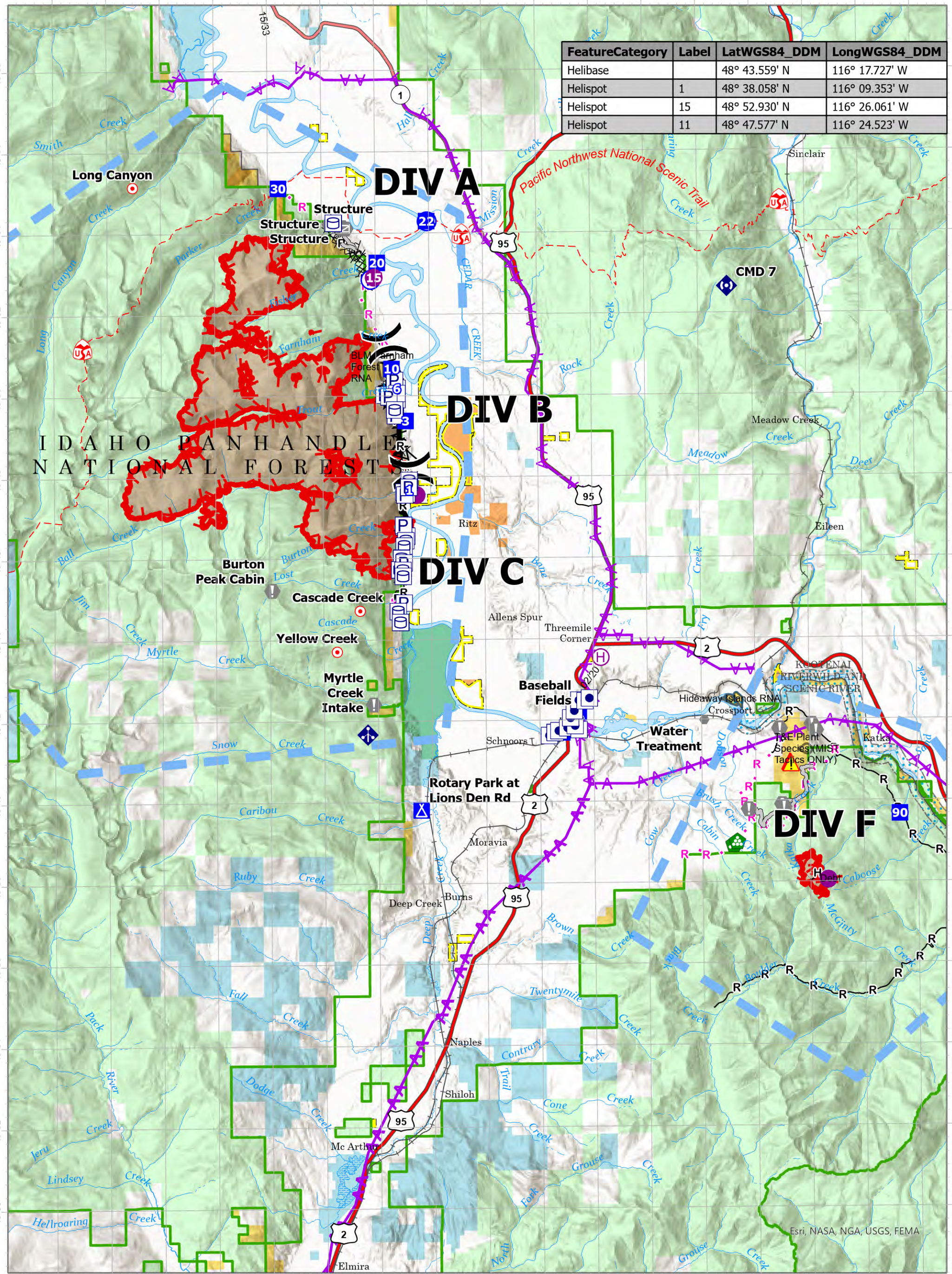


Feature	Category	Label	LatWGS84_DDM	LongWGS84_DDM
Helibase			48° 43.559' N	116° 17.727' W
Helispot		1	48° 38.058' N	116° 09.353' W
Helispot		15	48° 52.930' N	116° 26.061' W
Helispot		11	48° 47.577' N	116° 24.523' W



Air Ops

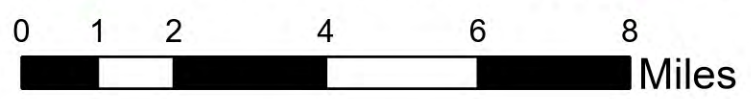
Kootenai River Complex
 2022-IDIPF-000653
 09/18/2022

20,908 acres at 9/17/2022 1946

- Other Property
- Pump
- Water Tank
- Helispot
- Helibase
- Division Break
- Incident Command Post
- Drop Point
- Camp
- Hot Spot - Spot Fire
- Value at Risk
- Other
- Gate
- Landing or Log Deck
- Mobile Weather Unit
- Repeater
- Hazard
- Water Source
- Completed Dozer Line
- Completed Fuel Break
- Completed Hand Line
- Completed Mixed Construction Line
- Completed Road as Line
- Planned Hand Line
- Planned Plow Line
- Planned Road as Line
- Access or Improved Road
- Aerial Hazard



Acres from IR Acres from IR Acres from IR Acres



EA Gold IMT
 09/18/2022 0540
 North American 1983 Datum. Lat/Long Grid