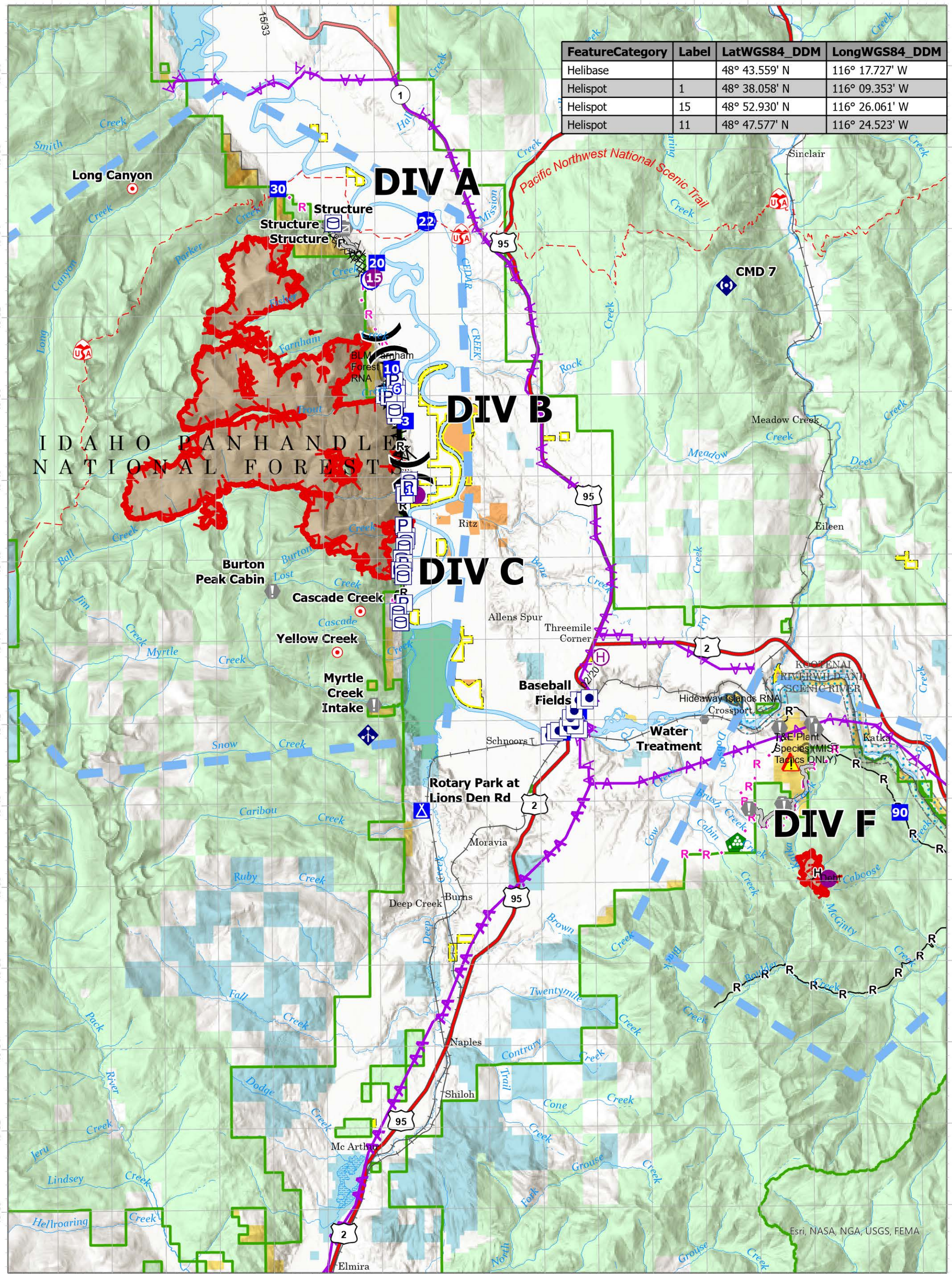


FeatureCategory	Label	LatWGS84_DDM	LongWGS84_DDM
Helibase		48° 43.559' N	116° 17.727' W
Helispot	1	48° 38.058' N	116° 09.353' W
Helispot	15	48° 52.930' N	116° 26.061' W
Helispot	11	48° 47.577' N	116° 24.523' W



## Air Ops

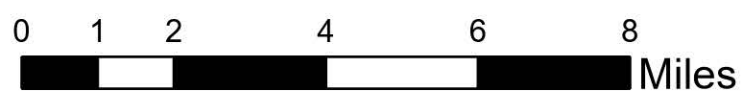
**Kootenai River Complex**  
**2022-IDIPF-000653**  
**09/18/2022**

20,908 acres at 9/17/2022 1946

- |                       |                      |                      |                                   |
|-----------------------|----------------------|----------------------|-----------------------------------|
| Other Property        | Drop Point           | Mobile Weather Unit  | Completed Mixed Construction Line |
| Pump                  | Camp                 | Repeater             | Completed Road as Line            |
| Water Tank            | Hot Spot - Spot Fire | Hazard               | Planned Hand Line                 |
| Helispot              | Value at Risk        | Water Source         | Planned Plow Line                 |
| Helibase              | Other                | Completed Dozer Line | Planned Road as Line              |
| Division Break        | Gate                 | Completed Fuel Break | Access or Improved Road           |
| Incident Command Post | Landing or Log Deck  | Completed Hand Line  | Aerial Hazard                     |



Acres from IR Acres from IR Acres from IR Acres



EA Gold IMT  
 09/18/2022 2006  
 North American 1983 Datum. Lat/Long Grid