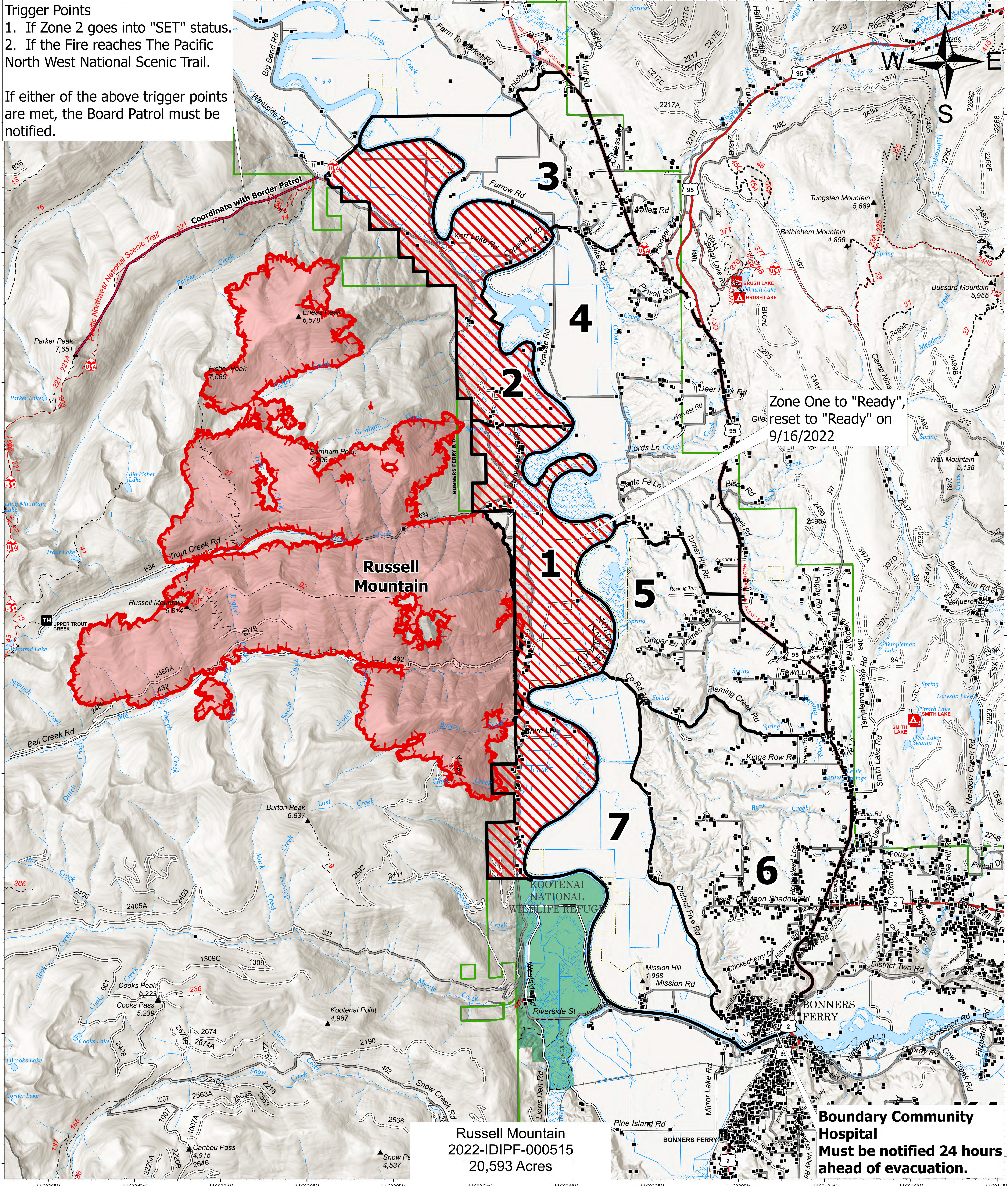


Trigger Points
 1. If Zone 2 goes into "SET" status.
 2. If the Fire reaches The Pacific North West National Scenic Trail.

If either of the above trigger points are met, the Board Patrol must be notified.



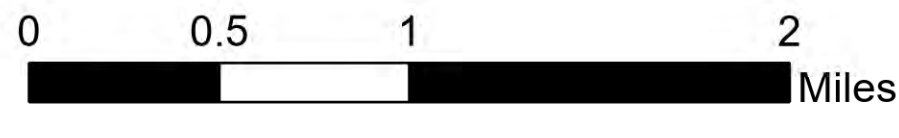
Ready, Set, Go

Kootenai River Complex
 2022-IDIPF-000653
 09/20/2022
 20,908 acres at 9/17/2022 1946
 Acres from IR

Evacuation Areas

- Ready
- Set
- Go
- Other Evacuation Areas

- Evacuation Area Structures
- Idaho Structures
- Wildfire Daily Fire Perimeter
- U.S. Fish Wildlife Service Lands



EA Gold IMT
 09/19/2022 2047
 North American 1983 Datum, Lat/Long Grid



Boundary County
 Emergency Management
 Public Information
 (208) 290-5316

Boundary County
 Sheriff's Office
 (208) 267-3151