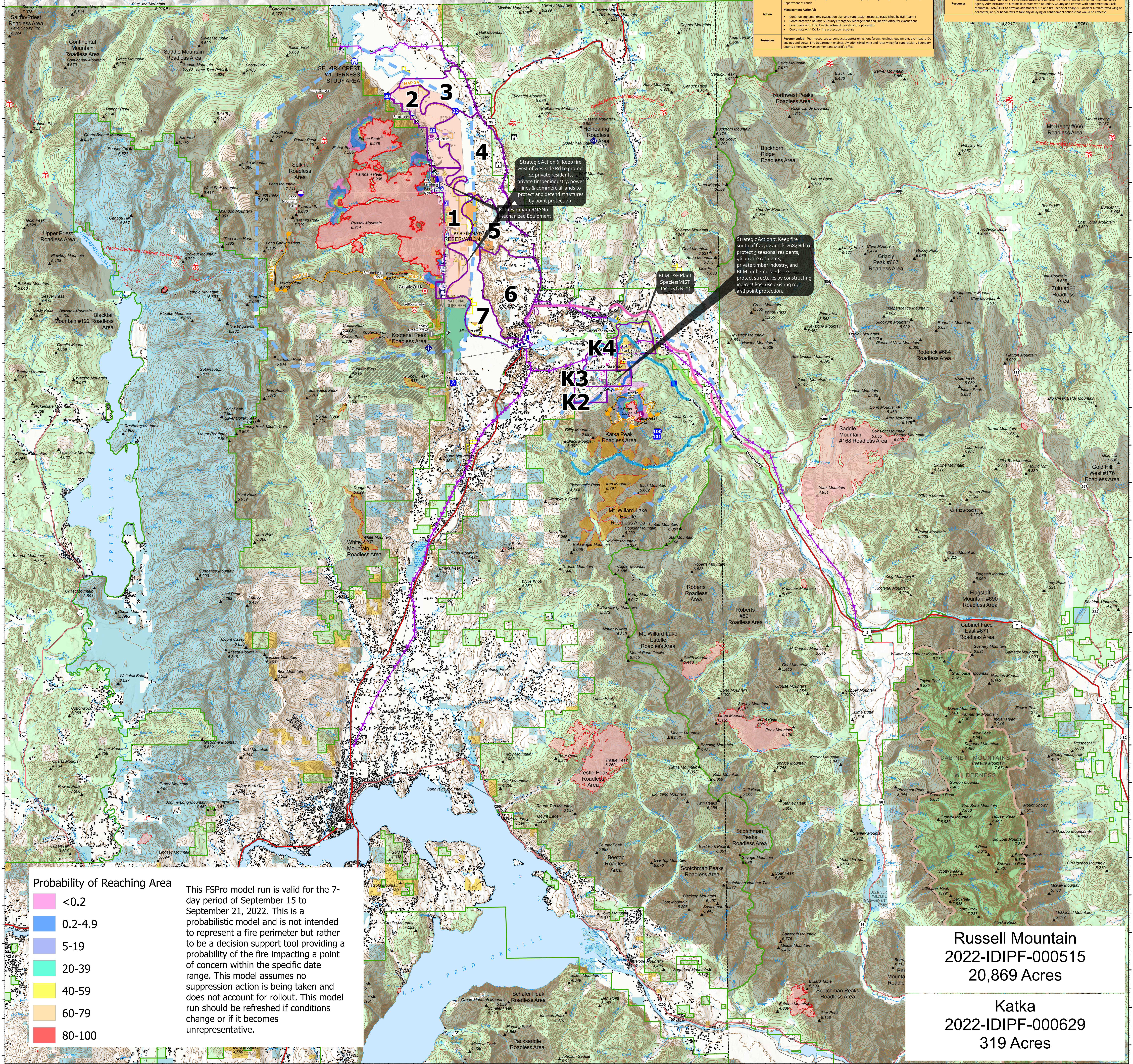


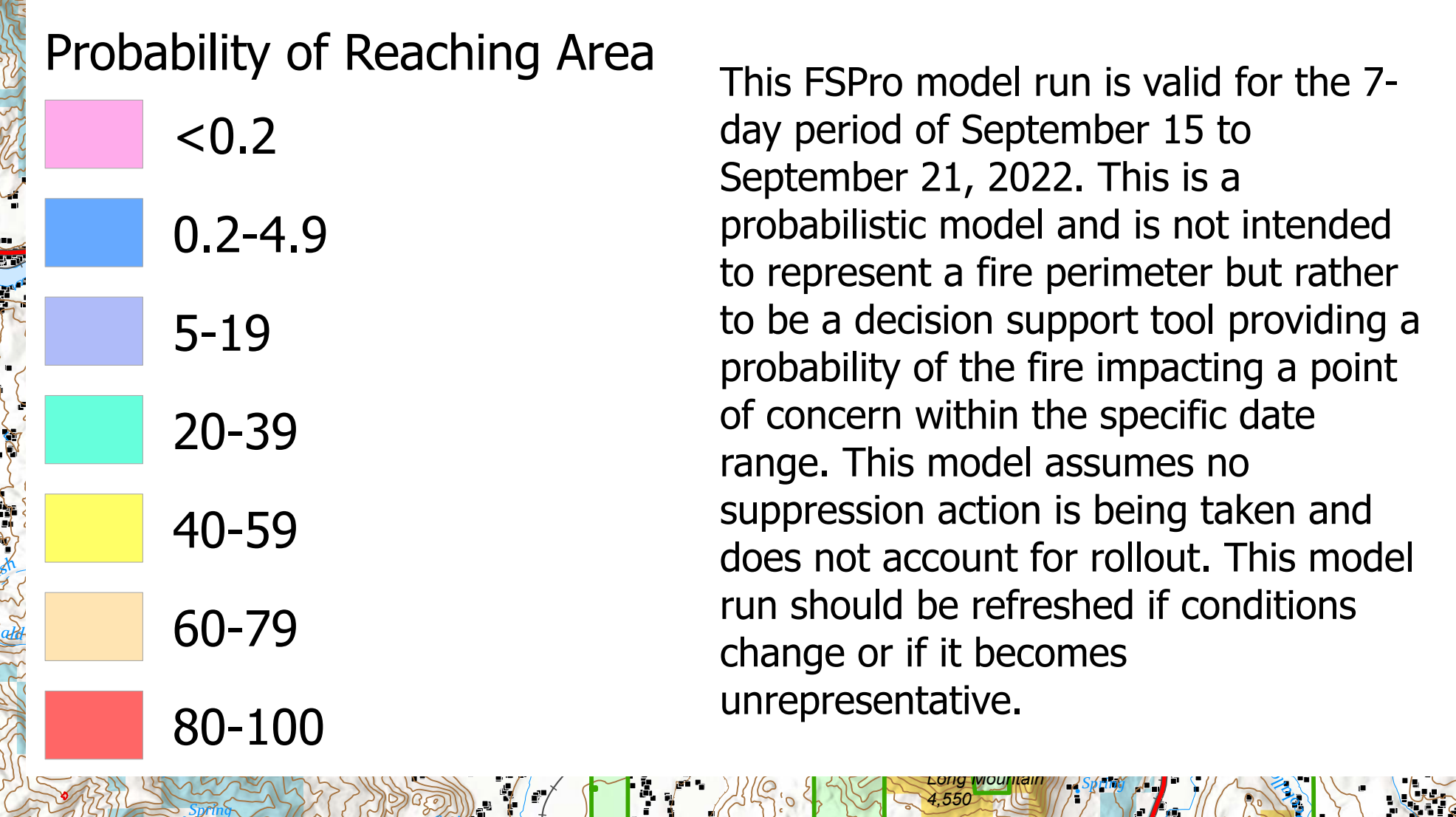
- Prioritized Values at Risk**
1. Private lands/residences and infrastructure adjacent to Westside Road
  2. Private industrial timber lands
  3. Myrtle Creek Watershed
  4. Idaho Endowment Trust lands (Priest Lake)
  5. Kootenai NWR
  6. BLM lands, particularly Selkirk Crest Wilderness Study Area and Farnham Forest RNA
  7. Idaho Endowment Trust lands (Pend Oreille Lake)
  8. Westside Restoration Projects timber sale units
  9. Trails and other critical infrastructure
  10. IPNF MA 6 General Forest

| Russell Mountain Fire - Management Action Points            |  | Katka Fire - Management Action Points        |   |
|---|--|--|---|
| <b>Management Action Point 11 - Lost Creek</b>              | <p><b>Condition:</b> Values at Risk: Private lands, BLM lands, Kootenai National Wildlife Refuge.</p> <p><b>Implementation:</b> Fire has reached this MAP. Lost Creek and is threatening to spread onto the north aspect south of the creek.</p> <p><b>Management Action(s):</b></p> <ul style="list-style-type: none"> <li>Consider fire retardant on Cascade Ridge and/or other critical detouring water to slow the progression of the further south. <li>Consider wrapping cables on Cascade Ridge road (R232), Burton Creek road (R201) and Cascade Ridge road (R282). <li>Consider wrapping cables on Burton Peak. <li>Assess the need for additional MAPs and the behavior assessments. </li></li></li></li></ul> <p><b>Resources:</b> Recommended: Agency Administrator, P25 Heavy equipment/HIGR, Tank force engine/TIG, Type 1 or 2 Helicopter, ATIS, TIG, TIG, TIG.</p>   | <b>Management Action Point 3 - North</b>     | <p><b>Condition:</b> Values at Risk: Private property and BLM ownership.</p> <p><b>Implementation:</b> Fire has backed down the slope to the north of the direction of private property and BLM ownership and has reached this MAP.</p> <p><b>Management Action(s):</b></p> <ul style="list-style-type: none"> <li>Consider using aircraft to check the spread and conduct aerial work. <li>Assess areas where ground forces, including equipment, can take action to limit the spread to other properties. <li>Assess the need for additional MAPs and the behavior assessments. </li></li></li></ul> <p><b>Resources:</b> Recommended: Agency Administrator, Heavy equipment, 1x Type 2 Helicopter, Type 1 Helicopter, ATIS, TIG, TIG, TIG.</p>   |
| <b>Management Action Point 12 - Burton Peak/Myrtle Peak</b> | <p><b>Condition:</b> Values at Risk: City of Bonners Ferry municipal watershed and private land owners in Myrtle Creek.</p> <p><b>Implementation:</b> Fire has reached the ridge between Burton Peak and Myrtle Peak just north of the Myrtle Creek drainage.</p> <p><b>Management Action(s):</b></p> <ul style="list-style-type: none"> <li>Consider offering retardant or aircraft to deliver water along the ridge between Burton Peak and Myrtle Peak to check the spread into the Myrtle Creek drainage management water supply for the City of Bonners Ferry. <li>Assess the need for additional MAPs. <li>Coordinate with local fire departments for structure protection. <li>Coordinate with local fire departments for structure protection. <li>Coordinate with local fire departments for structure protection. </li></li></li></li></li></ul> <p><b>Resources:</b> Recommended: Agency Administrator, P25 Air tanker(s), Type 1 or 2 Helicopter, Air tanker(s), Personnel to assist with road closures.</p> | <b>Management Action Point 2 - Southeast</b> | <p><b>Condition:</b> Values at Risk: Boulder Creek timber sale.</p> <p><b>Implementation:</b> Fire has spread southeast into Boulder Creek in the direction of Boulder Ridge and reached this MAP.</p> <p><b>Management Action(s):</b></p> <ul style="list-style-type: none"> <li>Assess opportunities to take action along F24 Road and 2113. <li>Consider using aircraft to check the spread further southeast. <li>Consider additional MAPs and the behavior assessments. </li></li></li></ul> <p><b>Resources:</b> Recommended: Agency Administrator, Type 1 or 2 Helicopter, Type 1 Helicopter, TIG, TIG, TIG.</p>   |
| <b>Management Action Point 13 - Myrtle Peak North</b>       | <p><b>Condition:</b> Values at Risk: Lands owned by the Idaho Department of Lands.</p> <p><b>Implementation:</b> Fire has reached this MAP. Ridge east west of Long Canyon. @Pyramid Lake south of the Myrtle Peak.</p> <p><b>Management Action(s):</b></p> <ul style="list-style-type: none"> <li>Consider the use of aircraft to check fire spread to the west. <li>Assess the need for additional MAPs. <li>Assess the need for additional MAPs. <li>Coordinate with local fire departments for structure protection. <li>Coordinate with local fire departments for structure protection. </li></li></li></li></li></ul> <p><b>Resources:</b> Recommended: Agency Administrator, P25 Air tanker(s), Type 1 or 2 Helicopter, Air tanker(s), Personnel to assist with road closures.</p>   | <b>Management Action Point 3 - Northeast</b> | <p><b>Condition:</b> Values at Risk: Private lands.</p> <p><b>Implementation:</b> Fire crosses MAP and is likely to continue spreading uphill.</p> <p><b>Management Action(s):</b></p> <ul style="list-style-type: none"> <li>Assess opportunities to take action along F24 Road and 2113. <li>Consider using aircraft to check the spread further southeast. <li>Consider additional MAPs and the behavior assessments. </li></li></li></ul> <p><b>Resources:</b> Recommended: Agency Administrator, Heavy equipment, 1x Type 2 Helicopter, Type 1 Helicopter, TIG, TIG, TIG.</p>  |
| <b>Management Action Point 14 - Kootenai River</b>          | <p><b>Condition:</b> Values at Risk: Private lands.</p> <p><b>Implementation:</b> Fire has crossed the MAP and is established in the Kootenai River valley bottom and continuing to grow to the east.</p> <p><b>Management Action(s):</b></p> <ul style="list-style-type: none"> <li>Continue improving evacuation plan and suppression response established by MFL Team 4. <li>Coordinate with Boundary County Emergency Management and Sheriff's office for evacuations. <li>Coordinate with local fire departments for structure protection. <li>Coordinate with local fire departments for structure protection. </li></li></li></li></ul> <p><b>Resources:</b> Recommended: Team resources to conduct suppression actions (crew, engine, equipment, overhaul, 4x engine and crew, the Department engine, Austin (head wing and rotor wing) suppression, Boundary County Emergency Management and Sheriff's office.</p>  | <b>Management Action Point 4 - Southwest</b> | <p><b>Condition:</b> Values at Risk: BLM National Communications site and old school.</p> <p><b>Implementation:</b> Fire crosses MAP and is likely to continue spreading in the west or south.</p> <p><b>Management Action(s):</b></p> <ul style="list-style-type: none"> <li>Consider a crew flight access threat to Black Mountain Communications site and old school. <li>Assess the need for additional MAPs and the behavior assessments. <li>Consider if containment actions would be effective to slow spread. </li></li></li></ul> <p><b>Resources:</b> Recommended: OHS or TIG to assess threat and determine effectiveness of any containment actions, Agency Administrator or IC to make contact with Boundary County and entities with equipment on Black Mountain, IDNDR to develop additional MAPs and the behavior assessments, Consider aircraft threat wing or helicopter access to take any detouring or containment actions that would be effective.</p> |



Strategic Action 6: Keep fire west of Westside Rd to protect 46 private residents, private timber industry, power lines & commercial lands to protect and defend structures by point protection.

Strategic Action 7: Keep fire south of F5 2702 and F5 2083 Rd to protect seasonal residents, 46 private residents, private timber industry, and BLM timbered lands to protect structures by constructing infrared fire line, use existing rd, and point protection.



**Russell Mountain**  
2022-IDIPF-000515  
20,869 Acres

**Katka**  
2022-IDIPF-000629  
319 Acres

**Strategic Operations Planning**

**Kootenai River Complex**  
2022-IDIPF-000653  
9/21/2022  
21,189 acres as of 9/20/2022 1911  
Acres from IR

|                         |                       |                                     |                                 |                                    |
|-------------------------|-----------------------|-------------------------------------|---------------------------------|------------------------------------|
| ■ Structures            | ⊠ Lookout             | ⚠ Hazard                            | — Access or Improved Road       | 🌲 Forest Service Land              |
| ⊠ Other Property        | ⊠ Fire Origin         | 🌊 Water Source                      | 🛣 Management Action Point       | 🏞 State Public Lands               |
| ⊠ Pump                  | ⊠ Value at Risk       | ⊠ Completed Dozer Line              | 🚀 Aerial Hazard                 | 🌳 U.S. Fish Wildlife Service Lands |
| ⊠ Water Tank            | ⊠ Other               | ⊠ Completed Fuel Break              | 🚫 Temporary Flight Restriction  | 🏡 Bureau of Land Management Lands  |
| ⊠ Dip Site              | ⊠ Gate                | ⊠ Completed Hand Line               | 🔥 Fire Edge (Field Collection)  | 🔥 BLM Farnham Forest RNA           |
| ⊠ Helispot              | ⊠ Bridge              | ⊠ Completed Mixed Construction Line | 🔥 Other                         | 🔥 Rx Burns                         |
| ⊠ Helibase              | ⊠ Landing or Log Deck | ⊠ Completed Road as Line            | 🔥 Wildfire Daily Fire Perimeter | 🔥 Timber Sales                     |
| ⊠ Division Break        | ⊠ Culvert             | ⊠ Planned Dozer Line                | 🔥 Historic Fire Perimeters      | 🔥                                  |
| ⊠ Incident Command Post | ⊠ Mobile Weather Unit | ⊠ Planned Hand Line                 | 🔥 Evacuation Areas (RSG)        | 🔥                                  |
| ⊠ Drop Point            | ⊠ Repeater            | ⊠ Planned Plow Line                 | 🔥 Indian Reservation            | 🔥                                  |
| ⊠ Camp                  | ⊠ Safety Zone         | ⊠ Planned Road as Line              | 🔥 American Indian Lands         | 🔥                                  |

**EASTERN AREA**  
incident management team

EA Gold IMT  
9/21/2022 1248  
North American 1983 Datum, LatLong Grid