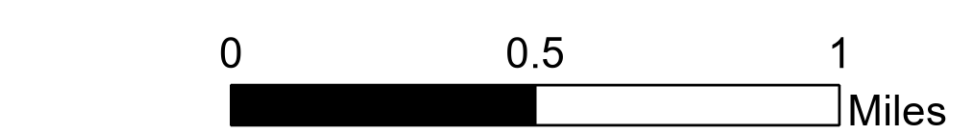
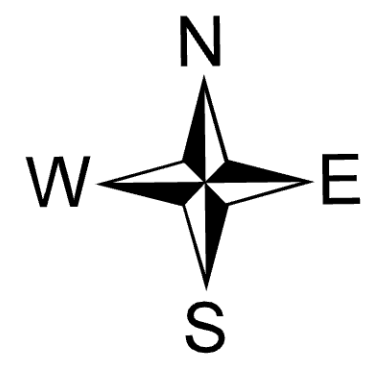
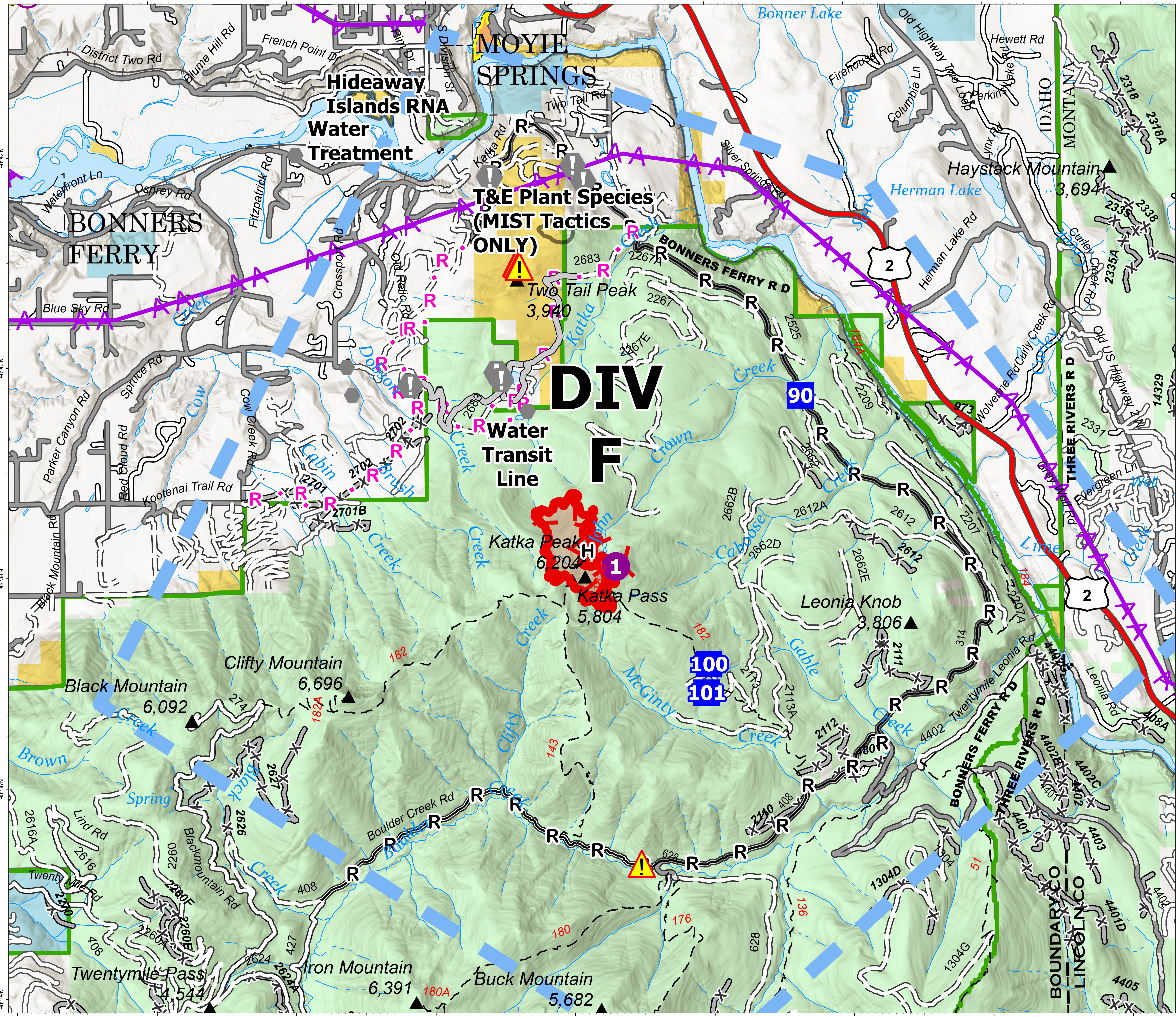


# Briefing South

Kootenai River Complex  
2022-IDIPF-000653  
09/21/2022  
20,908 acres at 9/17/2022 1946  
Acres from IR



- Helispot
- ⊕ Helibase
- Drop Point
- ▲ Camp
- ⚠ Value at Risk
- ⚠ Other
- ⚠ Hazard
- H- Completed Hand Line
- R- Completed Road as Line
- H- Planned Hand Line
- R- Planned Road as Line
- Access or Improved Road
- - Aerial Hazard
- ▭ Temporary Flight Restriction
- ▭ Other
- ▭ Wildfire Daily Fire Perimeter
- ▭ US Primary Route
- ▭ Paved Roads
- ▭ Dirt (Not Paved)
- ▭ American Indian Lands
- ▭ Forest Service Land
- ▭ State Public Lands
- ▭ Bureau of Land Management Lands
- ▭ Indian Reservation



EA Gold IMT  
09/21/2022 0532  
North American 1983 Datum, Lat/Long Grid