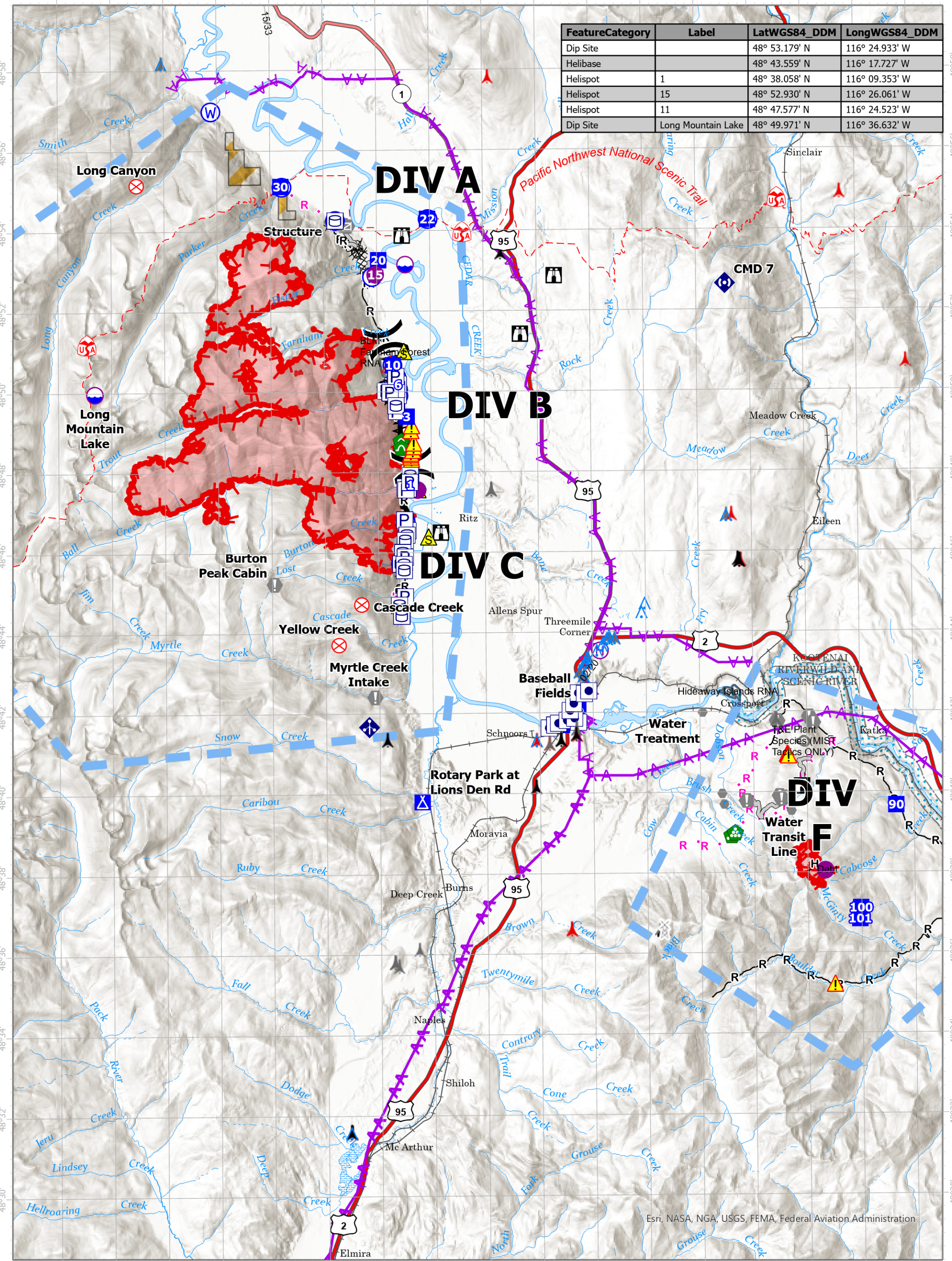


FeatureCategory	Label	LatWGS84_DDM	LongWGS84_DDM
Dip Site		48° 53.179' N	116° 24.933' W
Helibase		48° 43.559' N	116° 17.727' W
Helispot	1	48° 38.058' N	116° 09.353' W
Helispot	15	48° 52.930' N	116° 26.061' W
Helispot	11	48° 47.577' N	116° 24.523' W
Dip Site	Long Mountain Lake	48° 49.971' N	116° 36.632' W



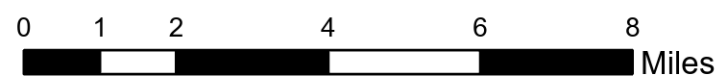
## Air Ops

Kootenai River Complex  
2022-IDIPF-000653

09/21/2022

20,908 acres at 9/17/2022 1946  
Acres from IR

- Other Property
- Incident Command Post
- Gate
- Hazard
- Planned Dozer Line
- Pump
- Drop Point
- Bridge
- Water Source
- Planned Hand Line
- Water Tank
- Camp
- Landing or Log Deck
- Completed Dozer Line
- Planned Plow Line
- Dip Site
- Lookout
- Culvert
- Completed Fuel Break
- Planned Road as Line
- Helispot
- Fire Origin
- Mobile Weather Unit
- Completed Hand Line
- Helibase
- Value at Risk
- Repeater
- Completed Mixed Construction Line
- Division Break
- Other
- Safety Zone
- Completed Road as Line



EA Gold IMT  
09/21/2022 0532  
North American 1983 Datum. Lat/Long Grid