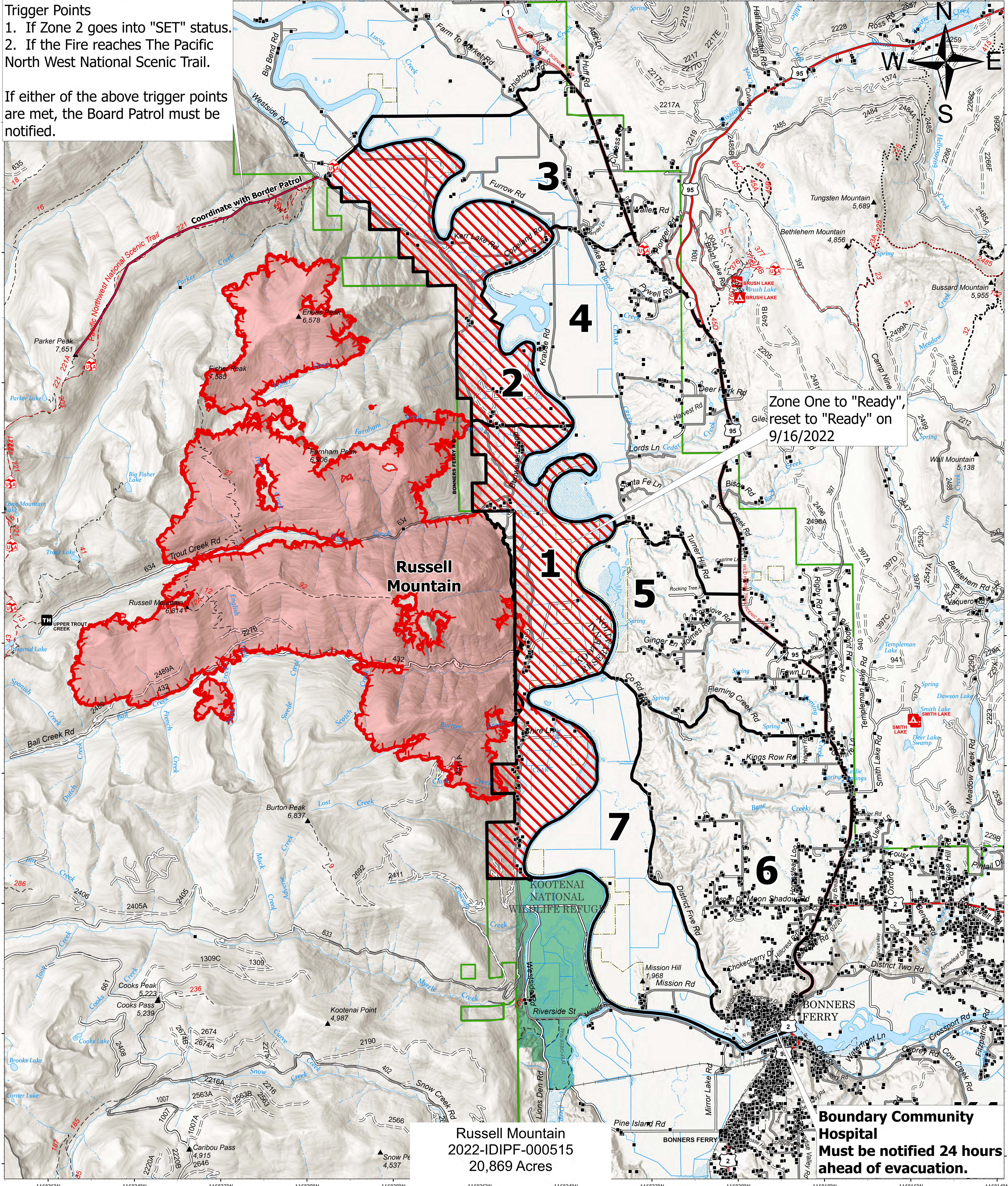


Trigger Points
 1. If Zone 2 goes into "SET" status.
 2. If the Fire reaches The Pacific North West National Scenic Trail.

If either of the above trigger points are met, the Board Patrol must be notified.



Russell Mountain
 2022-IDIPF-000515
 20,869 Acres

Zone One to "Ready",
 reset to "Ready" on
 9/16/2022

**Boundary Community
 Hospital
 Must be notified 24 hours
 ahead of evacuation.**

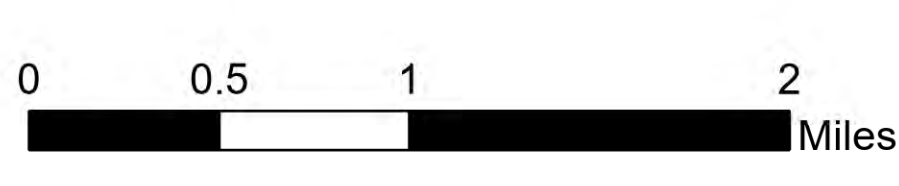
Ready, Set, Go

Kootenai River Complex
 2022-IDIPF-000653
 09/21/2022
 21,189 acres at 9/17/2022 1946
 Acres from IR

Evacuation Areas

- Ready
- Set
- Go
- Other Evacuation Areas

- Evacuation Area Structures
- Idaho Structures
- Wildfire Daily Fire Perimeter
- U.S. Fish Wildlife Service Lands



EA Gold IMT
 09/21/2022 0554
 North American 1983 Datum, Lat/Long Grid



Boundary County
 Emergency Management
 Public Information
 (208) 290-5316



Boundary County
 Sheriff's Office
 (208) 267-3151