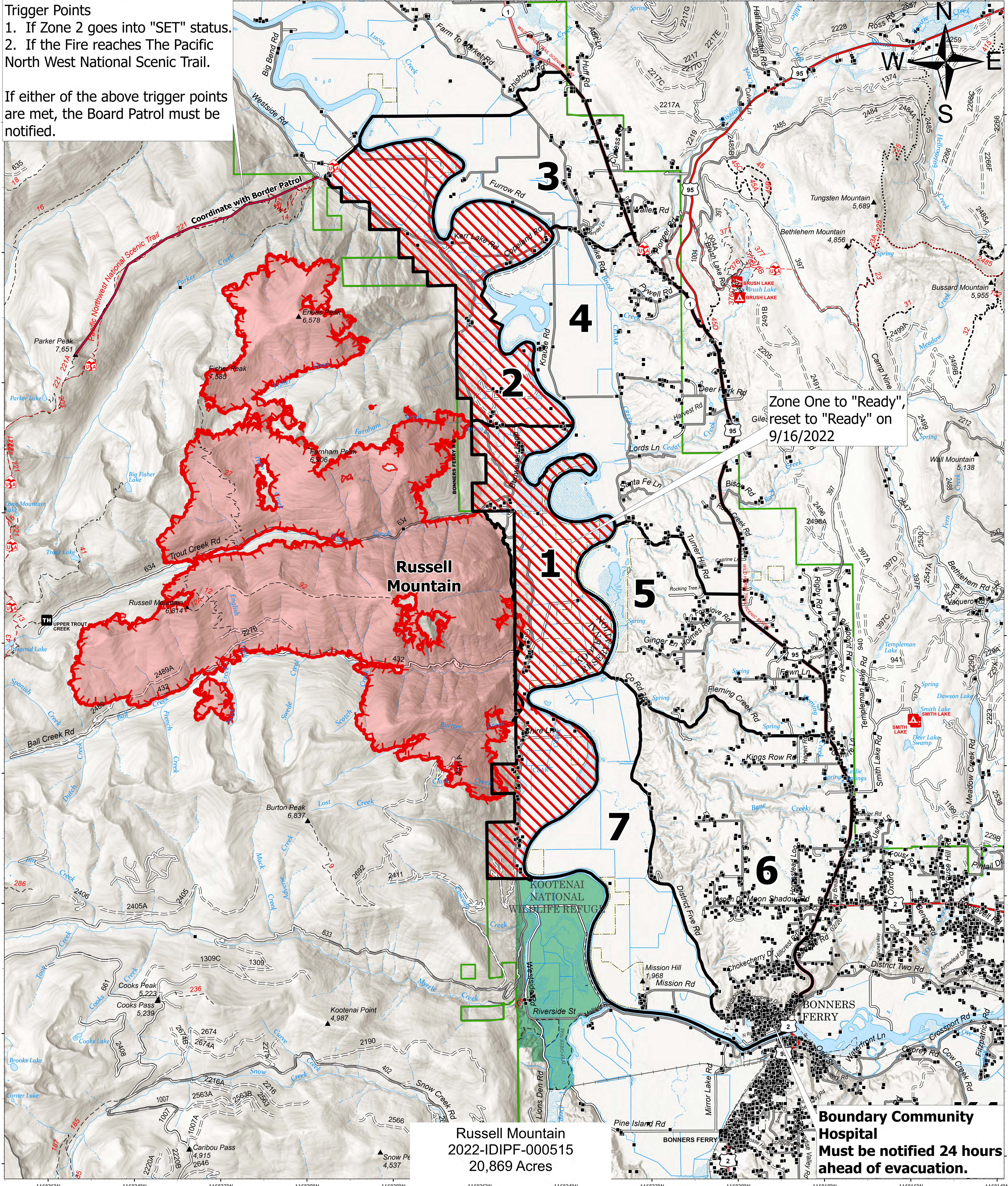


**Trigger Points**  
 1. If Zone 2 goes into "SET" status.  
 2. If the Fire reaches The Pacific North West National Scenic Trail.

If either of the above trigger points are met, the Board Patrol must be notified.



Russell Mountain  
 2022-IDIPF-000515  
 20,869 Acres

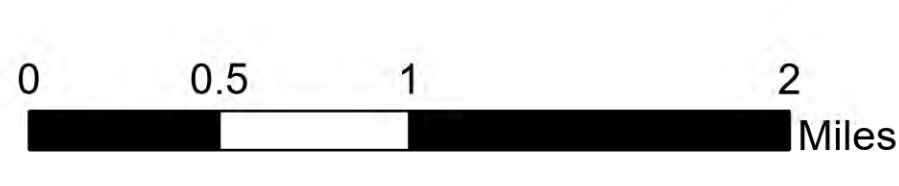
**Ready, Set, Go**

Kootenai River Complex  
 2022-IDIPF-000653  
 09/21/2022  
 21,189 acres at 9/17/2022 1946  
 Acres from IR

**Evacuation Areas**

- Ready
- Set
- Go
- Other Evacuation Areas

- Evacuation Area Structures
- Idaho Structures
- Wildfire Daily Fire Perimeter
- U.S. Fish Wildlife Service Lands



EA Gold IMT  
 09/21/2022 0552  
 North American 1983 Datum, Lat/Long Grid



Boundary County  
 Emergency Management  
 Public Information  
 (208) 290-5316



Boundary County  
 Sheriff's Office  
 (208) 267-3151