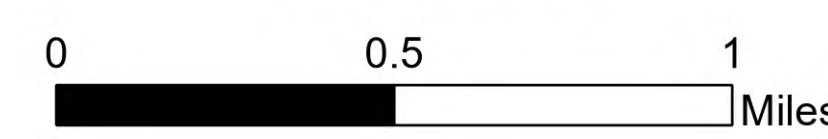


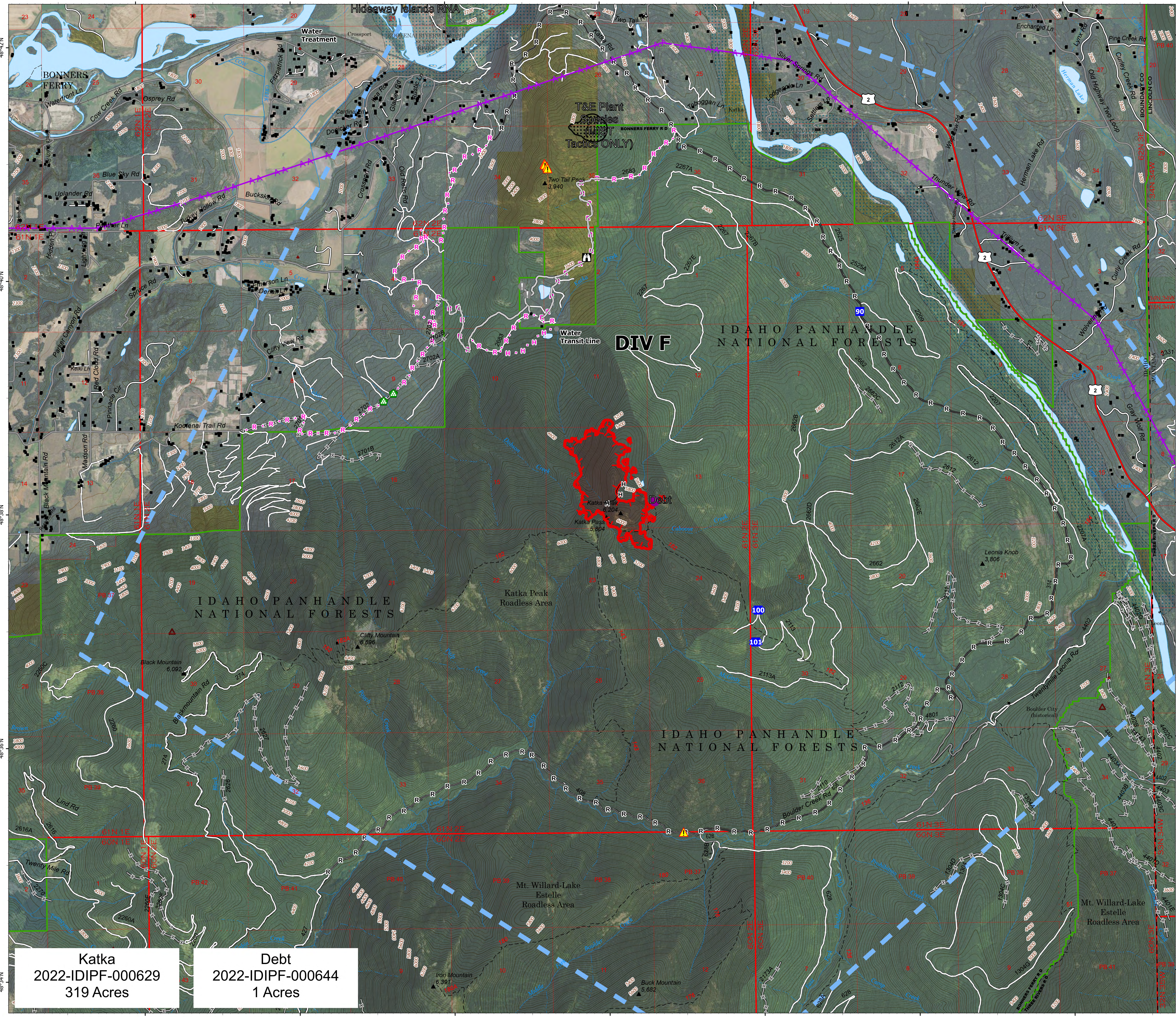
Operations_Ortho

South
Kootenai River Complex
2022-IDIPF-000653
09/22/2022

21,189 acres at 9/17/2022 1946
Acres from IR



- Helispot
- Drop Point
- 🏠 Lookout
- ⚠️ Value at Risk
- ⬮ Other
- 🌲 Landing or Log Deck
- ⚠️ Hazard
- Completed Hand Line
- Completed Road as Line
- Planned Hand Line
- Planned Road as Line
- Access or Improved Road
- ⚡ Aerial Hazard
- Temporary Flight Restriction
- Other
- 🔴 Wildfire Daily Fire Perimeter
- 🛣️ US Primary Route
- 🛣️ Paved Roads
- 🛣️ Dirt (Not Paved)
- 🌲 Forest Service Land
- 🌲 State Public Lands
- 🌲 Bureau of Land Management Lands
- 🏠 Idaho Structures



NR Team 4
09/21/2022 0552
North American 1983 Datum, Lat/Long Grid

Katka
2022-IDIPF-000629
319 Acres

Debt
2022-IDIPF-000644
1 Acres

116°16'W 116°14'W 116°12'W 116°10'W 116°8'W 116°6'W 116°4'W

48°42'N 48°40'N 48°38'N 48°36'N 48°34'N

116°16'W 116°14'W 116°12'W 116°10'W 116°8'W 116°6'W 116°4'W