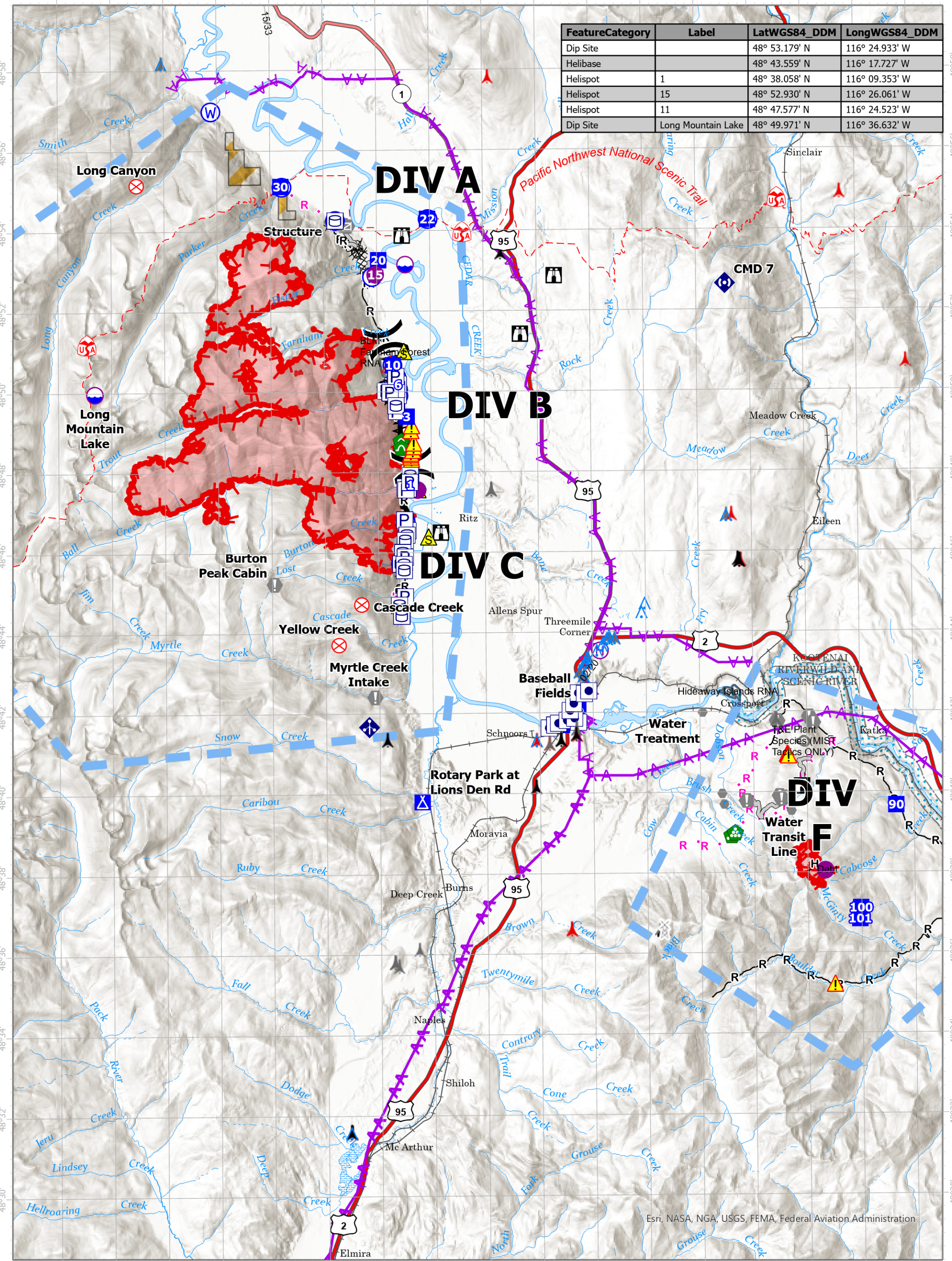
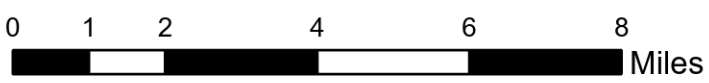


FeatureCategory	Label	LatWGS84_DDM	LongWGS84_DDM
Dip Site		48° 53.179' N	116° 24.933' W
Helibase		48° 43.559' N	116° 17.727' W
Helispot	1	48° 38.058' N	116° 09.353' W
Helispot	15	48° 52.930' N	116° 26.061' W
Helispot	11	48° 47.577' N	116° 24.523' W
Dip Site	Long Mountain Lake	48° 49.971' N	116° 36.632' W



Air Ops
Kootenai River Complex
2022-IDIPF-000653
09/21/2022
 21,189 acres at 9/17/2022 1946
 Acres from IR

- Other Property
- Pump
- Water Tank
- Dip Site
- Helispot
- Helibase
- Division Break
- Incident Command Post
- Drop Point
- Camp
- Lookout
- Fire Origin
- Value at Risk
- Gate
- Bridge
- Landing or Log Deck
- Culvert
- Mobile Weather Unit
- Repeater
- Safety Zone
- Hazard
- Water Source
- Completed Dozer Line
- Completed Fuel Break
- Completed Hand Line
- Completed Mixed Construction Line
- Completed Road as Line
- Planned Dozer Line
- Planned Hand Line
- Planned Plow Line
- Planned Road as Line



EA Gold IMT
 09/21/2022 0556
 North American 1983 Datum. Lat/Long Grid