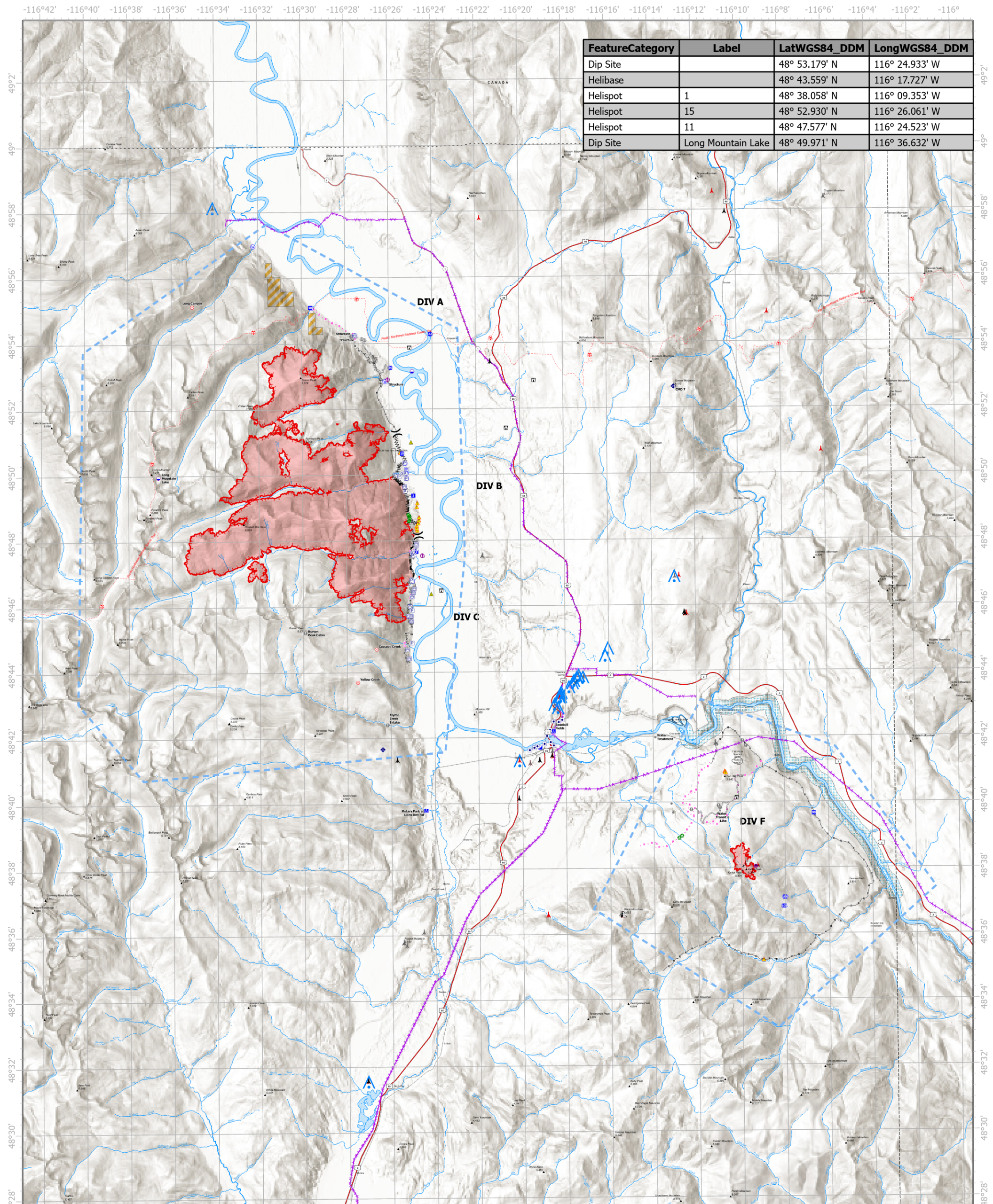


FeatureCategory	Label	LatWGS84_DDM	LongWGS84_DDM
Dip Site		48° 53.179' N	116° 24.933' W
Helibase		48° 43.559' N	116° 17.727' W
Helispot	1	48° 38.058' N	116° 09.353' W
Helispot	15	48° 52.930' N	116° 26.061' W
Helispot	11	48° 47.577' N	116° 24.523' W
Dip Site	Long Mountain Lake	48° 49.971' N	116° 36.632' W



Air Ops

Aerial Hazards

Kootenai River Complex
2022-IDIPF-000653
9/22/2022

21,427 acres at 9/21/2022 1906
Acres from IR

<ul style="list-style-type: none"> ■ Other Property P Pump W Water Tank ● Dip Site ● Helispot H Helibase) Division Break ■ Incident Command Post ■ Drop Point ▲ Camp f Lookout ⊗ Fire Origin 	<ul style="list-style-type: none"> ■ Value at Risk ● Other G Gate B Bridge + Landing or Log Deck + Culvert + Mobile Weather Unit + Repeater ▲ Safety Zone ▲ Hazard W Water Source --- Completed Dozer Line 	<ul style="list-style-type: none"> --- Completed Fuel Break --- Completed Hand Line --- Completed Mixed Construction Line --- Completed Road as Line --- Planned Dozer Line --- Planned Hand Line --- Planned Plow Line --- Planned Road as Line --- Access or Improved Road --- Aerial Hazard --- Temporary Flight Restriction --- Fire Edge (Field Collection)
<ul style="list-style-type: none"> □ Other □ Wildfire Daily Fire Perimeter --- US Primary Route --- US Secondary Route --- State Primary Route □ Wild and Scenic River □ BLM Wilderness Study Area ⊗ Repeater and Base Station ▲ Tower > 200' ▲ Tower 30' - 200' ▲ Towers of Unknown Height 	<div style="text-align: right;"> </div> <div style="text-align: right; margin-top: 10px;"> </div> <div style="text-align: right; margin-top: 10px;"> </div>	

Miles