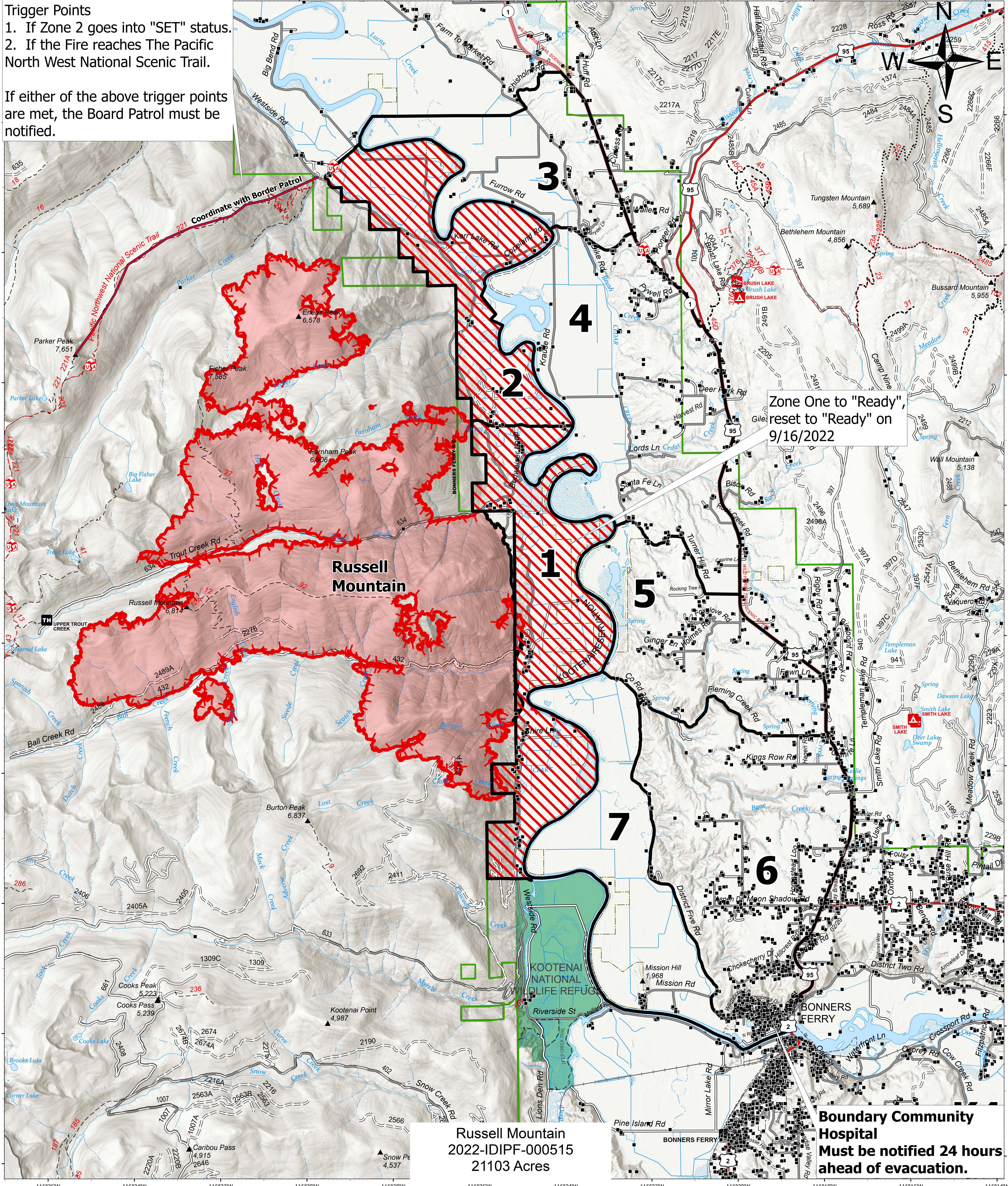


**Trigger Points**  
 1. If Zone 2 goes into "SET" status.  
 2. If the Fire reaches The Pacific North West National Scenic Trail.

If either of the above trigger points are met, the Board Patrol must be notified.



Zone One to "Ready",  
 reset to "Ready" on  
 9/16/2022

Russell Mountain  
 2022-IDIPF-000515  
 21103 Acres

**Boundary Community  
 Hospital  
 Must be notified 24 hours  
 ahead of evacuation.**

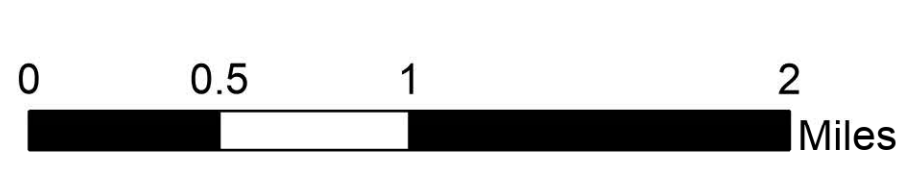
**Ready, Set, Go**

Kootenai River Complex  
 2022-IDIPF-000653  
 9/22/2022  
 21,427 acres at 9/21/2022 1906  
 Acres from IR

**Evacuation Areas**

- Ready
- Set
- Go
- Other Evacuation Areas

- Evacuation Area Structures
- Idaho Structures
- Wildfire Daily Fire Perimeter
- U.S. Fish Wildlife Service Lands



EA Gold IMT  
 9/22/2022 0518  
 North American 1983 Datum, Lat/Long Grid



Boundary County  
 Emergency Management  
 Public Information  
 (208) 290-5316

Boundary County  
 Sheriff's Office  
 (208) 267-3151