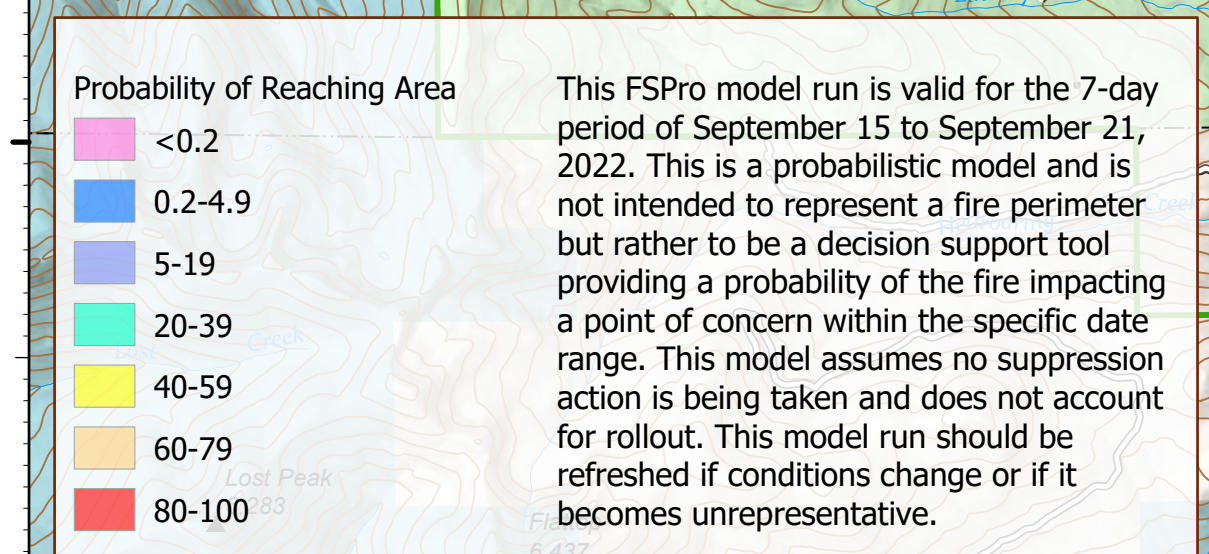
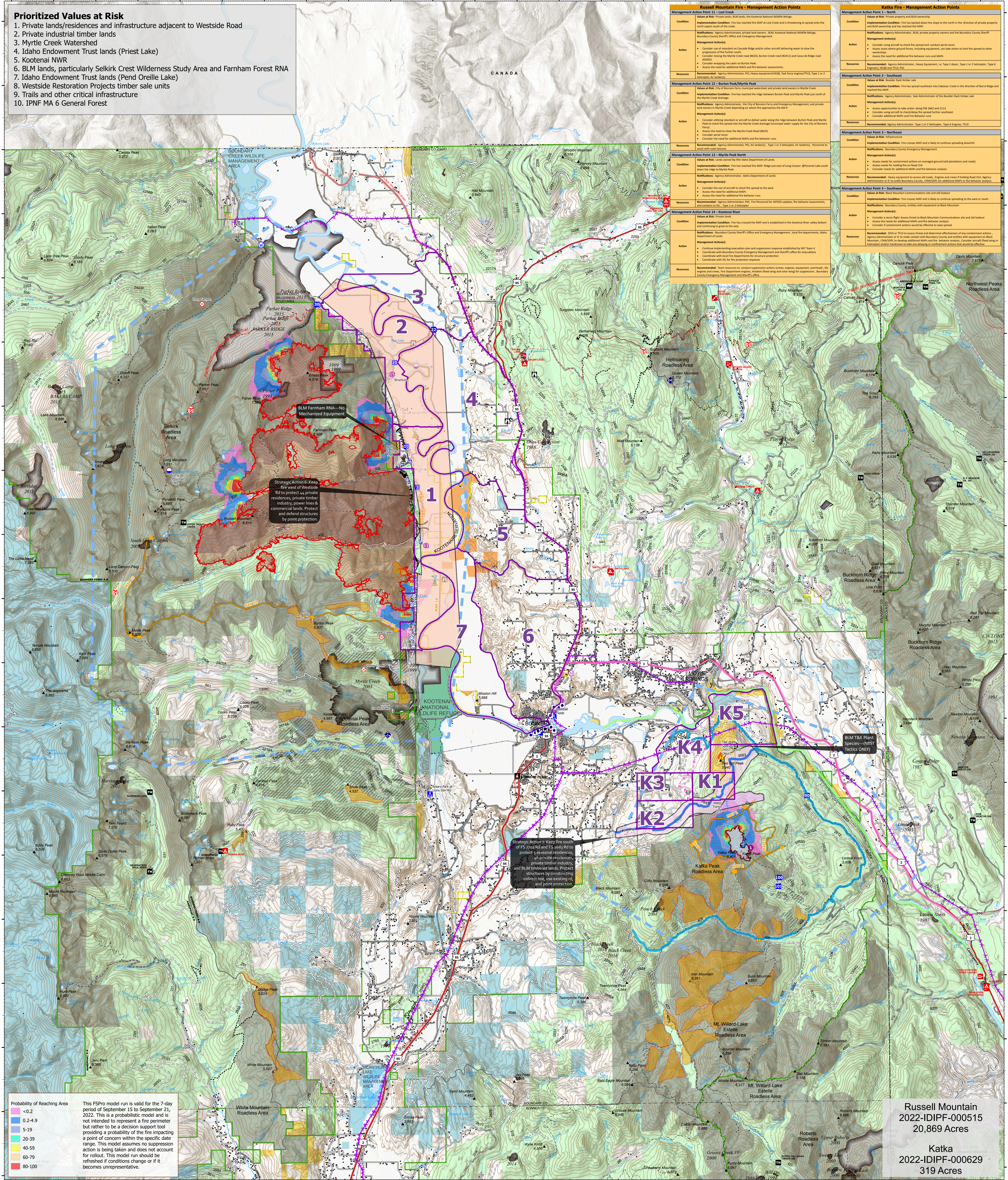


- ### Prioritized Values at Risk
1. Private lands/residences and infrastructure adjacent to Westside Road
  2. Private industrial timber lands
  3. Myrtle Creek Watershed
  4. Idaho Endowment Trust lands (Priest Lake)
  5. Kootenai NWR
  6. BLM lands, particularly Selkirk Crest Wilderness Study Area and Farnham Forest RNA
  7. Idaho Endowment Trust lands (Pend Oreille Lake)
  8. Westside Restoration Projects timber sale units
  9. Trails and other critical infrastructure
  10. IPNF MA 6 General Forest



#### Russell Mountain Fire - Management Action Points

Management Action Point 11 - Lost Creek
<b>Condition:</b> Values at Risk: City of Stevens Ferry municipal watershed and private land owners in Myrtle Creek.
<b>Implementation Condition:</b> Fire has reached this MAP at Lost Creek and is threatening to spread onto the north aspect south of the creek.
<b>Notification:</b> Agency Administrator, Private Land Owners, BLM, Kootenai National Wildlife Refuge, Boundary County Sheriff's Office and Emergency Management.
<b>Management Action(s):</b> <ul style="list-style-type: none"> <li>Consider offering standstill or aircraft to deliver water along the ridge between Lost Creek and Myrtle Creek to slow the progression of the fire further south.</li> <li>Coordinate with the Myrtle Creek Road (MCR) Burton Creek Road (BCR) and Cascade Ridge Road (CR) to ensure access to the creek on Burton Peak.</li> <li>Consider offering aircraft to deliver water along the ridge between Burton Peak and Myrtle Peak.</li> <li>Assess the need for additional MAPs and the behavior assessment.</li> </ul>
<b>Resources:</b> Recommended: Agency Administrator, PWS Heavy equipment/HIGD, Tank hose engine/TIGD, Type 1 or 2 Helicopter, Type 10 Helicopter.
Management Action Point 12 - Burton Peak/Myrtle Peak
<b>Condition:</b> Values at Risk: City of Stevens Ferry municipal watershed and private land owners in Myrtle Creek.
<b>Implementation Condition:</b> Fire has reached the ridge between Burton Peak and Myrtle Peak just north of the Myrtle Creek drainage.
<b>Notification:</b> Agency Administrator, the City of Stevens Ferry and Emergency Management, and private land owners in Myrtle Creek depending on where the equipment is MAP.
<b>Management Action(s):</b> <ul style="list-style-type: none"> <li>Consider offering standstill or aircraft to deliver water along the ridge between Burton Peak and Myrtle Peak to check the spread into the Myrtle Creek drainage (avoided water supply for the City of Stevens Ferry).</li> <li>Assess the need for additional MAPs.</li> <li>Consider aerial retardant.</li> <li>Consider the need for additional MAPs and the behavior assessment.</li> </ul>
<b>Resources:</b> Recommended: Agency Administrator, PWS Air tanker(s), Type 1 or 2 Helicopter, Air tanker(s), Personnel to assist with standstill.
Management Action Point 13 - Myrtle Peak North
<b>Condition:</b> Values at Risk: Lands owned by the Idaho Department of Lands.
<b>Implementation Condition:</b> Fire has reached this MAP just east of Long Canyon @ Myrtle Lake south of Myrtle Creek.
<b>Notification:</b> Agency Administrator, Idaho Department of Lands.
<b>Management Action(s):</b> <ul style="list-style-type: none"> <li>Consider the use of aircraft to check fire spread to the west.</li> <li>Assess the need for additional MAPs.</li> <li>Assess the need for additional MAPs and the behavior assessment.</li> </ul>
<b>Resources:</b> Recommended: Agency Administrator, PWS Fire Personnel for WIGOS, fire behavior assessments, and coordination with IDL for fire protection response.
Management Action Point 14 - Kootenai River
<b>Condition:</b> Values at Risk: Private lands.
<b>Implementation Condition:</b> Fire has crossed the MAP and is established in the Kootenai River valley bottom and continuing to grow to the east.
<b>Notification:</b> Boundary County Sheriff's Office and Emergency Management, local fire departments, Idaho Department of Lands.
<b>Management Action(s):</b> <ul style="list-style-type: none"> <li>Continue implementing evacuation plan and suppression response established by BCI Team 4.</li> <li>Coordinate with Boundary County Emergency Management and Sheriff's Office for evacuations.</li> <li>Coordinate with local fire departments for structure protection.</li> <li>Coordinate with IDL for fire protection response.</li> </ul>
<b>Resources:</b> Recommended: Team resources to conduct suppression actions (crew, engine, equipment, overwatch), AT, engine and crew, fire department engines, Aerial (tank and rotor wing) for suppression, Boundary County Emergency Management and Sheriff's Office.

#### Katka Fire - Management Action Points

Management Action Point 3 - North
<b>Condition:</b> Values at Risk: Private property and BLM ownership.
<b>Implementation Condition:</b> Fire has backed down the slope to the north in the direction of private property and BLM ownership and has reached this MAP.
<b>Notification:</b> Agency Administrator, BLM, private property owners and the Boundary County Sheriff's Office.
<b>Management Action(s):</b> <ul style="list-style-type: none"> <li>Consider using aircraft to check fire spread and conduct aerial retardant.</li> <li>Assess areas where ground forces, including equipment, can take action to limit fire spread to other areas.</li> <li>Assess the need for additional MAPs and the behavior assessment.</li> </ul>
<b>Resources:</b> Recommended: Agency Administrator, Heavy Equipment, 1x Type 2 Helicopter, Type 1 Helicopter, Type 10 Helicopter, Type 11 Helicopter, Type 12 Helicopter.
Management Action Point 2 - Southeast
<b>Condition:</b> Values at Risk: Boulder Dash timber sale.
<b>Implementation Condition:</b> Fire has spread southeast into Cascade Creek in the direction of Boulder Dash and reached this MAP.
<b>Notification:</b> Agency Administrator, Sale Administrator of the Boulder Dash timber sale.
<b>Management Action(s):</b> <ul style="list-style-type: none"> <li>Assess opportunities to take action along FS 2663 and 2113.</li> <li>Consider using aircraft to check fire spread further southeast.</li> <li>Consider additional MAPs and the behavior assessment.</li> </ul>
<b>Resources:</b> Recommended: Agency Administrator, Type 1 or 2 Helicopter, Type 6 Engine, TIGD.
Management Action Point 3 - Northeast
<b>Condition:</b> Values at Risk: Private lands.
<b>Implementation Condition:</b> Fire crosses MAP and is likely to continue spreading uphill.
<b>Notification:</b> Boundary County Emergency Management.
<b>Management Action(s):</b> <ul style="list-style-type: none"> <li>Assess opportunities to take action on managed ground (old plantations and roads).</li> <li>Assess the need for holding fire on Road 214.</li> <li>Consider the need for additional MAPs and the behavior assessment.</li> </ul>
<b>Resources:</b> Recommended: Heavy equipment to access old roads, Engines and crew if holding Road 214, Agency Administrator or IC to notify Boundary County, IDANOP, for additional MAPs on the behavior assessment.
Management Action Point 4 - Southeast
<b>Condition:</b> Values at Risk: BLM Wilderness Communications site and old lookout.
<b>Implementation Condition:</b> Fire crosses MAP and is likely to continue spreading to the west or south.
<b>Notification:</b> Boundary County, entities with equipment at Black Mountain.
<b>Management Action(s):</b> <ul style="list-style-type: none"> <li>Consider a crew right to assess threat to Black Mountain Communications site and old lookout.</li> <li>Assess opportunities to take action along FS 2663 and 2113.</li> <li>Consider if containment actions would be effective to slow spread.</li> </ul>
<b>Resources:</b> Recommended: OWS or TIGD to assess threat and determine effectiveness of any containment actions, Agency Administrator or IC to make contact with Boundary County and entities with equipment on Black Mountain, IDANOP to develop additional MAPs and the behavior assessment, Consider aircraft (tank wing or helicopter) and/or equipment to take any structure or containment actions that would be effective.

Russell Mountain  
2022-IDIPF-000515  
20,869 Acres

Katka  
2022-IDIPF-000629  
319 Acres

## Strategic Operations Planning

### Kootenai River Complex

2022-IDIPF-000653

09/22/2022

21,189 acres as of 9/20/2022 1911

Acres from IR

- |                         |                       |                                     |                                 |                                    |
|-------------------------|-----------------------|-------------------------------------|---------------------------------|------------------------------------|
| ■ Structures            | ⊠ Lookout             | ⚠ Hazard                            | — Access or Improved Road       | 🌲 Forest Service Land              |
| □ Other Property        | ⊗ Fire Origin         | 💧 Water Source                      | 🛣 Management Action Point       | 🏠 State Public Lands               |
| ⊠ Pump                  | ⊙ Value at Risk       | ⊗ Completed Dozer Line              | 🚰 Aerial Hazard                 | 🐟 U.S. Fish Wildlife Service Lands |
| ⊠ Water Tank            | ⊙ Other               | ⊗ Completed Fuel Break              | 🚧 Temporary Flight Restriction  | 🏡 Bureau of Land Management Lands  |
| ⊠ Dip Site              | ⊙ Gate                | ⊗ Completed Hand Line               | 🔥 Fire Edge (Field Collection)  | 🌲 BLM Farnham Forest RNA           |
| ⊠ Helispot              | ⊙ Bridge              | ⊗ Completed Mixed Construction Line | ⊠ Other                         | 🔥 Rx Burns                         |
| ⊠ Helibase              | ⊙ Landing or Log Deck | ⊗ Completed Road as Line            | 🔥 Wildfire Daily Fire Perimeter | 🔥 Timber Sales                     |
| ⊠ Division Break        | ⊙ Culvert             | ⊗ Planned Dozer Line                | 🔥 Historic Fire Perimeters      |                                    |
| ⊠ Incident Command Post | ⊙ Mobile Weather Unit | ⊗ Planned Hand Line                 | 🔥 Evacuation Areas (RSG)        |                                    |
| ⊠ Drop Point            | ⊙ Repeater            | ⊗ Planned Plow Line                 | 🏠 Indian Reservation            |                                    |
| ⊠ Camp                  | ⊙ Safety Zone         | ⊗ Planned Road as Line              | 🏠 American Indian Lands         |                                    |

**EASTERN AREA**  
incident management team

EA Gold IMT  
9/21/2022 1856  
North American 1983 Datum, Lat/Long Grid