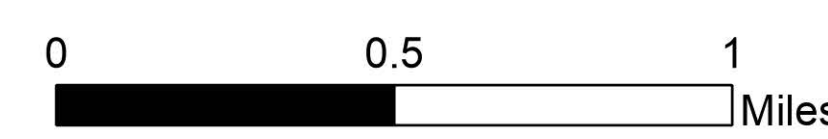
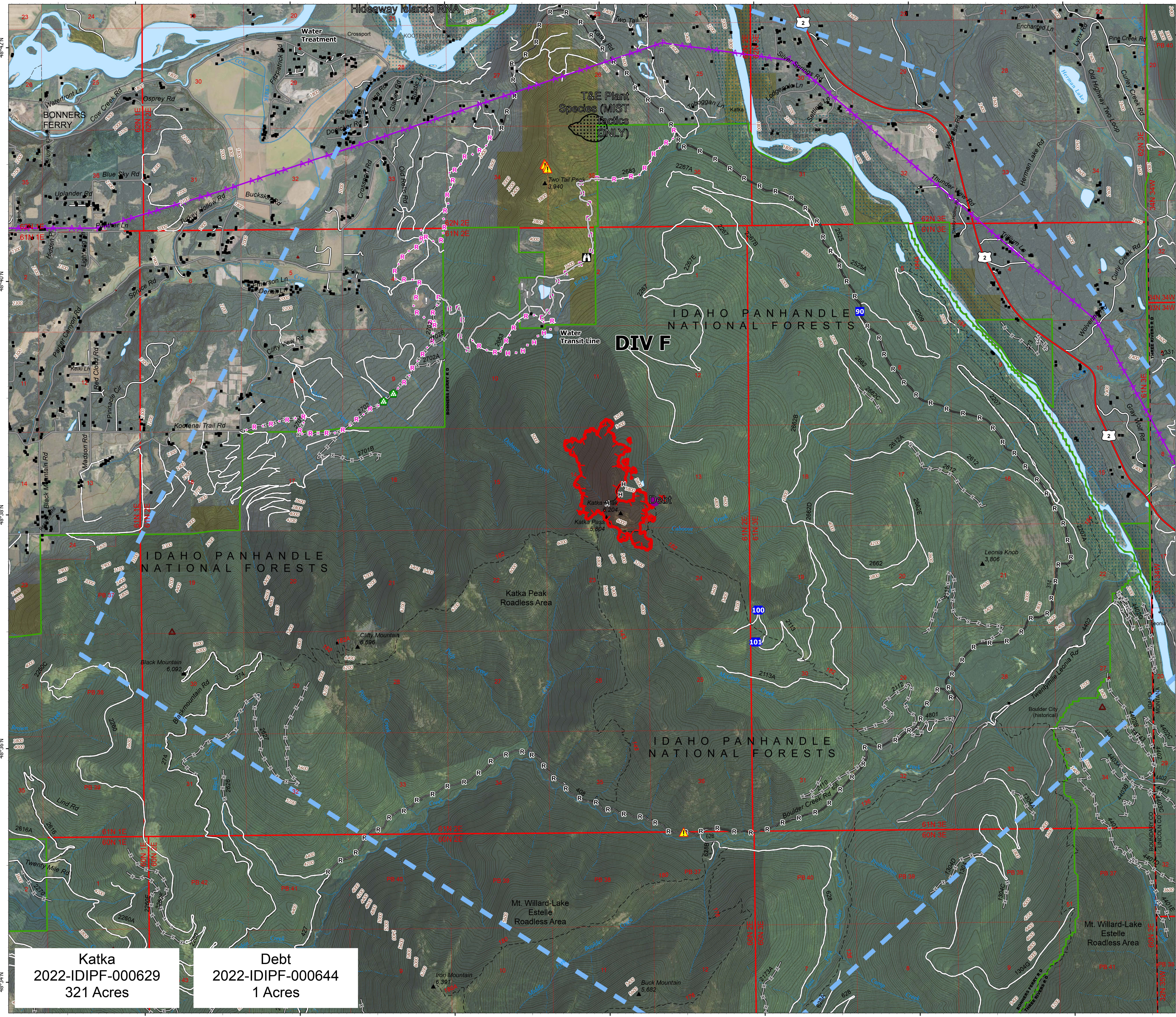


Operations_Ortho

South
Kootenai River Complex
2022-IDIPF-000653
9/22/2022
21,427 acres at 9/21/2022 1906
Acres from IR

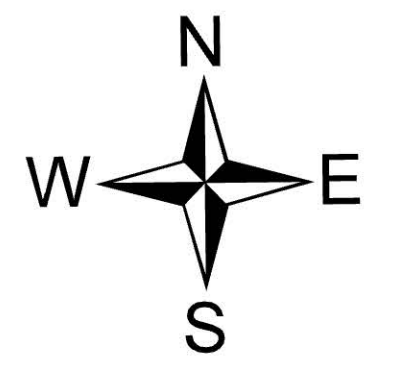


- Helispot
- Drop Point
- 👁 Lookout
- ⚠ Value at Risk
- ⬛ Other
- 🌲 Landing or Log Deck
- ⚠ Hazard
- Completed Hand Line
- Completed Road as Line
- Planned Hand Line
- Planned Road as Line
- Access or Improved Road
- 🚁 Aerial Hazard
- 🛑 Temporary Flight Restriction
- 🛑 Other
- 🔴 Wildfire Daily Fire Perimeter
- 🛣 US Primary Route
- 🛣 Paved Roads
- 🛣 Dirt (Not Paved)
- 🌲 Forest Service Land
- 🌲 State Public Lands
- 🌲 Bureau of Land Management Lands
- 🏠 Idaho Structures



Katka
2022-IDIPF-000629
321 Acres

Debt
2022-IDIPF-000644
1 Acres



NR Team 4
9/22/2022 05:12
North American 1983 Datum, Lat/Long Grid