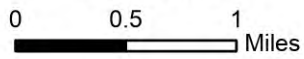


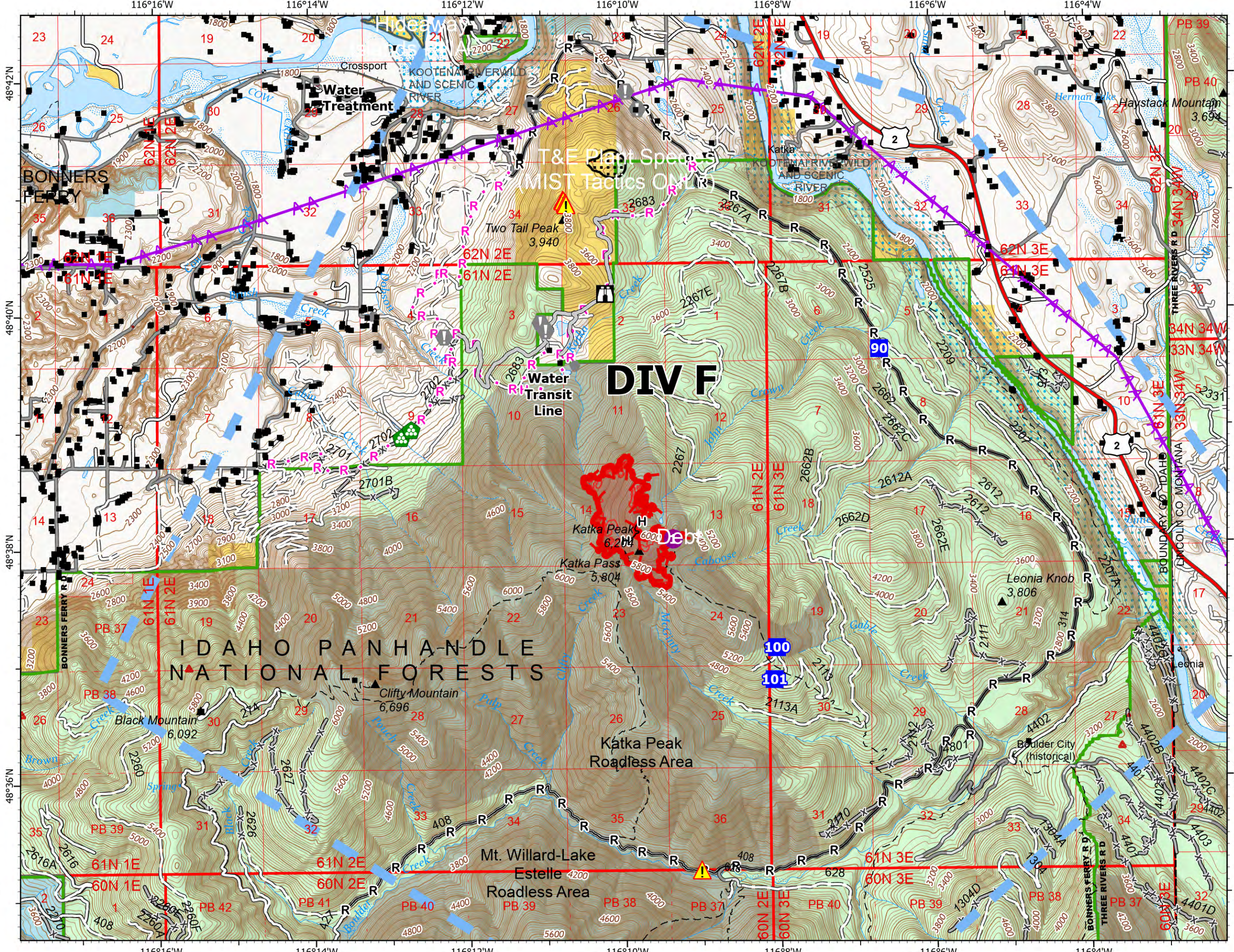
# Operations South

Kootenai River Complex  
2022-IDIPF-000653  
9/22/2022

21,427 acres at 9/21/2022 1906  
Acres from IR



- Helispot
- Drop Point
- 🏠 Lookout
- ⚠️ Value at Risk
- Other
- 🌲 Landing or Log Deck
- ⚠️ Hazard
- H— Completed Hand Line
- R— Completed Road as Line
- H Planned Hand Line
- R Planned Road as Line
- Access or Improved Road
- ☆ Aerial Hazard
- 🛑 Temporary Flight Restriction
- 🛑 Other
- 🔴 Wildfire Daily Fire Perimeter
- 🔴 IR Heat Perimeter
- 🔴 IR Intense Heat
- 🔴 IR Scattered Heat
- 🛣️ US Primary Route
- 🛣️ Paved Roads
- 🛣️ Dirt (Not Paved)
- 🌲 Forest Service Land



**DIV F**

**IDAHO PANHANDLE NATIONAL FORESTS**

