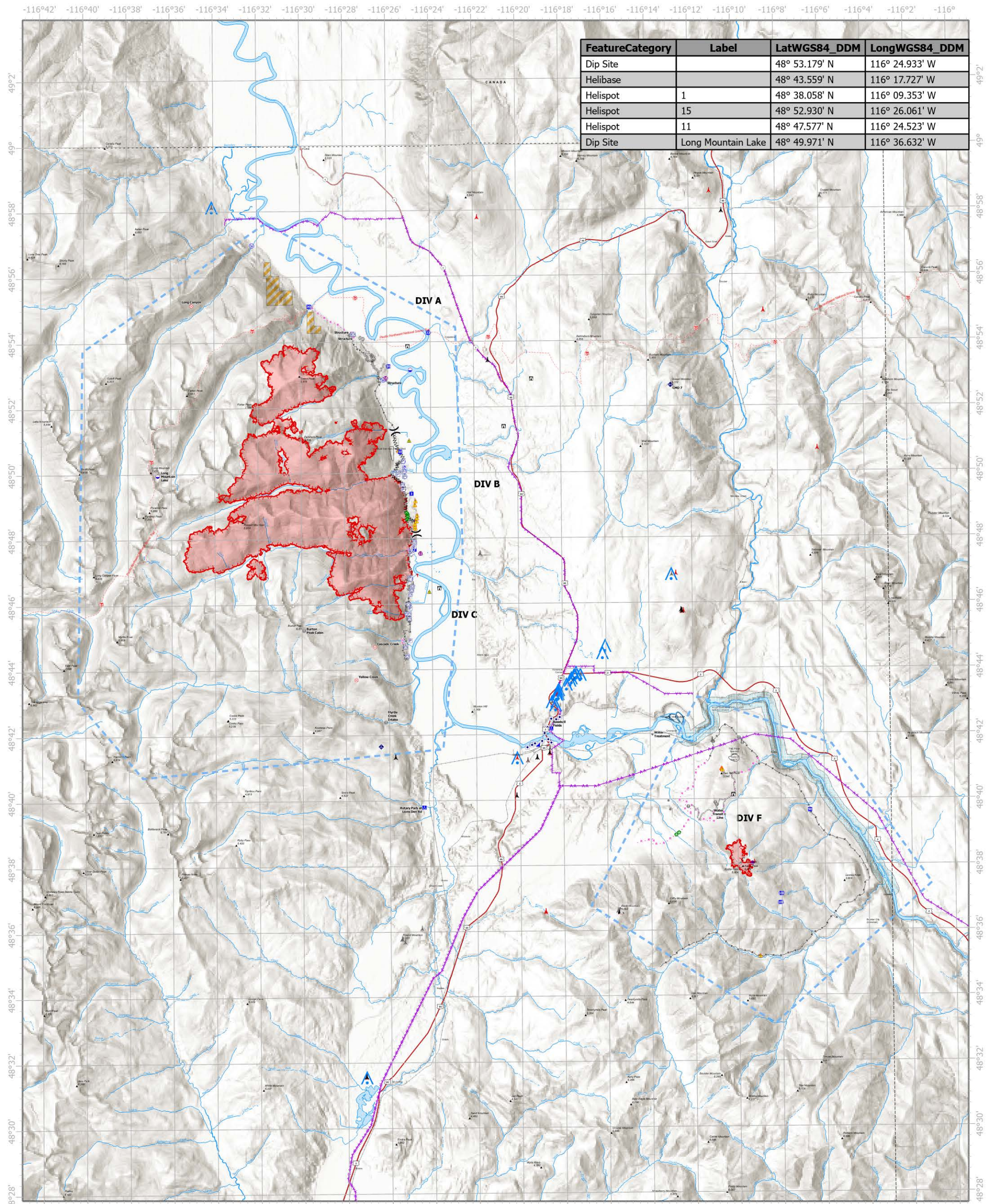


FeatureCategory	Label	LatWGS84_DDM	LongWGS84_DDM
Dip Site		48° 53.179' N	116° 24.933' W
Helibase		48° 43.559' N	116° 17.727' W
Helispot	1	48° 38.058' N	116° 09.353' W
Helispot	15	48° 52.930' N	116° 26.061' W
Helispot	11	48° 47.577' N	116° 24.523' W
Dip Site	Long Mountain Lake	48° 49.971' N	116° 36.632' W



- | | | | |
|-----------------------|----------------------|-----------------------------------|-------------------------------|
| Other Property | Value at Risk | Completed Fuel Break | Other |
| Pump | Other | Completed Hand Line | Wildfire Daily Fire Perimeter |
| Water Tank | Gate | Completed Mixed Construction Line | US Primary Route |
| Dip Site | Bridge | Completed Road as Line | US Secondary Route |
| Helispot | Landing or Log Deck | Planned Dozer Line | State Primary Route |
| Helibase | Culvert | Planned Hand Line | Wild and Scenic River |
| Division Break | Mobile Weather Unit | Planned Plow Line | BLM Wilderness Study Area |
| Incident Command Post | Repeater | Planned Road as Line | Repeater and Base Station |
| Drop Point | Safety Zone | Access or Improved Road | Tower > 200' |
| Camp | Hazard | Aerial Hazard | Tower 30' - 200' |
| Lookout | Water Source | Temporary Flight Restriction | Towers of Unknown Height |
| Fire Origin | Completed Dozer Line | Fire Edge (Field Collection) | |

Air Ops

Aerial Hazards

Kootenai River Complex

2022-IDIPF-000653

9/23/2022

21,501 acres at 9/22/2022 2008
Acres from IR



Miles