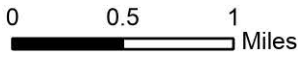


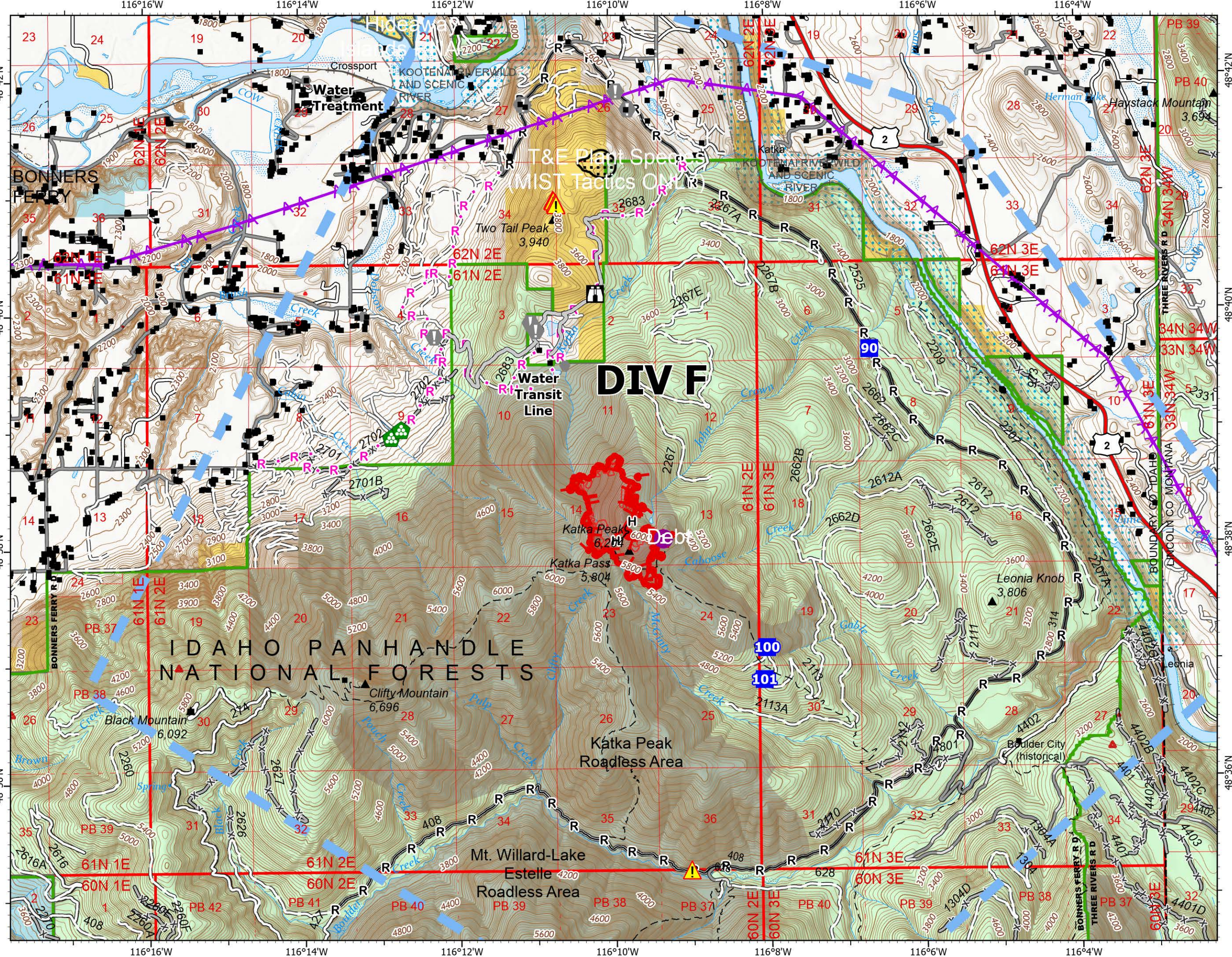
Operations South

Kootenai River Complex
2022-IDIPF-000653
9/23/2022

21,501 acres at 9/22/2022 0808
Acres from IR



- Helispot
- Drop Point
- 🏠 Lookout
- ⚠️ Value at Risk
- Other
- 🌲 Landing or Log Deck
- ⚠️ Hazard
- H— Completed Hand Line
- R— Completed Road as Line
- H Planned Hand Line
- R Planned Road as Line
- Access or Improved Road
- ⚡ Aerial Hazard
- 🛑 Temporary Flight Restriction
- 🛑 Other
- 🔥 Wildfire Daily Fire Perimeter
- 🔥 IR Heat Perimeter
- 🔥 IR Intense Heat
- 🔥 IR Scattered Heat
- 🛣️ US Primary Route
- 🛣️ Paved Roads
- 🛣️ Dirt (Not Paved)
- 🌲 Forest Service Land



DIV F

IDAHO PANHANDLE NATIONAL FORESTS

