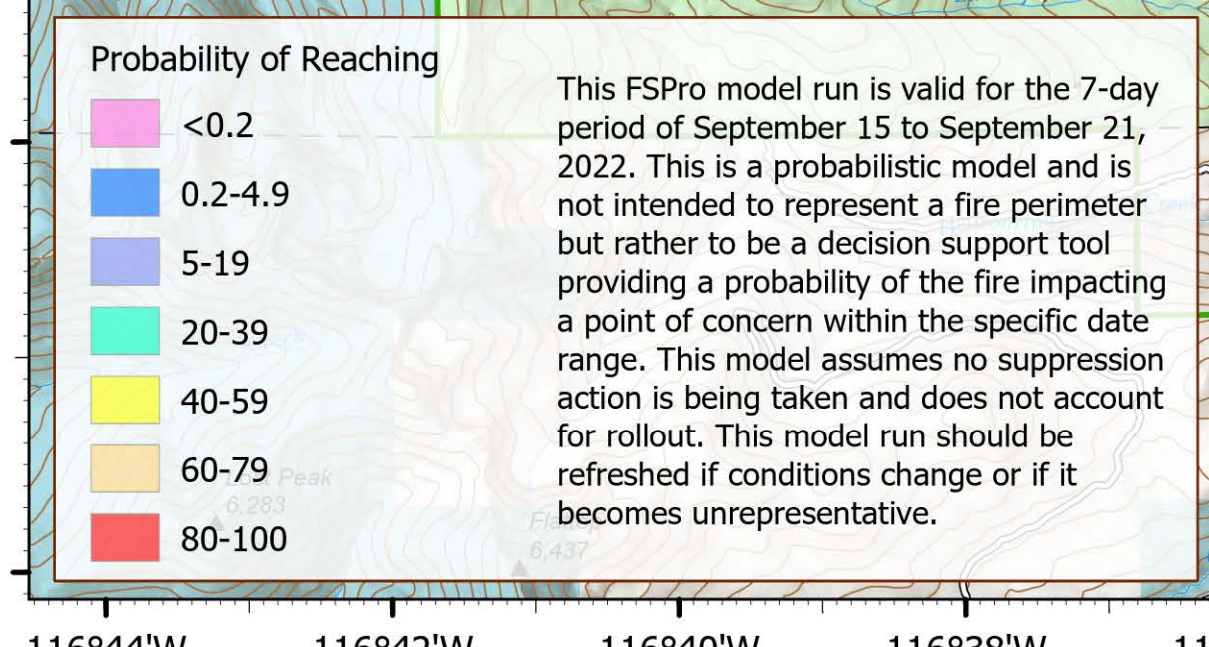
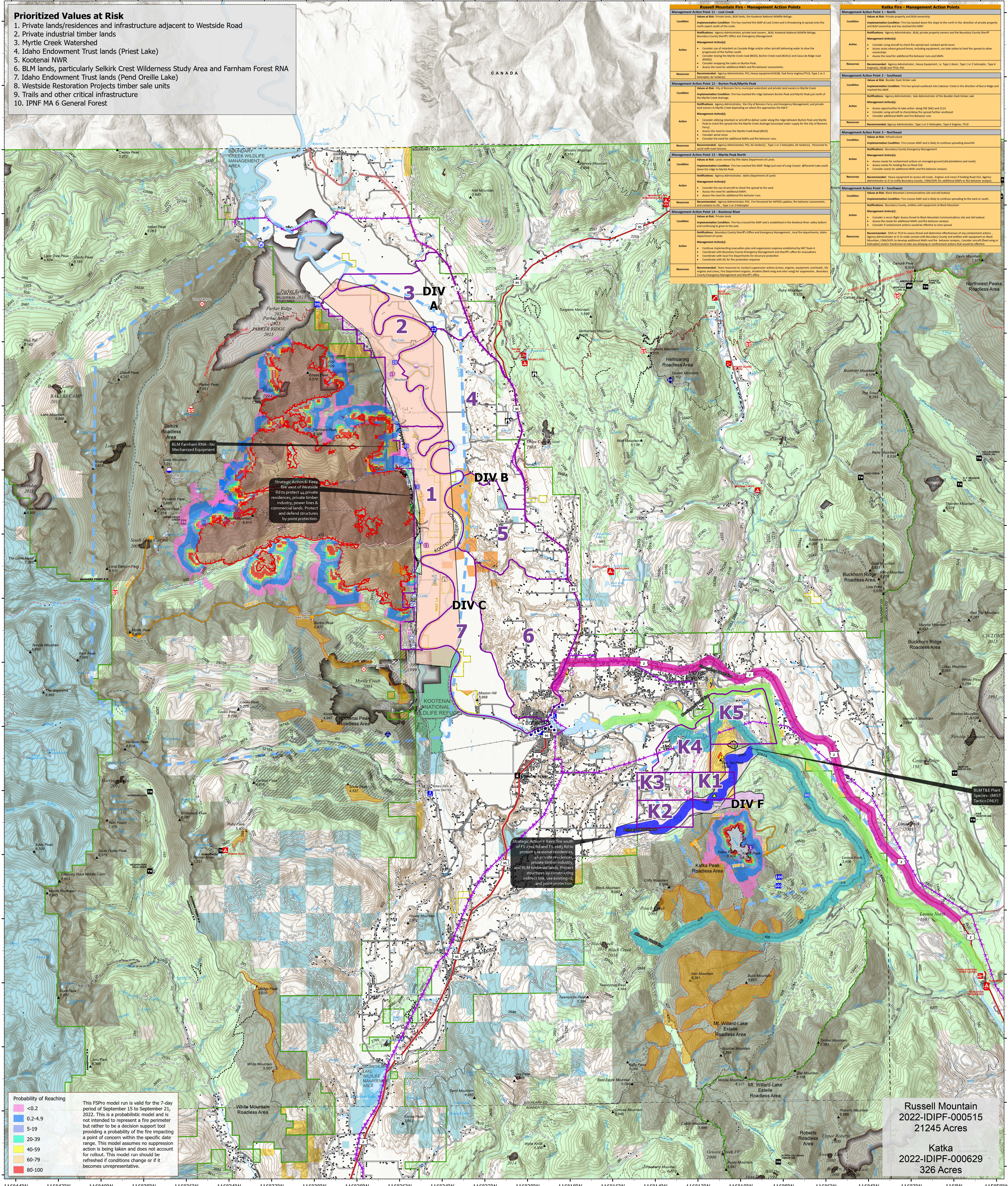


- ### Prioritized Values at Risk
1. Private lands/residences and infrastructure adjacent to Westside Road
 2. Private industrial timber lands
 3. Myrtle Creek Watershed
 4. Idaho Endowment Trust lands (Priest Lake)
 5. Kootenai NWR
 6. BLM lands, particularly Selkirk Crest Wilderness Study Area and Farnham Forest RNA
 7. Idaho Endowment Trust lands (Pend Oreille Lake)
 8. Westside Restoration Projects timber sale units
 9. Trails and other critical infrastructure
 10. IPNF MA 6 General Forest



Russell Mountain Fire - Management Action Points

Management Action Point 11 - Lost Creek
Condition: Values at Risk: City of Bonner Ferry municipal watershed and private land owners in Myrtle Creek.
Implementation: Fire has reached this MAP at Lost Creek and is threatening to spread onto the north-south road south of the creek.
Notification: Agency Administrator, private land owners, BLM, Kootenai National Wildlife Refuge, Boundary County Sheriff's Office and Emergency Management.
Management Action(s): <ul style="list-style-type: none"> Consider off-road vehicle or aircraft to deliver water to the progression of the fire further south. Consider off-road vehicle or aircraft to deliver water to the progression of the fire further south. Consider off-road vehicle or aircraft to deliver water to the progression of the fire further south. Assess the need for additional MAMs and fire behavior assessments.
Resources: Recommended: Agency Administrator, PDS Heavy equipment/HIGB, Tank hose engine/TED, Type 1 or 2 helicopter, Type 1 or 2 Helicopter.

Katka Fire - Management Action Points

Management Action Point 1 - North
Condition: Values at Risk: Private property and BLM ownership.
Implementation: Fire has locked down the slope to the north in the direction of private property and BLM ownership and has reached this MAP.
Notification: Agency Administrator, BLM private property owners and the Boundary County Sheriff.
Management Action(s): <ul style="list-style-type: none"> Consider using aircraft to check fire spread and conduct aerial work. Assess areas where ground forces, including equipment, can take action to limit fire spread to other properties. Assess the need for additional MAMs and fire behavior assessments.
Resources: Recommended: Agency Administrator, Heavy Equipment, i.e. Type 2 Helicopter, Type 1 Helicopter, Type 1 or 2 Helicopter, Type 1 or 2 Helicopter, Type 1 or 2 Helicopter.

Strategic Operations Planning

Kootenai River Complex

2022-IDIPF-000653

9/24/2022

21,574 acres as 9/23/22 2115

Acreage from IR

- Structures
- Other Property
- ⊡ Pump
- ⊡ Water Tank
- ⊡ Dip Site
- ⊡ Helispot
- ⊡ Helibase
- ⊡ Division Break
- ⊡ Incident Command Post
- ⊡ Drop Point
- ⊡ Camp
- ⊡ Lookout
- ⊡ Fire Origin
- ⊡ Value at Risk
- ⊡ Other
- ⊡ Gate
- ⊡ Bridge
- ⊡ Landing or Log Deck
- ⊡ Culvert
- ⊡ Mobile Weather Unit
- ⊡ Repeater
- ⊡ Safety Zone
- ⊡ Hazard
- ⊡ Water Source
- ⊡ Completed Dozer Line
- ⊡ Completed Fuel Break
- ⊡ Completed Hand Line
- ⊡ Completed Mixed Construction Line
- ⊡ Completed Road as Line
- ⊡ Planned Dozer Line
- ⊡ Planned Hand Line
- ⊡ Planned Road as Line
- ⊡ Access or Improved Road
- ⊡ Management Action Point
- ⊡ Aerial Hazard
- ⊡ Temporary Flight Restriction
- ⊡ Fire Edge (Field Collection)
- ⊡ Other
- ⊡ Wildfire Daily Fire Perimeter
- ⊡ Historic Fire Perimeters
- ⊡ Evacuation Areas (RSG)
- ⊡ Indian Reservation
- ⊡ American Indian Lands
- ⊡ Forest Service Land
- ⊡ State Public Lands
- ⊡ U.S. Fish Wildlife Service Lands
- ⊡ Bureau of Land Management National
- ⊡ BLM Farnham Forest RNA
- ⊡ RxBurns
- ⊡ Timber Sales

Russell Mountain
2022-IDIPF-000515
21245 Acres

Katka
2022-IDIPF-000629
326 Acres

EA Gold IMT
9/24/2022 0432
North American 1983 Datum, Lat/Long Grid