

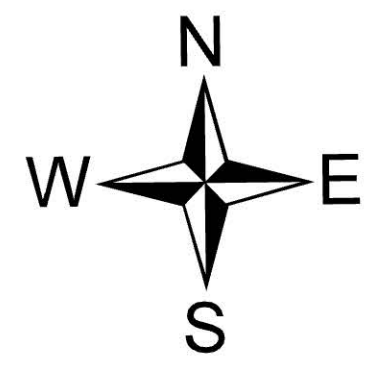
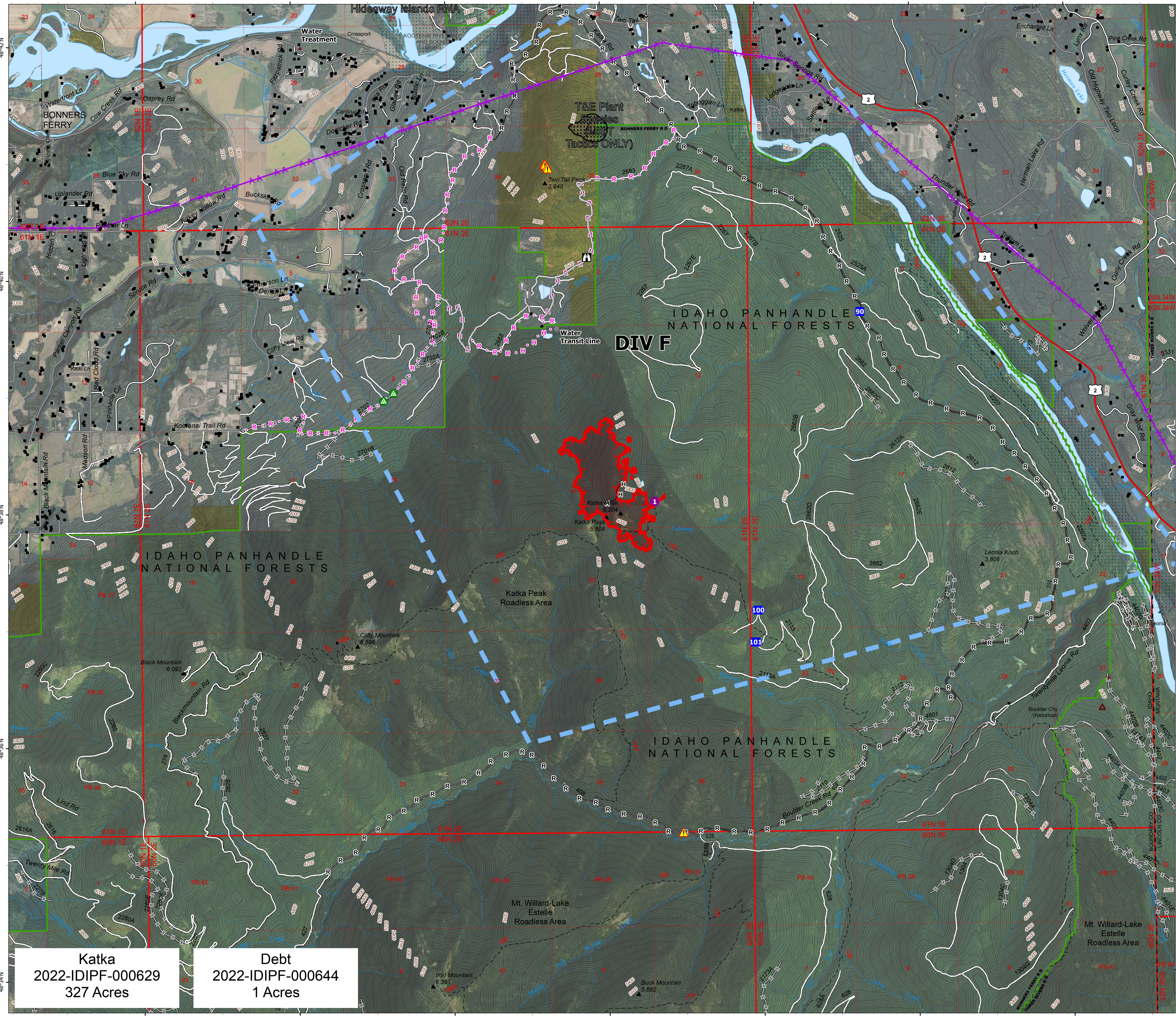
# Operations\_Ortho

South  
Kootenai River Complex  
2022-IDIPF-000653  
9/25/2022

21,692 acres at 9/24/22 1932  
Acres from IR



- Helispot
- Drop Point
- 👁 Lookout
- ⚠ Value at Risk
- ⬢ Other
- 🌳 Landing or Log Deck
- ⚠ Hazard
- Completed Hand Line
- Completed Road as Line
- Planned Hand Line
- Planned Road as Line
- Access or Improved Road
- Aerial Hazard
- Temporary Flight Restriction
- Other
- Wildfire Daily Fire Perimeter
- US Primary Route
- Paved Roads
- Dirt (Not Paved)
- Forest Service Land
- State Public Lands
- Bureau of Land Management Lands
- Idaho Structures



**Katka**  
2022-IDIPF-000629  
327 Acres

**Debt**  
2022-IDIPF-000644  
1 Acres

NR Team 4  
9/25/2022 07:29  
North American 1983 Datum, Lat/Long Grid