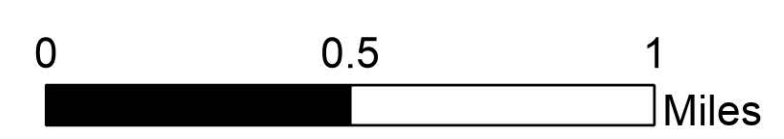


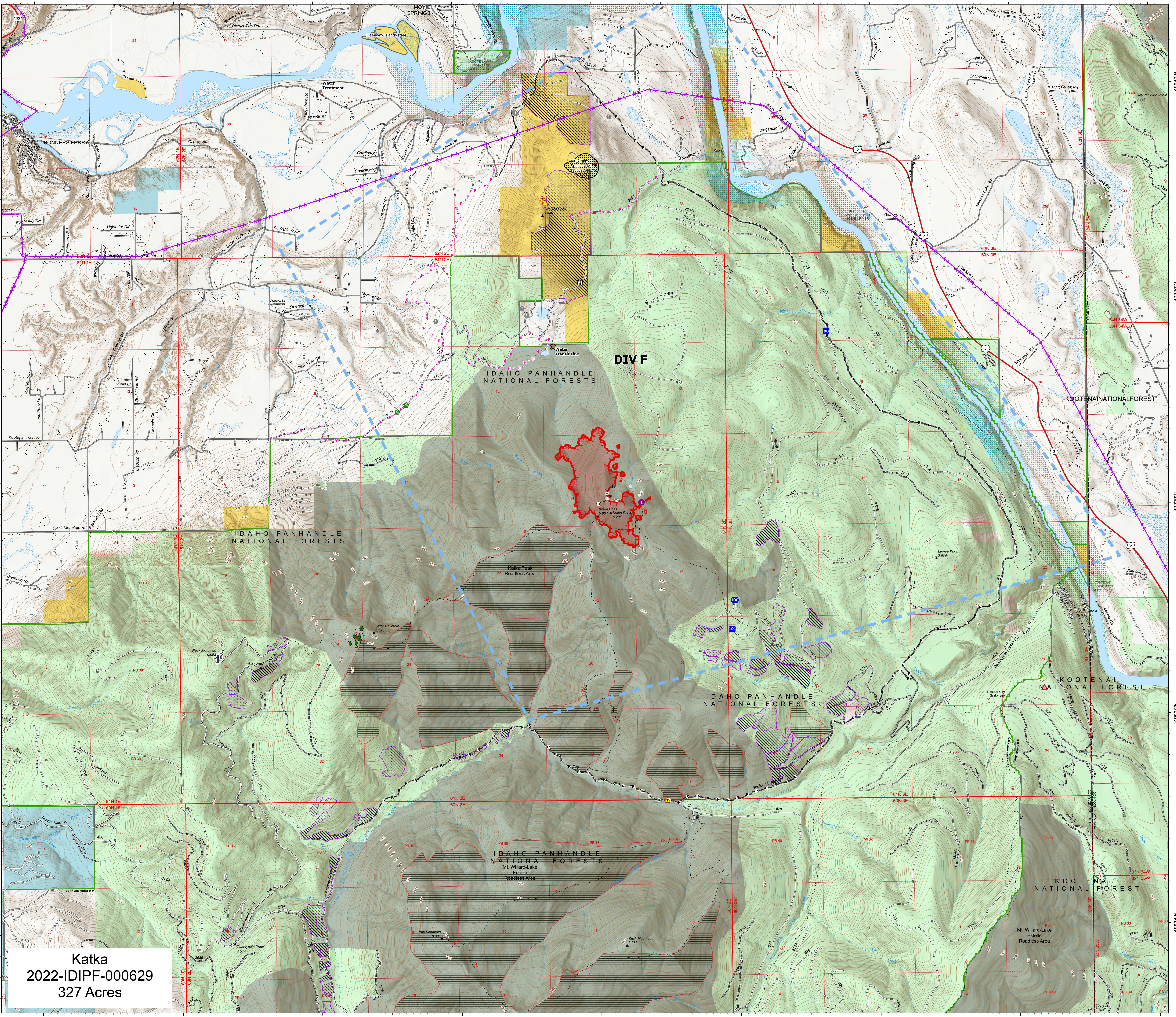
Operations South

Kootenai River Complex

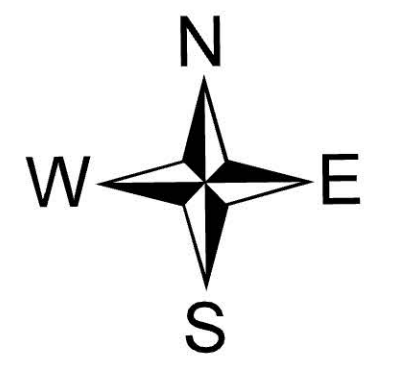
2022-IDIPF-000653
9/25/2022
21,692 acres at 9/24/22 1932
Acres from IR



- Helispot
- Drop Point
- Camp
- Lookout
- Value at Risk
- Other
- Landing or Log Deck
- Hazard
- Completed Hand Line
- Completed Road as Line
- Planned Hand Line
- Planned Road as Line
- Access or Improved Road
- Aerial Hazard
- Temporary Flight Restriction
- Other
- Wildfire Daily Fire Perimeter
- IR Heat Perimeter
- IR Intense Heat
- IR Scattered Heat
- US Primary Route
- Paved Roads
- Dirt (Not Paved)
- Indian Reservation
- American Indian Lands
- Forest Service Land
- State Public Lands
- Bureau of Land Management Lands
- Idaho Structures
- County Communications Site
- Water Trans Line
- Timber Sales
 - Two Tail Forest Health_Fuels Project
 - Black Boulder GNA Timber Sale
 - Boulder Dash Timber Sale
 - BoulderRxBurns
 - T&E plant habitat
 - WBP



EA Gold IMT
9/25/2022 0730
North American 1983 Datum, Lat/Long Grid



Katka
2022-IDIPF-000629
327 Acres