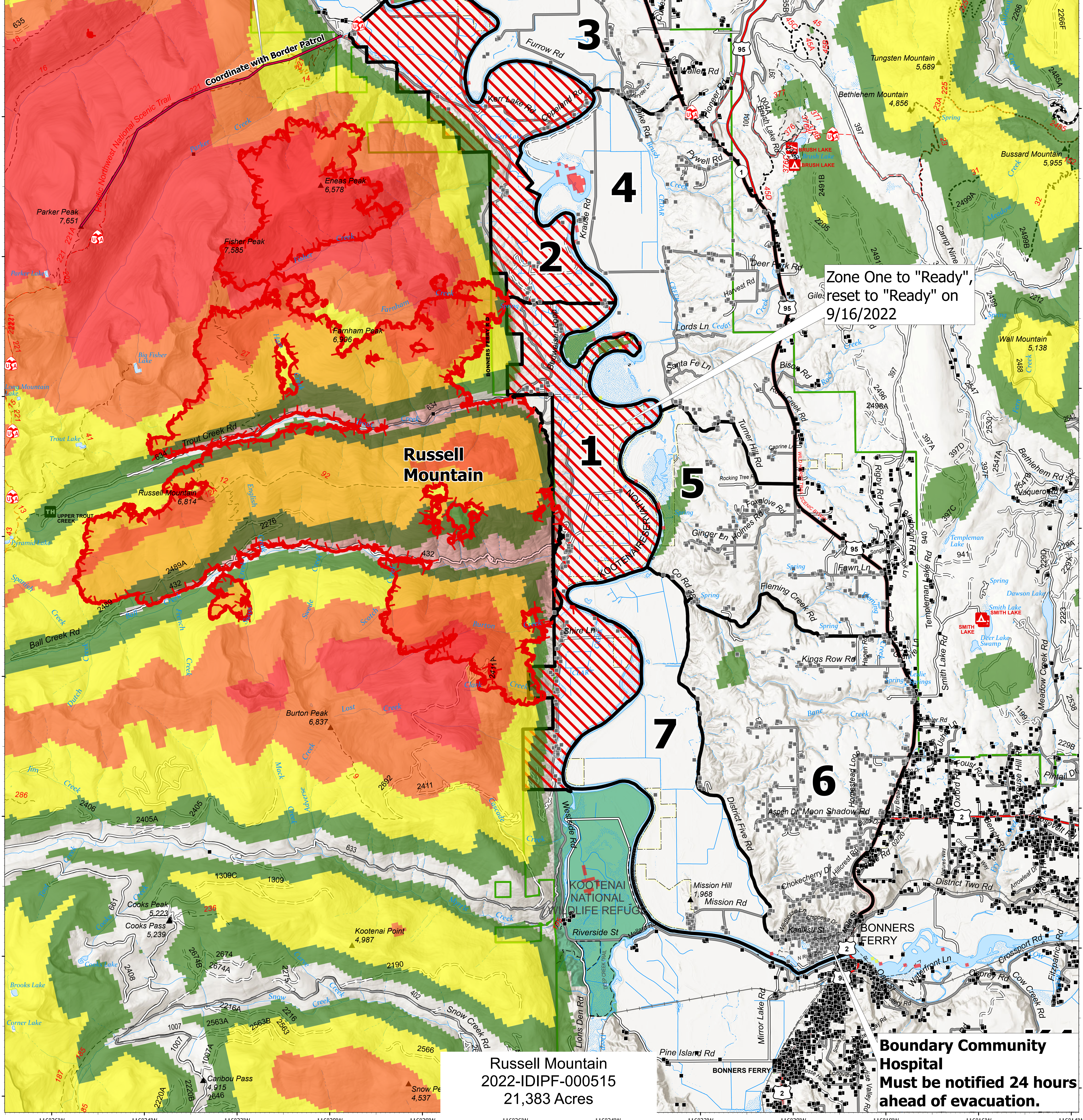


Trigger Points
 1. If Zone 2 goes into "SET" status.
 2. If the Fire reaches The Pacific North West National Scenic Trail.

If either of the above trigger points are met, the Board Patrol must be notified.



Zone One to "Ready",
 reset to "Ready" on
 9/16/2022

Russell Mountain
 2022-IDIPF-000515
 21,383 Acres

**Boundary Community
 Hospital
 Must be notified 24 hours
 ahead of evacuation.**

Ready, Set, Go

Kootenai River Complex
 2022-IDIPF-000653
 9/26/2022
 21,715 acres at 9/25/22 2032
 Acres from IR

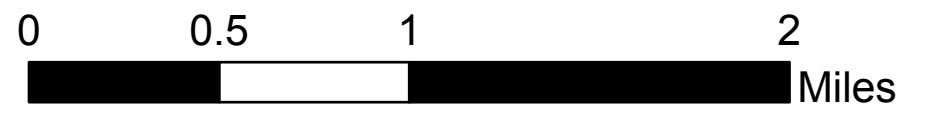
Evacuation Areas

- Ready
- Set
- Go
- Other Evacuation Areas

- Evacuation Area Structures
- Idaho Structures
- Wildfire Daily Fire Perimeter
- U.S. Fish Wildlife Service Lands

Est Ground Evacuation Tim

- 1 to 2 Hours
- 2 to 4 Hours
- 4 to 6 Hours
- More than 6 Hours



EA Gold IMT
 9/26/2022 0505
 North American 1983 Datum, LatLong Grid



Boundary County
 Emergency Management
 Public Information
 (208) 290-5316

Boundary County
 Sheriff's Office
 (208) 267-3151