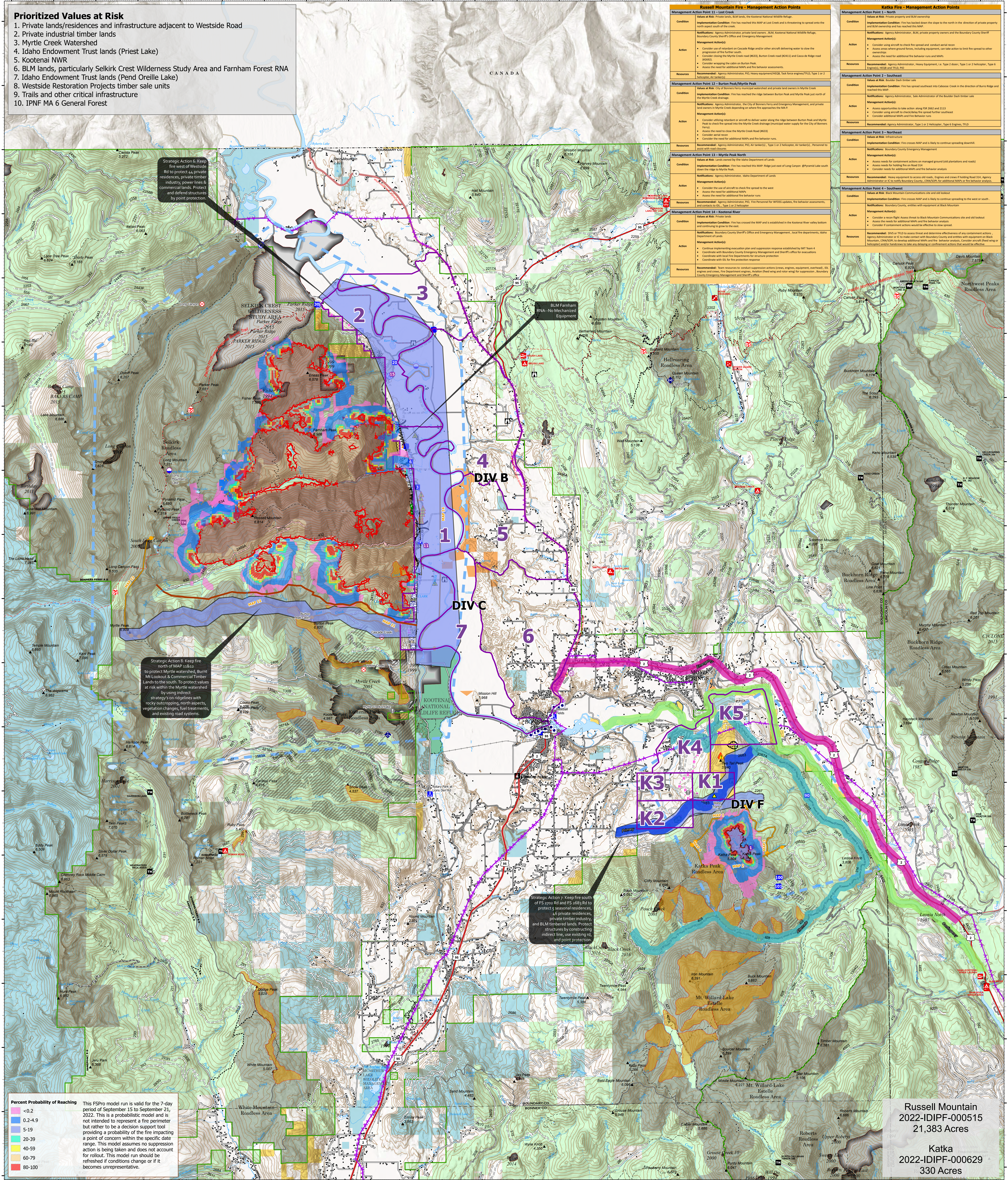


- ### Prioritized Values at Risk
1. Private lands/residences and infrastructure adjacent to Westside Road
  2. Private industrial timber lands
  3. Myrtle Creek Watershed
  4. Idaho Endowment Trust lands (Priest Lake)
  5. Kootenai NWR
  6. BLM lands, particularly Selkirk Crest Wilderness Study Area and Farnham Forest RNA
  7. Idaho Endowment Trust lands (Pend Oreille Lake)
  8. Westside Restoration Projects timber sale units
  9. Trails and other critical infrastructure
  10. IPNF MA 6 General Forest



#### Russell Mountain Fire - Management Action Points

Management Action Point 11 - Lost Creek
<b>Condition:</b> Viewed at Risk. Kootenai National Wildlife Refuge.
<b>Implementation Condition:</b> Fire has reached this MAP at Lost Creek and is threatening to spread onto the north-south side of the creek.
<b>Notification:</b> Agency Administrator, private land owners, BLM, Kootenai National Wildlife Refuge, Boundary County Sheriff's Office and Emergency Management.
<b>Management Action(s):</b> <ul style="list-style-type: none"> <li>Consider off-site location on Cascade Ridge and/or other critical adjoining water to slow the progression of the further south.</li> <li>Consider the use of aerial water drops (AWD), Burton Creek road (RSC) and Cascade Ridge road (RSC).</li> <li>Consider the use of aerial water drops (AWD) and Burton Peak.</li> <li>Assess the need for additional MAPs and the behavior analysis.</li> </ul>
<b>Resources:</b> Recommended: Agency Administrator, PWS Heavy equipment/HIGG, Tank force engine/TFD, Type 1 or 2 Helicopter, Type 1 or 2 Helicopter.

#### Katka Fire - Management Action Points

Management Action Point 3 - North
<b>Condition:</b> Viewed at Risk. Private property and BLM ownership.
<b>Implementation Condition:</b> Fire has backed down the slope to the north in the direction of private property and BLM ownership and has reached this MAP.
<b>Notification:</b> Agency Administrator, BLM, private property owners and the Boundary County Sheriff's Office.
<b>Management Action(s):</b> <ul style="list-style-type: none"> <li>Consider using aircraft to check fire spread and conduct aerial work.</li> <li>Assess areas where ground forces, including equipment, can take action to limit fire spread to other properties.</li> <li>Assess the need for additional MAPs and the behavior analysis.</li> </ul>
<b>Resources:</b> Recommended: Agency Administrator, Heavy Equipment, Type 1 or 2 Helicopter, Type 1 or 2 Helicopter, Type 1 or 2 Helicopter, Type 1 or 2 Helicopter.

## Strategic Operations Planning

### Kootenai River Complex

2022-IDIPF-000653

09/26/2022

21,715 acres as of 9/25/22 2032

Acres from IR

- Structures
- Other Property
- ⊕ Pump
- ⊕ Water Tank
- ⊕ Dip Site
- ⊕ Helibase
- ⊕ Division Break
- ⊕ Incident Command Post
- ⊕ Drop Point
- ⊕ Camp
- ⊕ Lookout
- ⊕ Fire Origin
- ⊕ Value at Risk
- ⊕ Other
- ⊕ Gate
- ⊕ Landing or Log Deck
- ⊕ Culvert
- ⊕ Mobile Weather Unit
- ⊕ Repeater
- ⊕ Safety Zone
- ⊕ Hazard
- ⊕ Water Source
- ⊕ Completed Dozer Line
- ⊕ Completed Fuel Break
- ⊕ Completed Hand Line
- ⊕ Completed Mixed Construction Line
- ⊕ Completed Road as Line
- ⊕ Planned Dozer Line
- ⊕ Planned Hand Line
- ⊕ Planned Road as Line
- ⊕ Access or Improved Road
- ⊕ Management Action Point
- ⊕ Aerial Hazard
- ⊕ Temporary Flight Restriction
- ⊕ Fire Edge (Field Collection)
- ⊕ Other
- ⊕ Wildfire Daily Fire Perimeter
- ⊕ Historic Fire Perimeters
- ⊕ Evacuation Areas (RSG)
- ⊕ American Indian Lands
- ⊕ Forest Service Land
- ⊕ State Public Lands
- ⊕ U.S. Fish Wildlife Service Lands
- ⊕ Bureau of Land Management Lands
- ⊕ BLM Farnham Forest RNA

#### Russell Mountain

2022-IDIPF-000515

21,383 Acres

#### Katka

2022-IDIPF-000629

330 Acres

EA Gold IMT  
09/26/2022 0535  
North American 1983 Datum, Lat/Long Grid