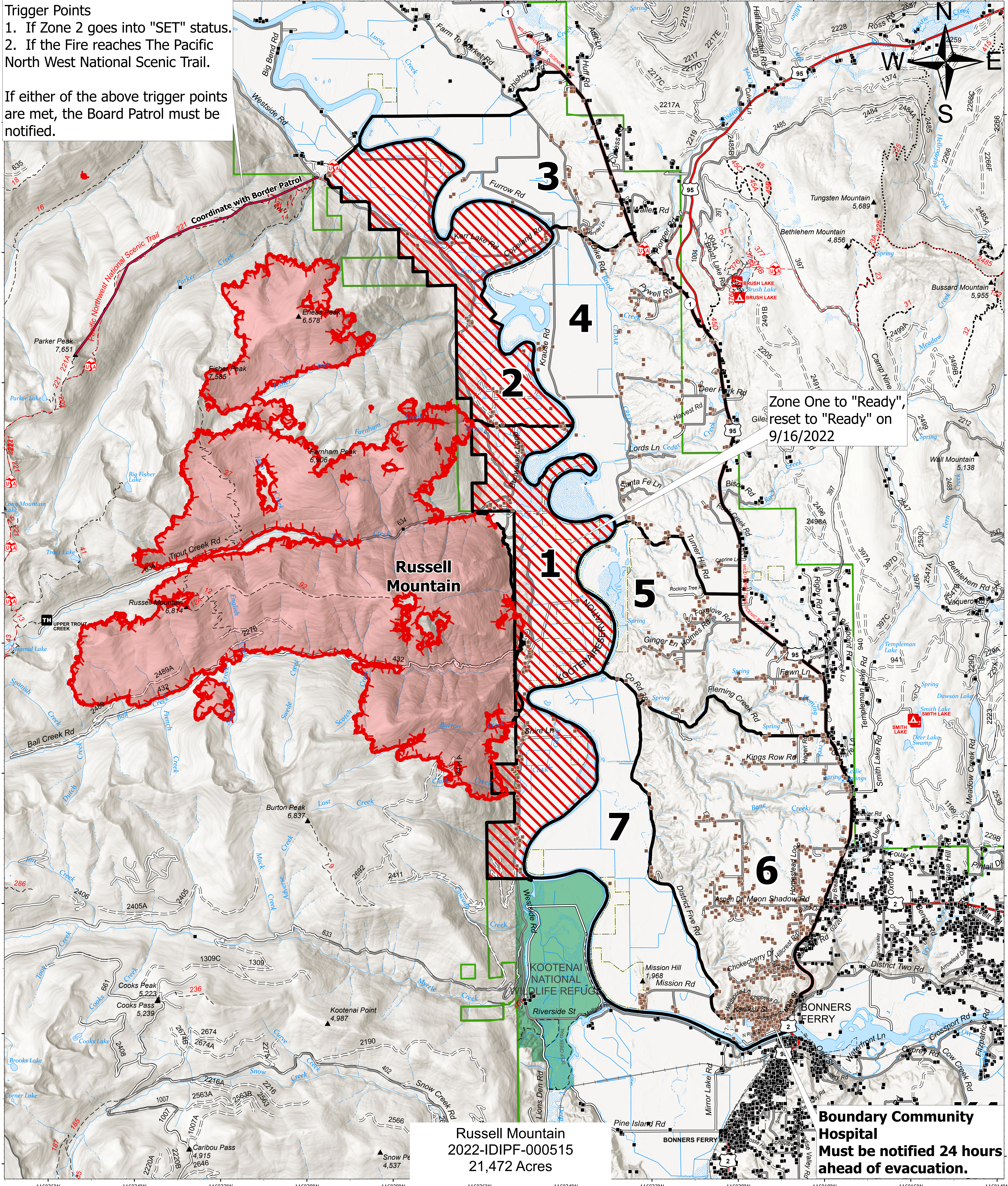


Trigger Points
 1. If Zone 2 goes into "SET" status.
 2. If the Fire reaches The Pacific North West National Scenic Trail.

If either of the above trigger points are met, the Board Patrol must be notified.



Russell Mountain
 2022-IDIPF-000515
 21,472 Acres

Zone One to "Ready",
 reset to "Ready" on
 9/16/2022

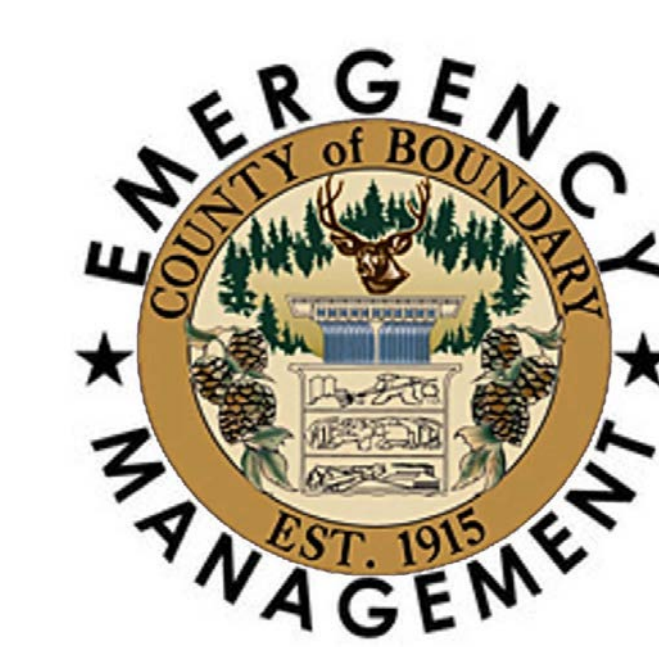
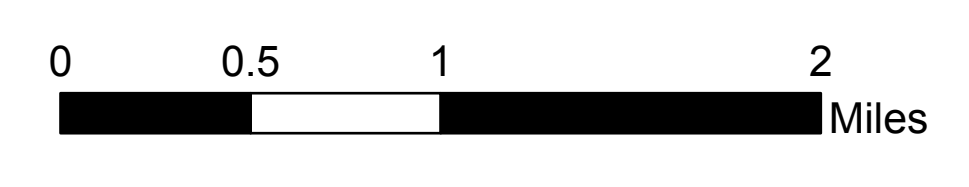
Boundary Community Hospital
 Must be notified 24 hours
 ahead of evacuation.

Ready, Set, Go
 North

Kootenai River Complex
 2022-IDIPF-000653
 9/27/2022
 21,808 acres at 9/26/22 1913
 Acres from IR

- Evacuation Areas**
- Ready
 - Set
 - Go
 - Other Evacuation Areas

- Evacuation Area Structures
- Idaho Structures
- Wildfire Daily Fire Perimeter
- Administrative FS Boundary
- U.S. Fish Wildlife Service Lands



Boundary County
 Emergency Management
 Public Information
 (208) 290-5316

EA Gold IMT
 9/27/2022 04:49
 North American 1983 Datum, Lat/Long Grid

Boundary County
 Sheriff's Office
 (208)267-3151