

- ### Prioritized Values at Risk
1. Private lands/residences and infrastructure adjacent to Westside Road
  2. Private industrial timber lands
  3. Myrtle Creek Watershed
  4. Idaho Endowment Trust lands (Priest Lake)
  5. Kootenai NWR
  6. BLM lands, particularly Selkirk Crest Wilderness Study Area and Farnham Forest RNA
  7. Idaho Endowment Trust lands (Pend Oreille Lake)
  8. Westside Restoration Projects timber sale units
  9. Trails and other critical infrastructure
  10. IPNF MA 6 General Forest

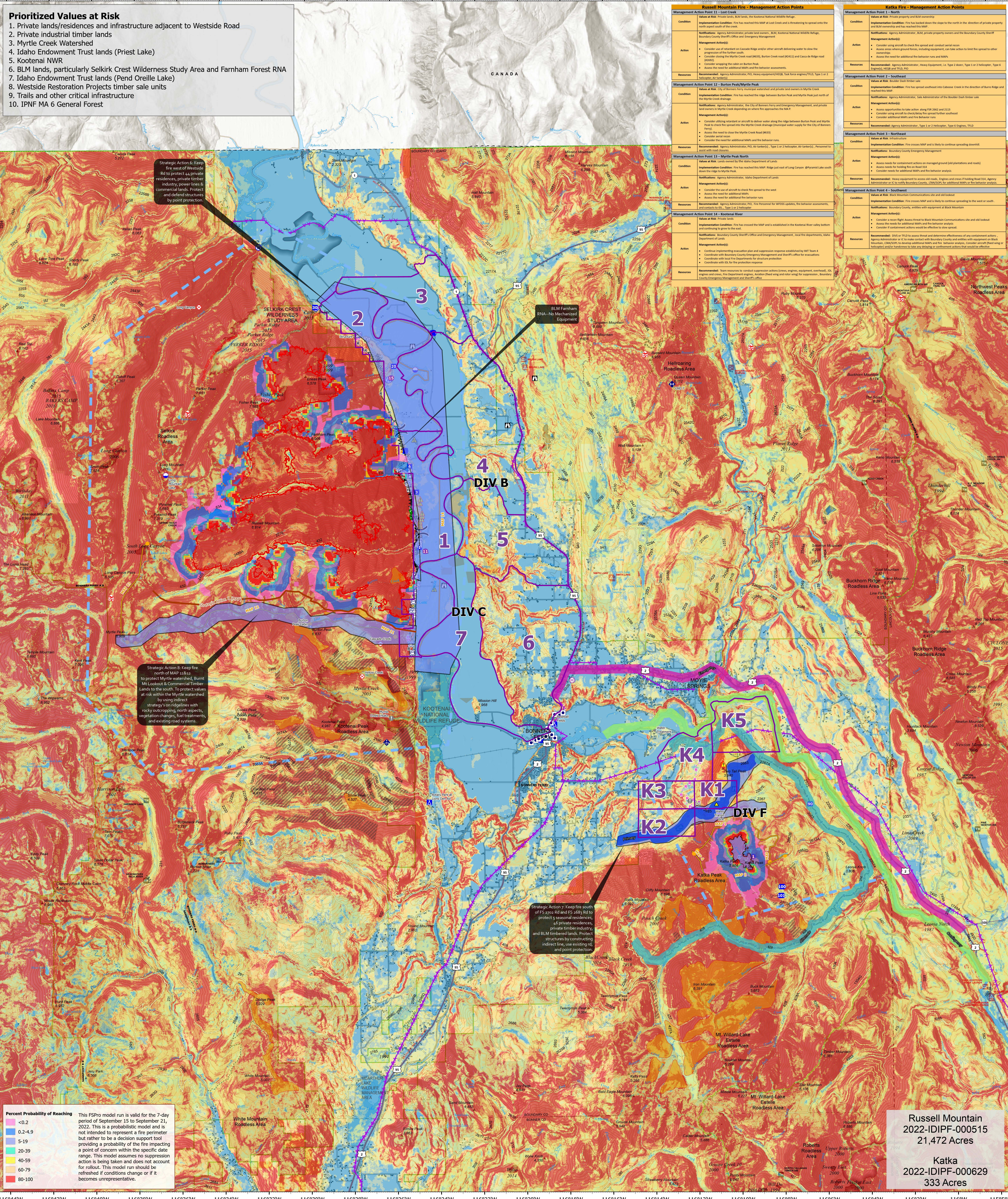
Strategic Action 6: Keep fire west of Westside Rd to protect private residences, private timber, industry, power lines & commercial lands. Protect and defend structures by point protection.

Strategic Action 8: Keep fire north of MAP 21822 to protect Myrtle watershed, Burnt Mt Lookout & Commercial Timber Lands to the south. To protect values at risk within the Myrtle watershed by using indirect strategy's on ridgelines with rocky outcroppings, north aspects, vegetation changes, fuel treatments, and existing road systems.

Strategic Action 7: Keep fire south of FS 2702 Rd and FS 2683 Rd to protect seasonal residences, 46 private residences, private timber industry, and BLM timbered lands. Protect structures by constructing indirect line, use existing rd, and point protection.

Russell Mountain Fire - Management Action Points	
<b>Management Action Point 11 - Lost Creek</b>	<p><b>Condition:</b> Values at Risk: Private lands, BLM lands, the Kootenai National Wildlife Refuge.</p> <p><b>Implementation Condition:</b> Fire has reached this MAP at Lost Creek and is threatening to spread onto the north aspect south of the creek.</p> <p><b>Management Action(s):</b></p> <ul style="list-style-type: none"> <li>Consider use of retardant on Cascade Ridge and/or other aircraft delivering water to slow the progression of fire further south.</li> <li>Consider using the cable on Burton Peak.</li> <li>Consider using the cable on Burton Peak.</li> <li>Assess the need for additional MAMs and fire behavior assessments.</li> </ul> <p><b>Resources:</b> Recommended: Agency Administrator, P25 Heavy equipment/HIGR, Tank force engine/TFD, Type 1 or 2 helicopter, etc.</p>
<b>Management Action Point 12 - Burton Peak/Myrtle Peak</b>	<p><b>Values at Risk:</b> City of Bonners Ferry municipal watershed and private land owners in Myrtle Creek.</p> <p><b>Implementation Condition:</b> Fire has reached the ridge between Burton Peak and Myrtle Peak just north of the Myrtle Creek drainage.</p> <p><b>Management Action(s):</b></p> <ul style="list-style-type: none"> <li>Consider utilizing retardant or aircraft to deliver water along the ridge between Burton Peak and Myrtle Peak to check the spread into the Myrtle Creek drainage management water supply for the City of Bonners Ferry.</li> <li>Assess the need to close the Myrtle Creek Road (MCR).</li> <li>Consider aerial retardant.</li> <li>Consider the need for additional MAMs and fire behavior units.</li> </ul> <p><b>Resources:</b> Recommended: Agency Administrator, P25 Air tanker(s), Type 1 or 2 helicopter, Air tanker(s), Personnel to assist with road closures.</p>
<b>Management Action Point 13 - Myrtle Peak South</b>	<p><b>Values at Risk:</b> Lands owned by the Idaho Department of Lands.</p> <p><b>Implementation Condition:</b> Fire has reached this MAP: Ridge just east of Long Canyon. @Myrtle Lake south of the ridge to Myrtle Peak.</p> <p><b>Management Action(s):</b></p> <ul style="list-style-type: none"> <li>Consider the use of aircraft to check fire spread to the west.</li> <li>Assess the need for additional MAMs.</li> <li>Assess the need for additional MAMs and fire behavior units.</li> </ul> <p><b>Resources:</b> Recommended: Agency Administrator, P25 Fire Personnel for WIGOs, updates, fire behavior assessments, and contacts to the City of Bonners Ferry.</p>
<b>Management Action Point 14 - Kootenai River</b>	<p><b>Values at Risk:</b> Private lands.</p> <p><b>Implementation Condition:</b> Fire has crossed the MAP and is established in the Kootenai River valley bottom and continuing to grow to the east.</p> <p><b>Management Action(s):</b></p> <ul style="list-style-type: none"> <li>Continue improving evacuation plan and suppression response established by MFL Team 4.</li> <li>Coordinate with local fire departments for structure protection.</li> <li>Coordinate with local fire prevention resources.</li> </ul> <p><b>Resources:</b> Recommended: Team resources to conduct suppression actions (crew, engine, equipment, overhaul, etc) engine and crew. The Department engine, Aerial (hand wing and rotor wing) for suppression, Boundary County Emergency Management and Sheriff's office.</p>

Kalka Fire - Management Action Points	
<b>Management Action Point 1 - North</b>	<p><b>Condition:</b> Values at Risk: Private property and BLM ownership.</p> <p><b>Implementation Condition:</b> Fire has backed down the slope to the north in the direction of private property and BLM ownership and has reached this MAP.</p> <p><b>Management Action(s):</b></p> <ul style="list-style-type: none"> <li>Consider using aircraft to check fire spread and conduct aerial retardant.</li> <li>Assess areas where ground forces, including equipment, can take action to limit fire spread to other structures.</li> <li>Assess the need for additional MAMs and fire behavior units.</li> </ul> <p><b>Resources:</b> Recommended: Agency Administrator, Heavy Equipment, Type 2, Type 1 or 2 helicopter, Type 1 helicopter, etc.</p>
<b>Management Action Point 2 - Southeast</b>	<p><b>Values at Risk:</b> Boulder Creek timber sale.</p> <p><b>Implementation Condition:</b> Fire has spread southeast into Cascade Creek in the direction of Burnt Ridge and reached this MAP.</p> <p><b>Management Action(s):</b></p> <ul style="list-style-type: none"> <li>Assess opportunities to take action along FS 2663 and 2113.</li> <li>Consider using aircraft to check fire spread to the east.</li> <li>Consider additional MAMs and fire behavior units.</li> </ul> <p><b>Resources:</b> Recommended: Agency Administrator, Type 1 or 2 helicopter, Type 1, Type 2 helicopter, etc.</p>
<b>Management Action Point 3 - Northeast</b>	<p><b>Condition:</b> Values at Risk: Private lands.</p> <p><b>Implementation Condition:</b> Fire crosses MAP and is likely to continue spreading eastward.</p> <p><b>Management Action(s):</b></p> <ul style="list-style-type: none"> <li>Assess opportunities to take action along FS 2663 and 2113.</li> <li>Consider using aircraft to check fire spread to the east.</li> <li>Consider additional MAMs and fire behavior units.</li> </ul> <p><b>Resources:</b> Recommended: Agency Administrator, Type 1 or 2 helicopter, Type 1, Type 2 helicopter, etc.</p>
<b>Management Action Point 4 - Southwest</b>	<p><b>Values at Risk:</b> BLM National Communications site and old school.</p> <p><b>Implementation Condition:</b> Fire crosses MAP and is likely to continue spreading to the west or south.</p> <p><b>Management Action(s):</b></p> <ul style="list-style-type: none"> <li>Consider a crew flight assess threat to Black Mountain Communications site and old school.</li> <li>Assess the need for additional MAMs and fire behavior units.</li> <li>Consider if containment actions would be effective to slow spread.</li> </ul> <p><b>Resources:</b> Recommended: OIGS or ITD to assess threat and determine effectiveness of any containment actions, Agency Administrator or IC to make contact with Boundary County and entities with equipment or Black Mountain, IDANGIS to develop additional MAMs and fire behavior analysis, Consider aircraft (hand wing or helicopter) and/or helicopters to take any structure or containment actions that would be effective.</p>



**Percent Probability of Reaching**

Light Pink	<0.2
Light Blue	0.2-4.9
Light Green	5-19
Light Yellow	20-39
Yellow	40-59
Orange	60-79
Red	80-100

This FSPro model run is valid for the 7-day period of September 15 to September 21, 2022. This is a probabilistic model and is not intended to represent a fire perimeter but rather to be a decision support tool providing a probability of the fire impacting a point of concern within the specific date range. This model assumes no suppression action is being taken and does not account for rollout. This model run should be refreshed if conditions change or if it becomes unrepresentative.

**Russell Mountain**  
2022-IDIPF-000515  
21,472 Acres

**Kalka**  
2022-IDIPF-000629  
333 Acres

## Strategic Operations Planning

**Kootenai River Complex**  
2022-IDIPF-000653  
9/27/2022  
21,808 acres as 9/26/22 1913  
Acres from IR

- |  |   |  |  |   |
|--|---|--|--|---|
| <ul style="list-style-type: none"> <li>■ Structures</li> <li>□ Other Property</li> <li>⊕ Pump</li> <li>⊕ Water Tank</li> <li>⊕ Dip Site</li> <li>⊕ Helibase</li> <li>⊕ Helibase</li> <li>⊕ Division Break</li> <li>⊕ Incident Command Post</li> <li>⊕ Drop Point</li> <li>⊕ Camp</li> <li>⊕ Lookout</li> </ul> | <ul style="list-style-type: none"> <li>⊕ Fire Origin</li> <li>⊕ Value at Risk</li> <li>⊕ Other</li> <li>⊕ Gate</li> <li>⊕ Landing or Log Deck</li> <li>⊕ Culvert</li> <li>⊕ Mobile Weather Unit</li> <li>⊕ Repeater</li> <li>⊕ Safety Zone</li> <li>⊕ Hazard</li> <li>⊕ Water Source</li> </ul> | <ul style="list-style-type: none"> <li>⊕ Completed Dozer Line</li> <li>⊕ Completed Fuel Break</li> <li>⊕ Completed Hand Line</li> <li>⊕ Completed Mixed Construction Line</li> <li>⊕ Completed Road as Line</li> <li>⊕ Planned Dozer Line</li> <li>⊕ Planned Hand Line</li> <li>⊕ Planned Road as Line</li> <li>⊕ Access or Improved Road</li> <li>⊕ Management Action Point</li> <li>⊕ Aerial Hazard</li> <li>⊕ Temporary Flight Restriction</li> </ul> | <ul style="list-style-type: none"> <li>⊕ Fire Edge (Field Collection)</li> <li>⊕ Wildfire Daily Fire Perimeter</li> <li>⊕ Historic Fire Perimeters</li> <li>⊕ Evacuation Areas (RSG)</li> <li>⊕ American Indian Lands</li> <li>⊕ Forest Service Land</li> <li>⊕ State Public Lands</li> <li>⊕ U.S. Fish Wildlife Service Lands</li> <li>⊕ Bureau of Land Management Lands</li> <li>⊕ BLM Farnham Forest RNA</li> <li>⊕ Rx Burns</li> </ul> | <ul style="list-style-type: none"> <li>⊕ Timber Sales</li> <li>⊕ Strategic Line (PACE) <ul style="list-style-type: none"> <li>Primary</li> <li>Alternate</li> <li>Contingency</li> <li>Emergency</li> <li>Strategic Action</li> </ul> </li> <li>⊕ Critical Value at Risk Point <ul style="list-style-type: none"> <li>Moderate</li> </ul> </li> </ul> |
|--|---|--|--|---|



EA Gold IMT  
9/27/2022 04:31  
North American 1983 Datum, Lat/Long Grid