

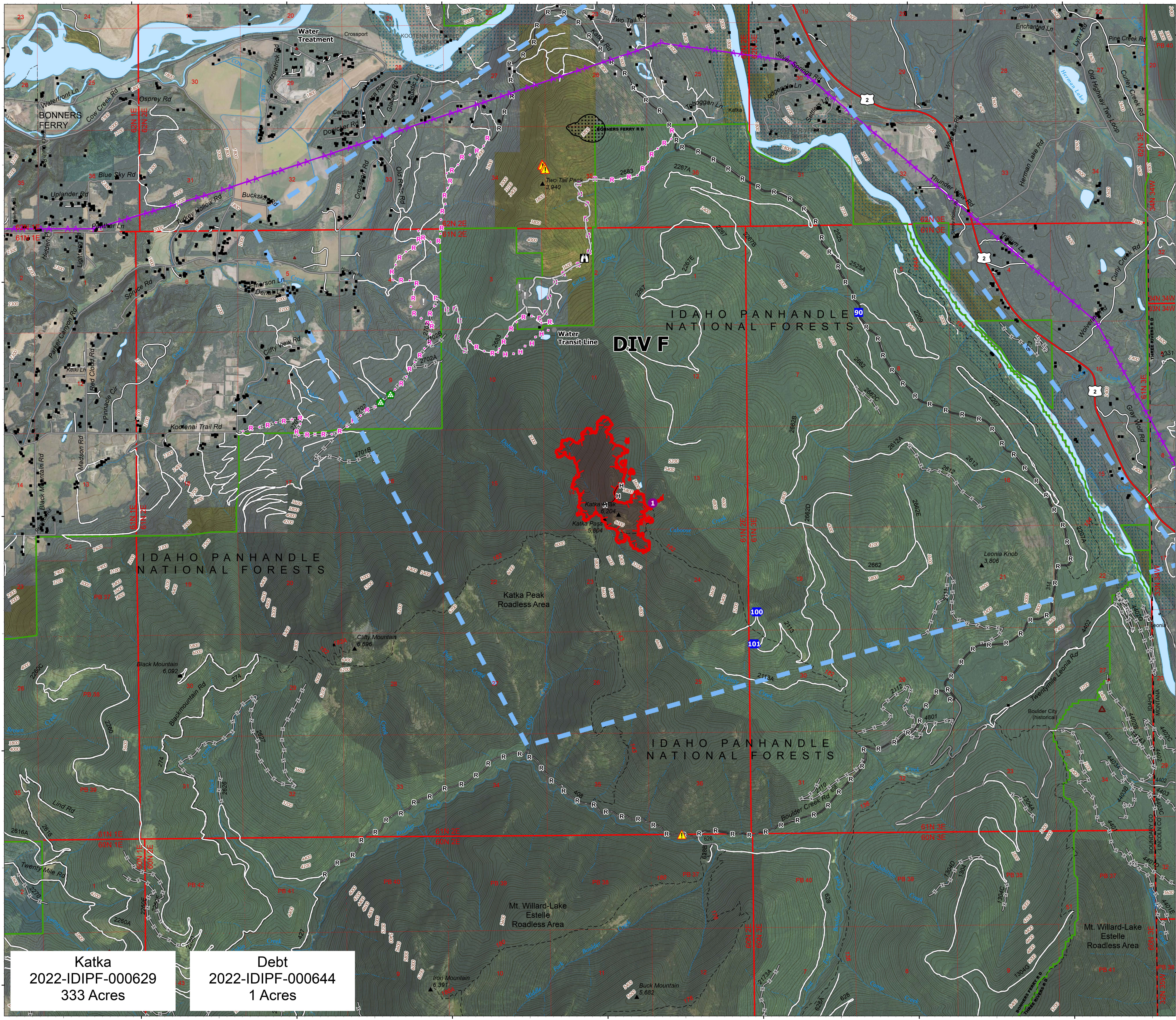
Operations_Ortho

South
Kootenai River Complex
2022-IDIPF-000653
9/27/2022

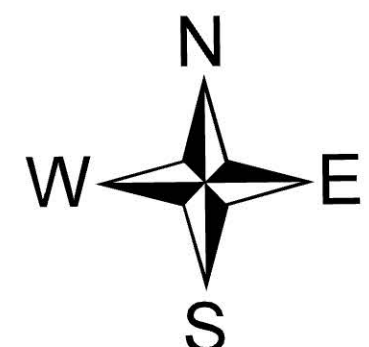
21,808 acres at 9/26/22 1913
Acres from IR



- Helispot
- Drop Point
- 👁 Lookout
- ⚠ Value at Risk
- ⬢ Other
- 🌲 Landing or Log Deck
- ⚠ Hazard
- Completed Hand Line
- Completed Road as Line
- Planned Hand Line
- Planned Road as Line
- Access or Improved Road
- Aerial Hazard
- Temporary Flight Restriction
- Wildfire Daily Fire Perimeter
- US Primary Route
- Paved Roads
- Dirt (Not Paved)
- Forest Service Land
- State Public Lands
- Bureau of Land Management Lands
- Idaho Structures



NR Team 4
9/27/2022 0429
North American 1983 Datum, Lat/Long Grid



Katka
2022-IDIPF-000629
333 Acres

Debt
2022-IDIPF-000644
1 Acres

116°16'W 116°14'W 116°12'W 116°10'W 116°8'W 116°6'W 116°4'W

48°42'N
48°40'N
48°38'N
48°36'N
48°34'N

48°42'N
48°40'N
48°38'N
48°36'N
48°34'N