

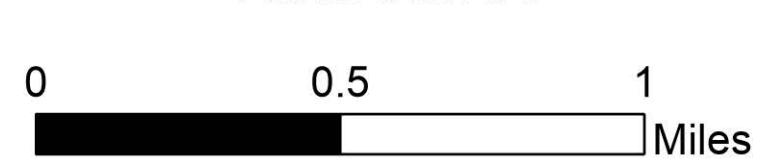
Operations South

Kootenai River Complex

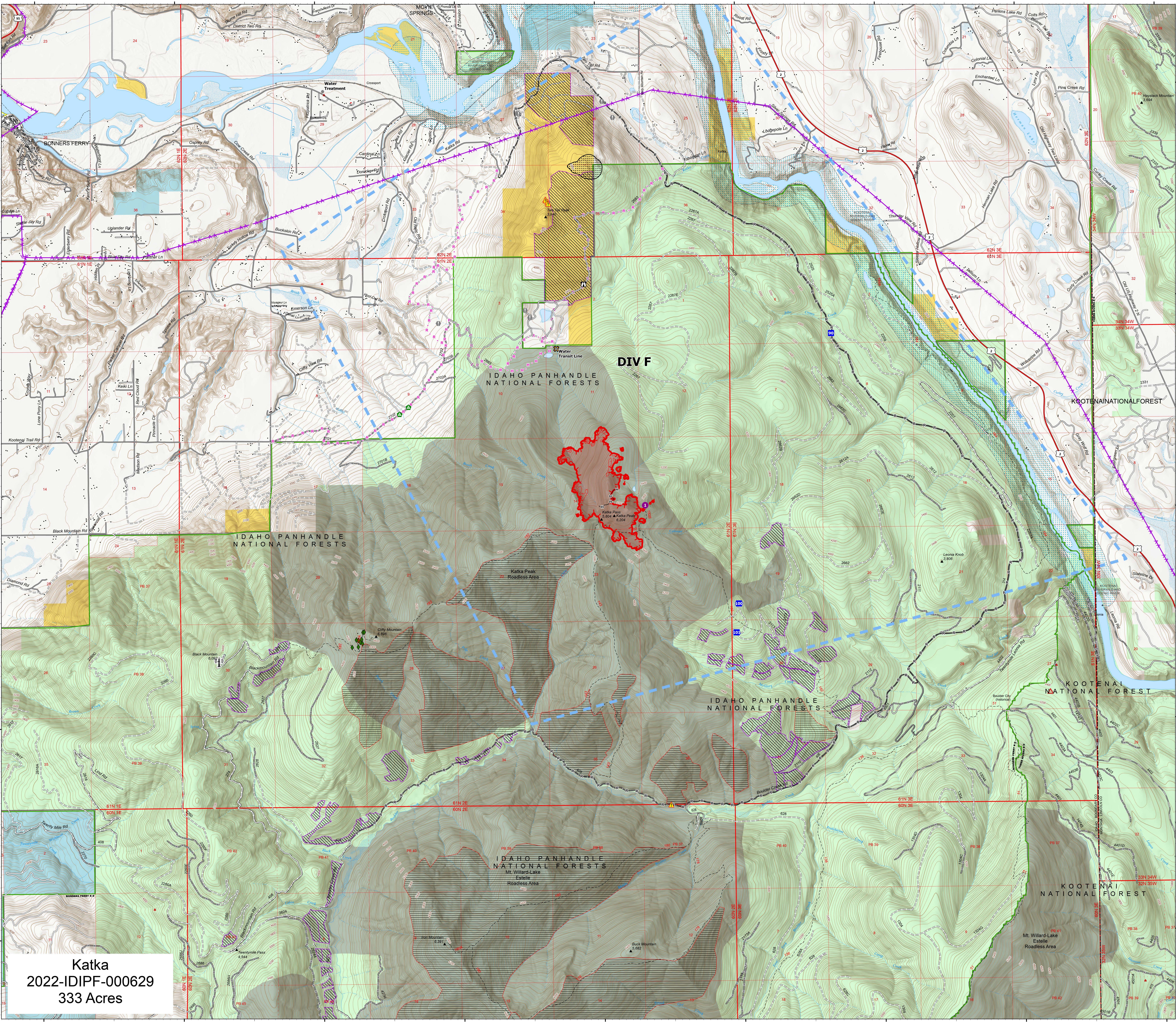
2022-IDIPF-000653

9/27/2022

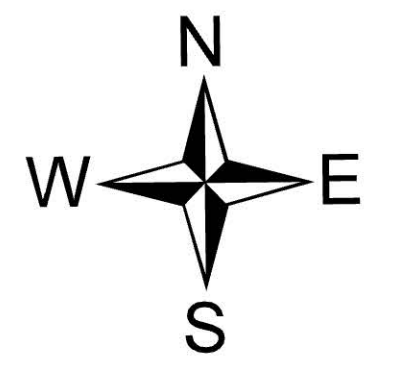
21,808 acres at 9/26/22 1913
Acres from IR



- Helispot
- Drop Point
- ▲ Camp
- ▲ Lookout
- ⚠ Value at Risk
- Other
- ▲ Landing or Log Deck
- ▲ Hazard
- Completed Hand Line
- Completed Road as Line
- Planned Hand Line
- Planned Road as Line
- Access or Improved Road
- Aerial Hazard
- Temporary Flight Restriction
- Wildfire Daily Fire Perimeter
- IR Heat Perimeter
- IR Intense Heat
- IR Scattered Heat
- US Primary Route
- Paved Roads
- Dirt (Not Paved)
- Indian Reservation
- American Indian Lands
- Forest Service Land
- State Public Lands
- Bureau of Land Management Lands
- Idaho Structures
- 📡 County Communications Site
- ✂ Water Trans Line
- Timber Sales
 - ▨ Two Tail Forest Health_Fuels Project
 - ▨ Black Boulder GNA Timber Sale
 - ▨ Boulder Dash Timber Sale
 - ▨ BoulderRxBurns
 - ▨ T&E plant habitat
 - ◆ WBP



Katka
2022-IDIPF-000629
333 Acres



EA Gold IMT
9/27/2022 0430
North American 1983 Datum, Lat/Long Grid