

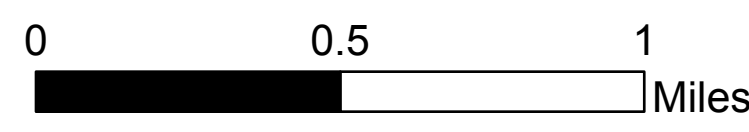
Briefing South

Kootenai River Complex

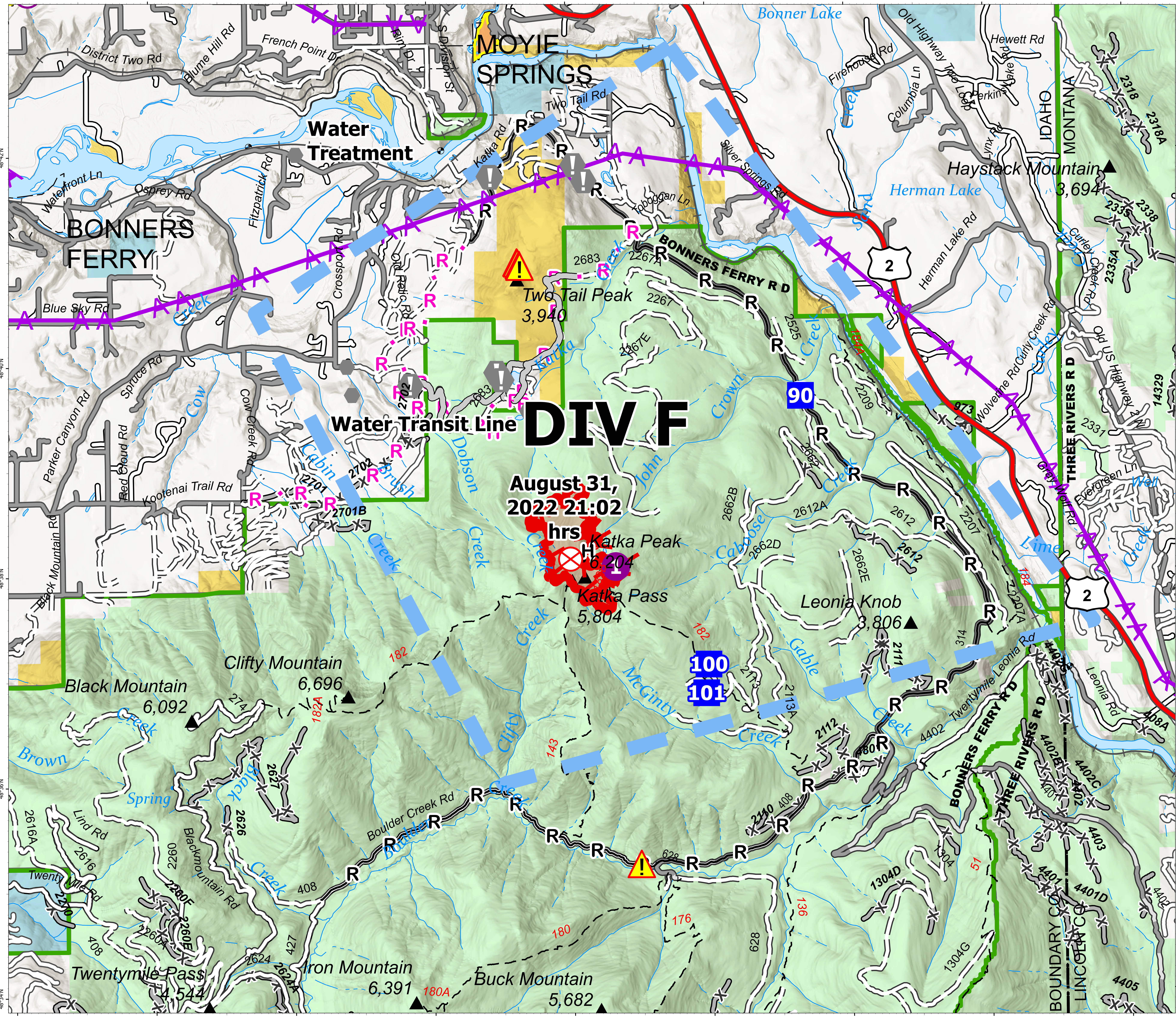
2022-IDIPF-000653

9/29/2022

22,482 acres at 9/28/22 1921
Acres from IR

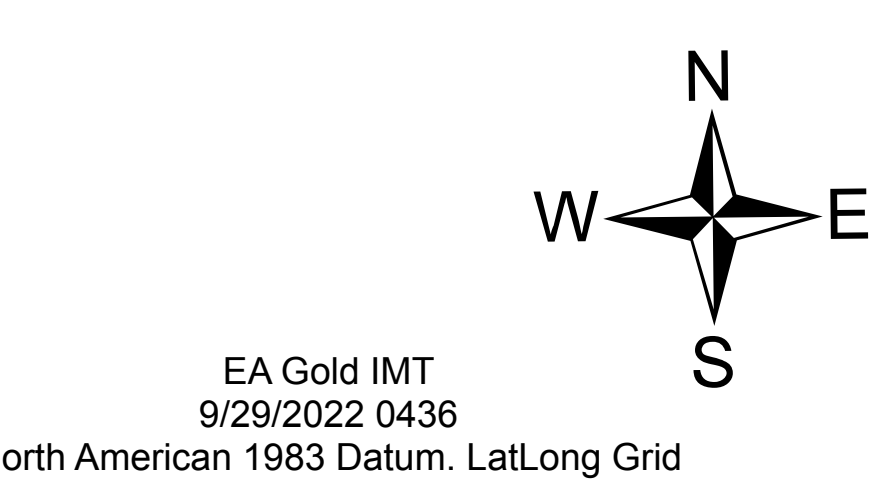


- Helispot
- ⊕ Helibase
- Drop Point
- ▲ Camp
- ⊗ Fire Origin
- ⚠ Value at Risk
- Other
- ▲ Hazard
- H- Completed Hand Line
- R- Completed Road as Line
- H- Planned Hand Line
- R- Planned Road as Line
- Access or Improved Road
- - Aerial Hazard
- ▭ Temporary Flight Restriction
- ▭ Wildfire Daily Fire Perimeter
- US Primary Route
- Paved Roads
- Dirt (Not Paved)
- American Indian Lands
- Forest Service Land
- State Public Lands
- Bureau of Land Management Lands
- Indian Reservation



DIV F

August 31,
2022 21:02
hrs



EA Gold IMT
9/29/2022 0436
North American 1983 Datum, Lat/Long Grid