

Operations_Ortho

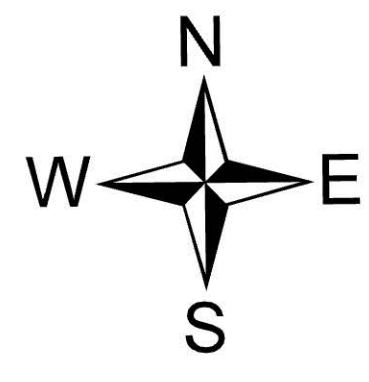
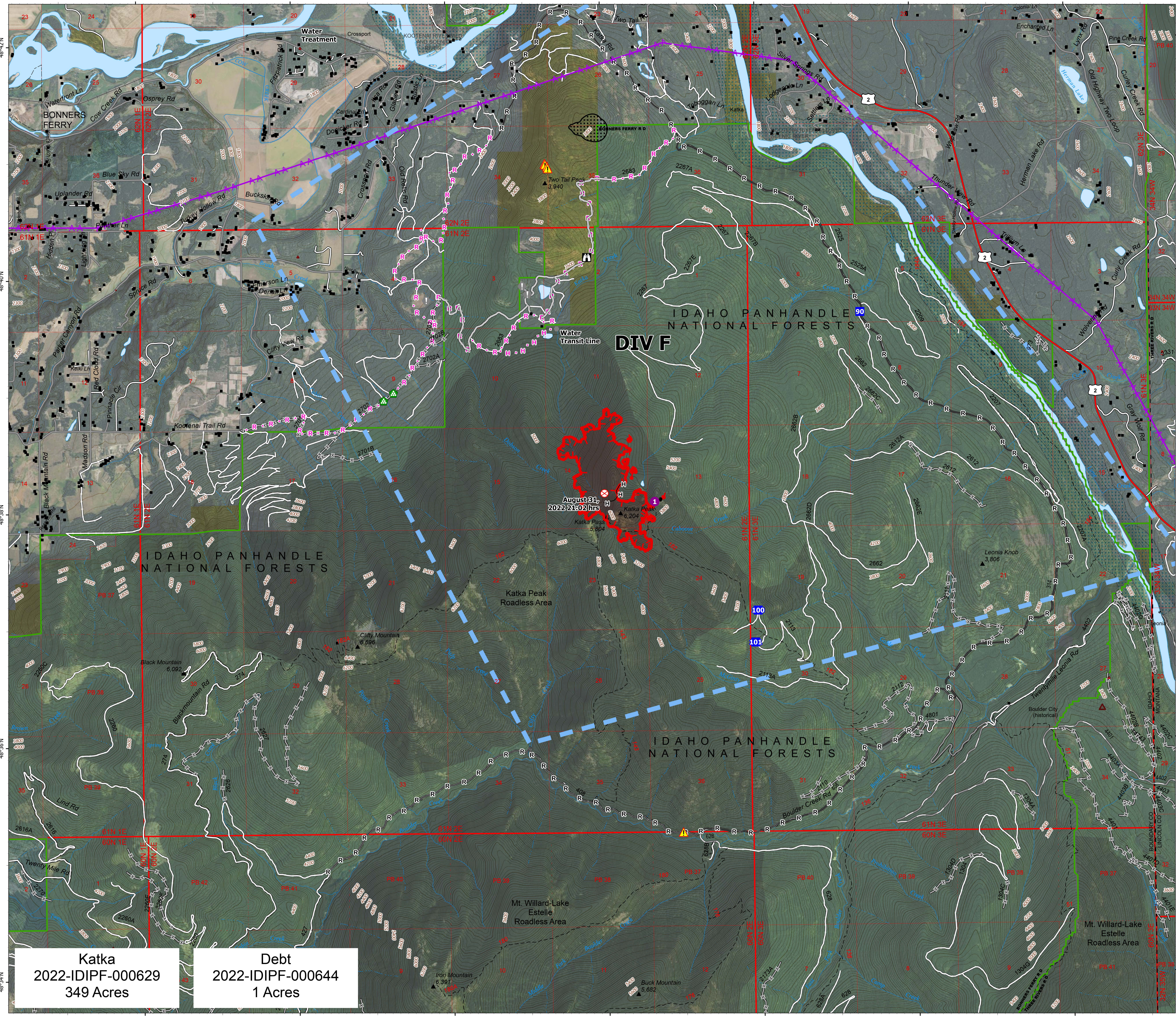
South

Kootenai River Complex

2022-IDIPF-000653
9/29/2022
22,482 acres at 9/28/22 1921
Acres from IR



- Helispot
- Drop Point
- Lookout
- Fire Origin
- Value at Risk
- Other
- Landing or Log Deck
- Hazard
- Completed Hand Line
- Completed Road as Line
- Planned Hand Line
- Planned Road as Line
- Access or Improved Road
- Aerial Hazard
- Temporary Flight Restriction
- Wildfire Daily Fire Perimeter
- US Primary Route
- Paved Roads
- Dirt (Not Paved)
- Forest Service Land
- State Public Lands
- Bureau of Land Management Lands
- Idaho Structures



Katka
2022-IDIPF-000629
349 Acres

Debt
2022-IDIPF-000644
1 Acres