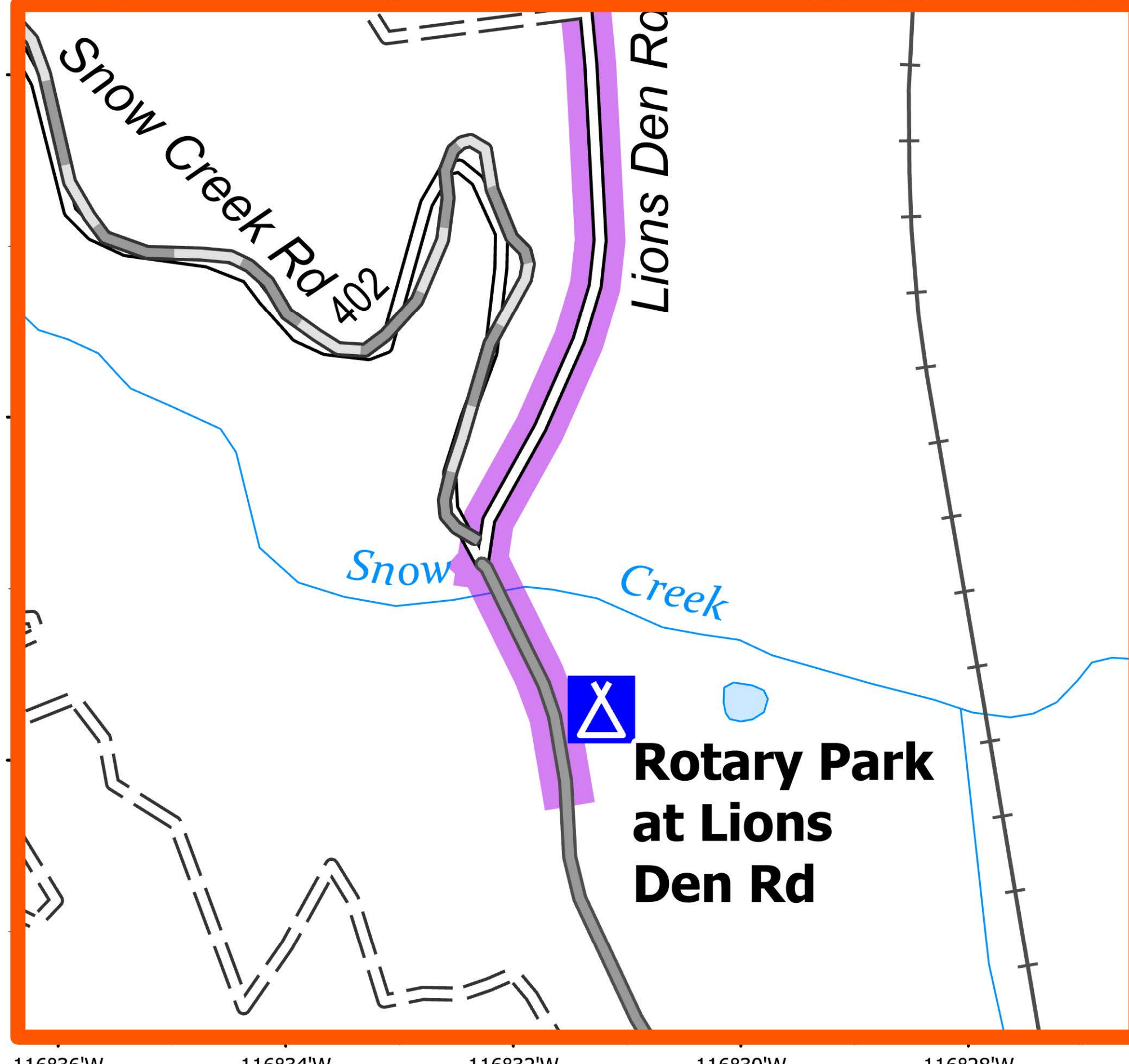
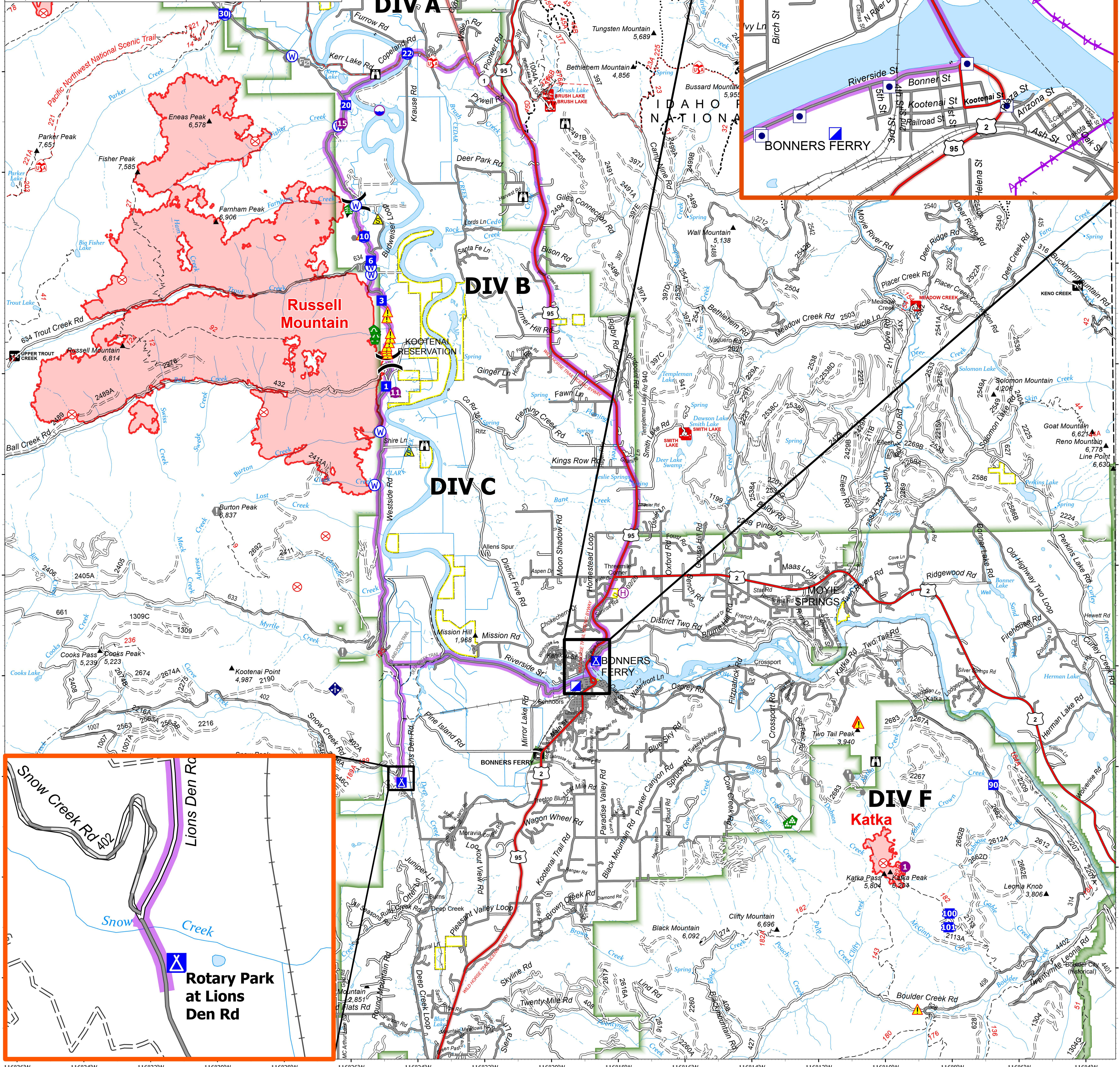
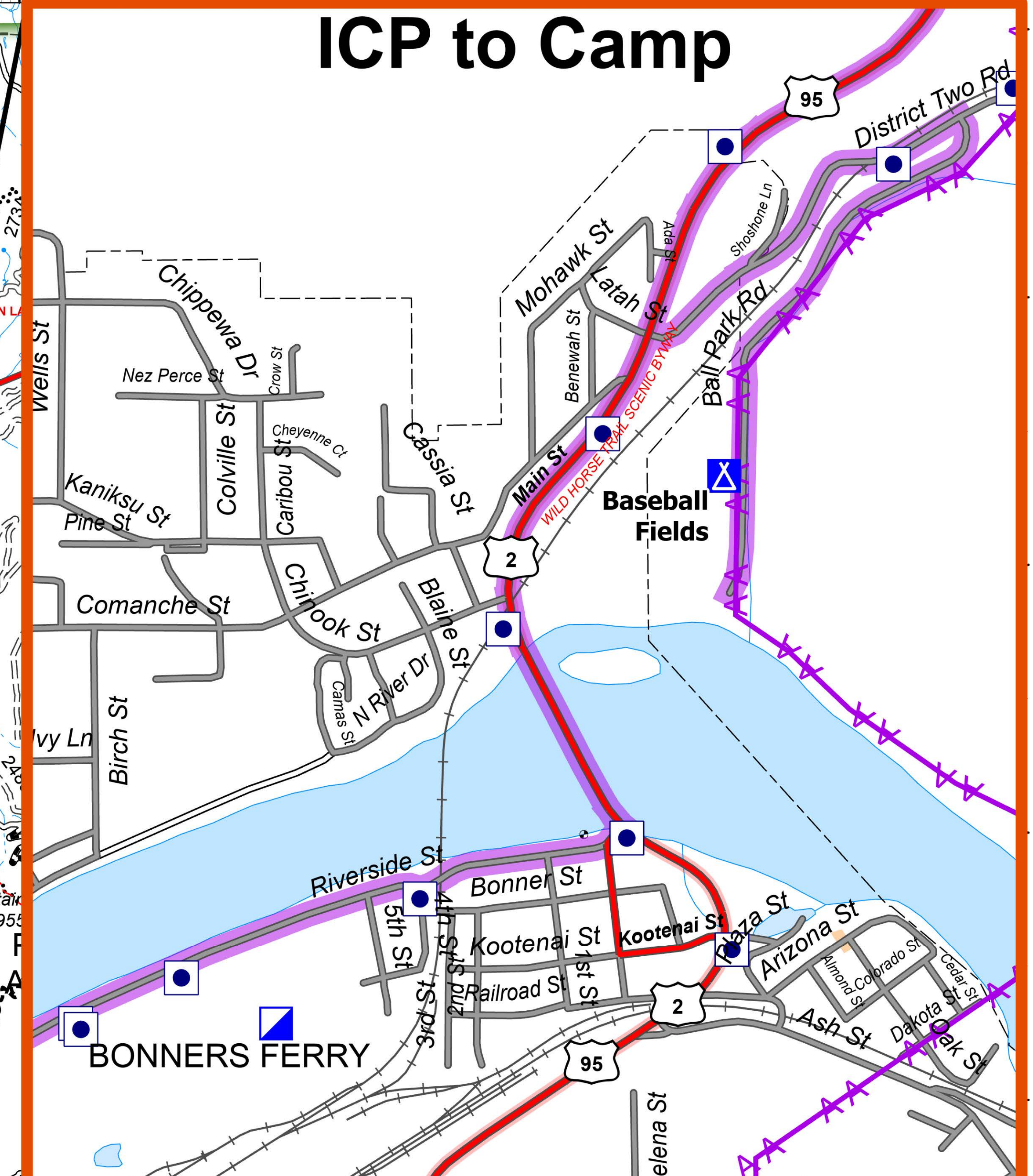


FeatureCategory	Label	LatWGS84_DDM	LongWGS84_DDM
Camp	Baseball Fields	48° 42.210' N	116° 18.561' W
Camp	Rotary Park at Lions Den Rd	48° 39.829' N	116° 24.426' W
Drop Point	1	48° 47.698' N	116° 24.796' W
Drop Point	10	48° 50.682' N	116° 25.424' W
Drop Point	100	48° 37.121' N	116° 08.032' W
Drop Point	101	48° 36.848' N	116° 08.069' W
Drop Point	20	48° 53.292' N	116° 25.941' W
Drop Point	22	48° 54.311' N	116° 24.090' W
Drop Point	3	48° 49.403' N	116° 24.913' W
Drop Point	30	48° 55.128' N	116° 29.608' W
Drop Point	6	48° 50.199' N	116° 25.229' W
Drop Point	90	48° 39.667' N	116° 06.674' W
Helibase		48° 43.559' N	116° 17.727' W
Helispot	1	48° 38.058' N	116° 09.353' W
Helispot	11	48° 47.577' N	116° 24.523' W
Helispot	15	48° 52.930' N	116° 26.061' W
Incident Command Post		48° 41.718' N	116° 19.180' W
Repeater	CMD 7	48° 52.665' N	116° 12.912' W
Safety Zone		48° 51.025' N	116° 25.005' W
Safety Zone		48° 46.413' N	116° 24.123' W
Safety Zone		48° 47.589' N	116° 24.508' W



## Transportation

Kootenai River Complex  
2022-IDIPF-000653  
9/29/2022  
22,482 acres at 9/28/22 1921  
Acres from IR

Travel Route	Lookout	Culvert	US Secondary Route
Dip Site	Fire Origin	Mobile Weather Unit	State Primary Route
Helispot	Value at Risk	Repeater	Paved Roads
Helibase	Other	Safety Zone	Dirt (Not Paved)
Division Break	Gate	Hazard	Indian Reservation
Incident Command Post	Bridge	Water Source	Wildfire Daily Fire Perimeter
Drop Point	Stream Crossing	US Primary Route	
Camp	Landing or Log Deck		

9/29/2022 04:13  
North American 1983 Datum, LatLong Grid