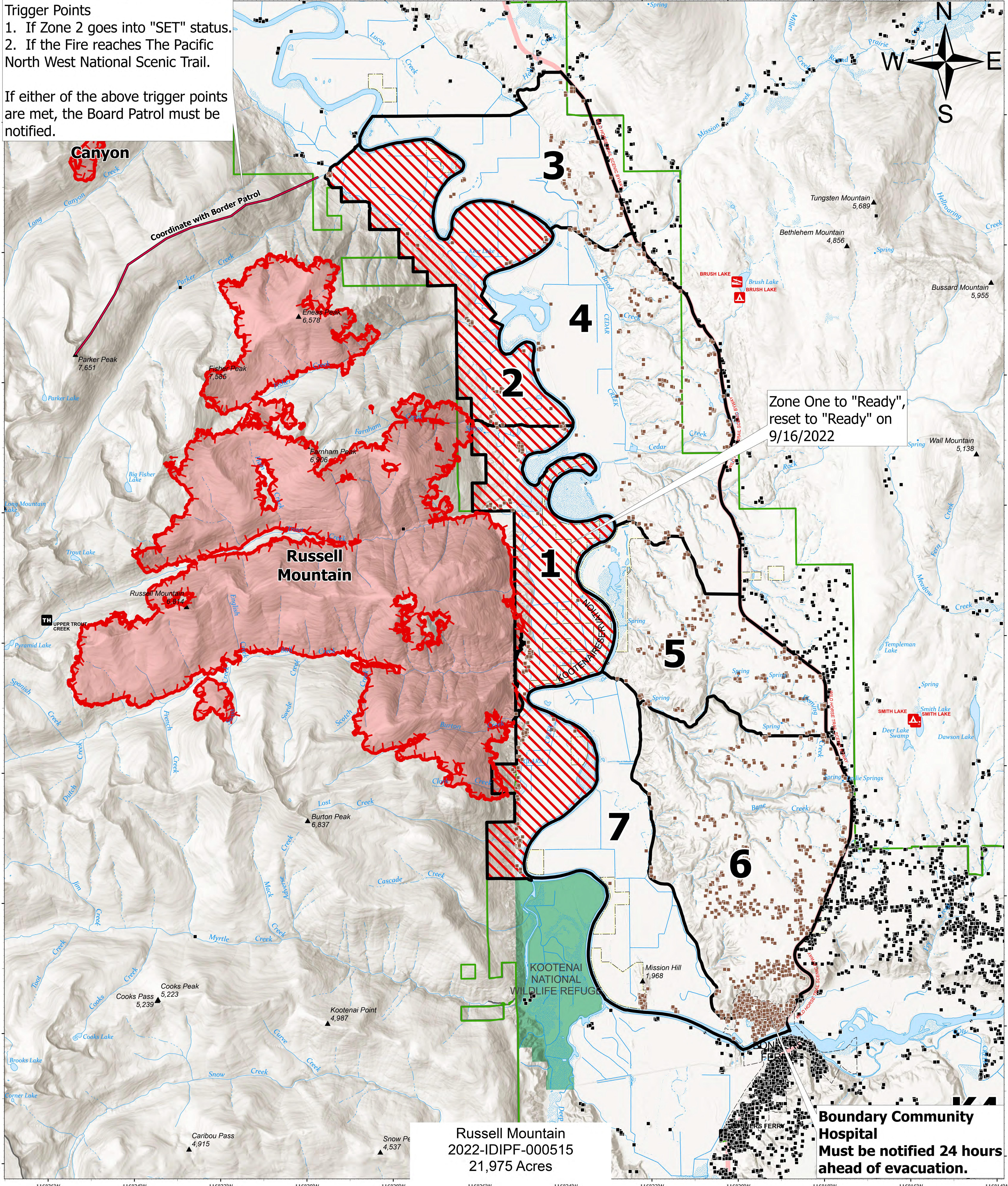


Trigger Points
 1. If Zone 2 goes into "SET" status.
 2. If the Fire reaches The Pacific North West National Scenic Trail.

If either of the above trigger points are met, the Board Patrol must be notified.



Russell Mountain
 2022-IDIPF-000515
 21,975 Acres

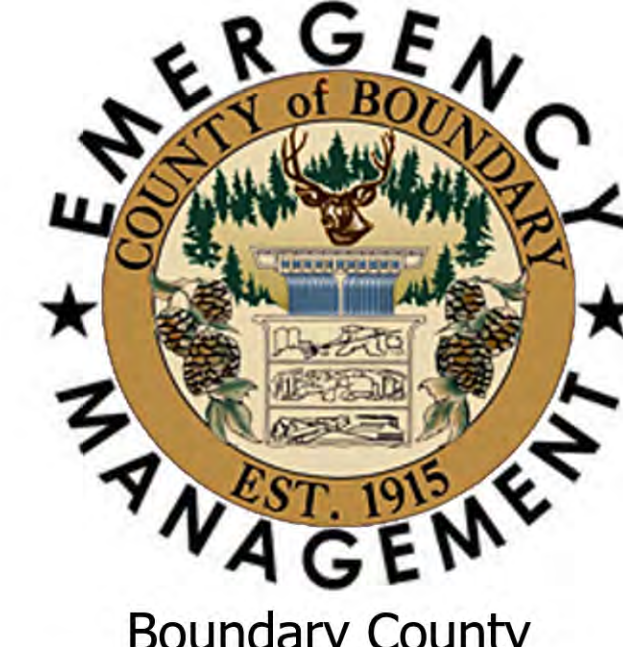
Boundary Community Hospital
 Must be notified 24 hours ahead of evacuation.

Ready, Set, Go North

Kootenai River Complex
 2022-IDIPF-000653
 09/30/2022 to 10/03/20
 22,482 acres at 9/28/22 1904
 Acres from IR

- Evacuation Areas**
- Ready
 - Set
 - Go
 - Other Evacuation Areas

- Evacuation Area Structures
- Idaho Structures
- Wildfire Daily Fire Perimeter
- Administrative FS Boundary
- U.S. Fish Wildlife Service Lands



Boundary County
 Emergency Management
 Public Information
 (208) 290-5316

EA Gold IMT
 9/29/2022 1840
 North American 1983 Datum. Lat/Long Grid

Boundary County
 Sheriff's Office
 (208)267-3151