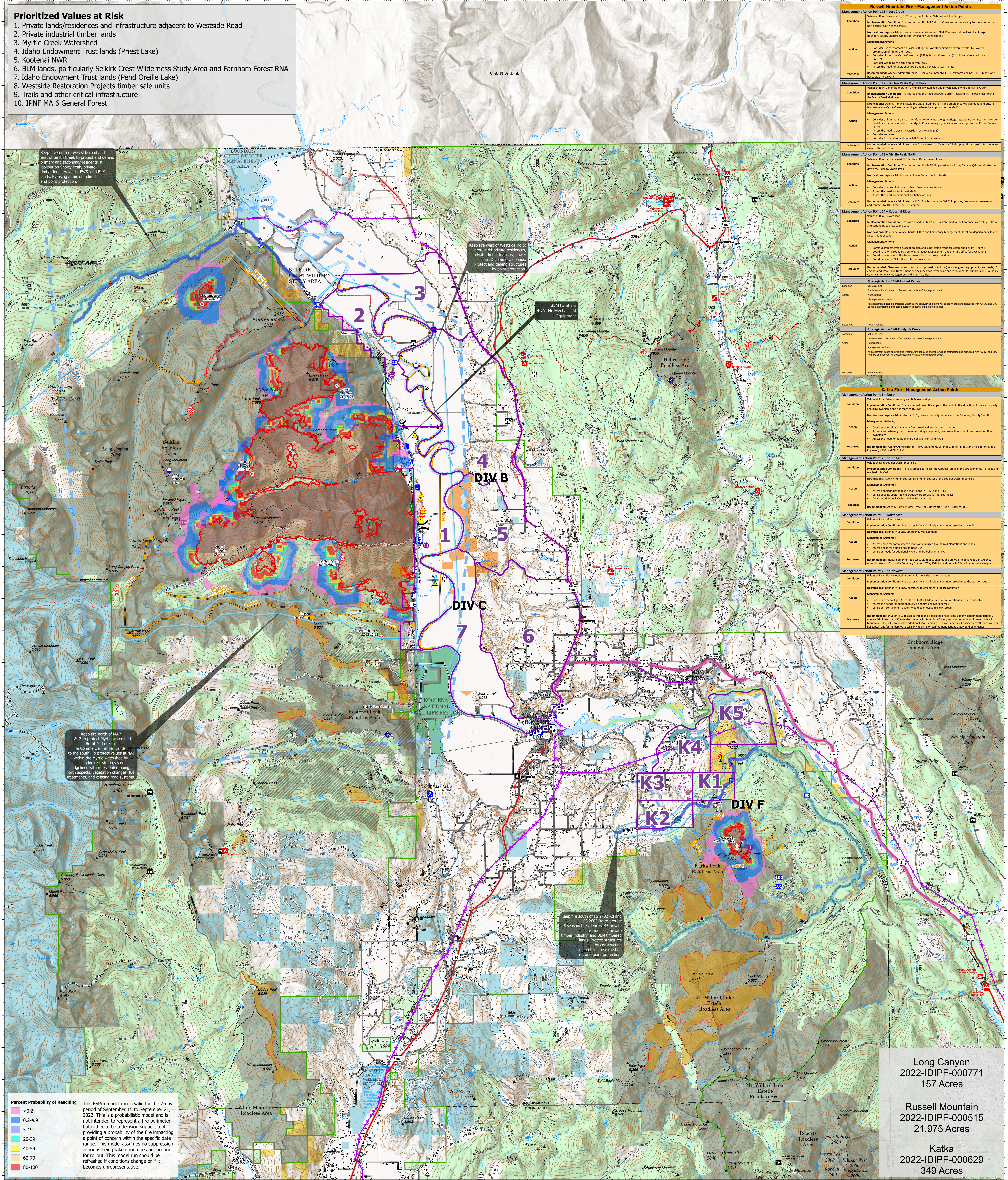
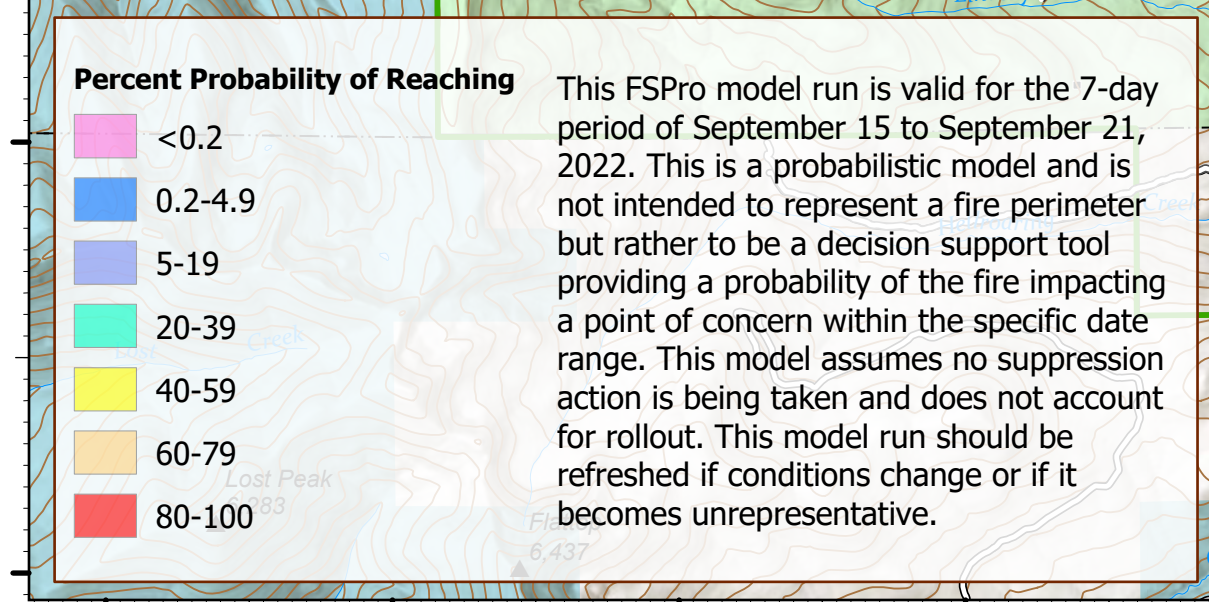


- ### Prioritized Values at Risk
1. Private lands/residences and infrastructure adjacent to Westside Road
 2. Private industrial timber lands
 3. Myrtle Creek Watershed
 4. Idaho Endowment Trust lands (Priest Lake)
 5. Kootenai NWR
 6. BLM lands, particularly Selkirk Crest Wilderness Study Area and Farnham Forest RNA
 7. Idaho Endowment Trust lands (Pend Oreille Lake)
 8. Westside Restoration Projects timber sale units
 9. Trails and other critical infrastructure
 10. IPNF MA 6 General Forest



Russell Mountain Fire - Management Action Points	
Management Action Point 11 - Lost Creek	<p>Values at Risk: Private lands, BLM lands, the Kootenai National Wildlife Refuge.</p> <p>Implementation Condition: Fire has reached this MAP at Lost Creek and is threatening to spread onto the north aspect south of the creek.</p> <p>Notification: Agency Administrators, private land owners, BLM, Kootenai National Wildlife Refuge, Boundary County Sheriff's Office and Emergency Management.</p> <p>Management Action(s): <ul style="list-style-type: none"> Consider use of aircraft on Cascade Ridge and/or other aircraft activity to slow the progression of the fire further south. Consider using the Myrtle Creek Road (MCR), Burton Creek Road (BCR) and Cascade Ridge road (CRS). Consider engaging this cabin on Burton Peak. Assess the need for additional MAPs and fire behavior assessments. </p> <p>Resources: Agency Administrators, PCL Heavy equipment/HCES, Task force engine/TTCO, Type 1 or 2 Helicopter (if available).</p>
Management Action Point 12 - Burton Peak/Myrtle Peak	<p>Values at Risk: City of Bonanza Ferry municipal watershed and private land owners in Myrtle Creek.</p> <p>Implementation Condition: Fire has reached the ridge between Burton Peak and Myrtle Peak just north of the Myrtle Creek drainage.</p> <p>Notification: Agency Administrators, the City of Bonanza Ferry and Emergency Management, and private land owners in Myrtle Creek dependent on the approach to the MAP.</p> <p>Management Action(s): <ul style="list-style-type: none"> Consider using aircraft or crew to deliver water along the ridge between Burton Peak and Myrtle Peak to check the spread into the Myrtle Creek drainage (municipal water supply for the City of Bonanza Ferry). Assess the need to close the Myrtle Creek Road (MCR). Consider aerial attack. Consider the need for additional MAPs and fire behavior runs. </p> <p>Resources: Agency Administrators, PCL Air (helicopters), Type 1 or 2 Helicopter (Air tankers), Personnel to assist with aircraft (if available).</p>
Management Action Point 13 - Myrtle Peak North	<p>Values at Risk: Lands owned by the Idaho Department of Lands.</p> <p>Implementation Condition: Fire has reached this MAP Ridge just east of Long Canyon (B) private land south of the ridge to Myrtle Peak.</p> <p>Notification: Agency Administrators, Idaho Department of Lands.</p> <p>Management Action(s): <ul style="list-style-type: none"> Consider the use of aircraft to check the spread to the west. Assess the need for additional MAPs. Assess the need for additional fire behavior runs. </p> <p>Resources: Recommended: Agency Administrators, PCL, Fire Personnel for WFOSS updates, the behavior assessments, and coordination with local fire departments for structure protection.</p>
Management Action Point 14 - Kootenai River	<p>Values at Risk: Private lands.</p> <p>Implementation Condition: Fire has crossed the MAP and is established in the Kootenai River valley bottom and continuing to grow to the east.</p> <p>Notification: Boundary County Sheriff's Office and Emergency Management, local fire departments, Idaho Department of Lands.</p> <p>Management Action(s): <ul style="list-style-type: none"> Continue implementing evacuation plan and suppression response established by MA 10 from 4/20/22. Coordinate with local fire departments for structure protection. Coordinate with local fire departments for structure protection. </p> <p>Resources: Recommended: Team resources to conduct suppression actions (crew, engine, equipment, overhead), IDL, engine and crew, the Department engine, Aviation fixed wing and rotor wing for suppression, Boundary County Sheriff's Office, and local fire departments.</p>
Strategic Action 10 MAP - Lost Canyon	<p>Values at Risk: Private lands.</p> <p>Implementation Condition: If the reaches the line of Strategic Action 10.</p> <p>Notification: Agency Administrators, PCL, Fire Personnel for WFOSS updates, the behavior assessments, and coordination with local fire departments for structure protection.</p> <p>Management Action(s): An assessment based on predicted weather, fire behavior, and top will be submitted and discussed with MA, IC, and OPS to make an informed, risk-based decision to activate the strategic action.</p> <p>Resources: Recommended: PCL Heavy equipment/HCES, Task force engine/TTCO, Type 1 or 2 Helicopter (if available).</p>
Strategic Action 8 MAP - Myrtle Creek	<p>Values at Risk: Private lands.</p> <p>Implementation Condition: If the reaches the line of Strategic Action 8.</p> <p>Notification: Agency Administrators, PCL, Fire Personnel for WFOSS updates, the behavior assessments, and coordination with local fire departments for structure protection.</p> <p>Management Action(s): An assessment based on predicted weather, fire behavior, and top will be submitted and discussed with MA, IC, and OPS to make an informed, risk-based decision to activate the strategic action.</p> <p>Resources: Recommended: PCL Heavy equipment/HCES, Task force engine/TTCO, Type 1 or 2 Helicopter (if available).</p>

Katka Fire - Management Action Points	
Management Action Point 1 - North	<p>Values at Risk: Private property and BLM ownership.</p> <p>Implementation Condition: Fire has reached the slope to the north in the direction of private property and BLM ownership and has reached this MAP.</p> <p>Notification: Agency Administrator, BLM, private property owners and the Boundary County Sheriff.</p> <p>Management Action(s): <ul style="list-style-type: none"> Consider using aircraft to check fire spread and conduct aerial work. Assess areas where ground forces, including equipment, can take action to limit the spread to other properties. Assess the need for additional fire behavior runs and MAPs. </p> <p>Resources: Recommended: Agency Administrator, Heavy Equipment, Type 2 dozer, Type 3 or 2 Helicopter, Type 6 Helicopter, IDL.</p>
Management Action Point 2 - Southeast	<p>Values at Risk: Boulder Dash timber sale.</p> <p>Implementation Condition: Fire has spread southeast into Cascade Creek in the direction of Burns Ridge and Boulder Dash.</p> <p>Notification: Agency Administrator, State Administrator of the Boulder Dash timber sale.</p> <p>Management Action(s): <ul style="list-style-type: none"> Assess opportunities to take action along FS 2662 and 2113. Consider using aircraft to check fire spread and conduct aerial work. Consider additional MAPs and fire behavior runs. </p> <p>Resources: Recommended: Agency Administrator, Type 1 or 2 Helicopter, Type 6 Engine, TFD.</p>
Management Action Point 3 - Northeast	<p>Values at Risk: Private lands.</p> <p>Implementation Condition: Fire crosses MAP and is likely to continue spreading downhill.</p> <p>Notification: Boundary County Emergency Management.</p> <p>Management Action(s): <ul style="list-style-type: none"> Assess needs for containment system on managed ground (plantations and road). Assess the need for holding fire on Road 114. Consider needs for additional MAPs and the behavior analysis. </p> <p>Resources: Recommended: Heavy equipment to access old roads, engine and crew for holding Road 114, Agency Administrator and local fire departments, IDL, PCL, and other local fire departments.</p>
Management Action Point 4 - Southwest	<p>Values at Risk: Back Mountain Communications site and old lookout.</p> <p>Implementation Condition: Fire crosses MAP and is likely to continue spreading to the west or south.</p> <p>Notification: Boundary County, entities with equipment at Back Mountain.</p> <p>Management Action(s): <ul style="list-style-type: none"> Consider a road right access threat to Back Mountain Communications site and old lookout. Consider the need for additional MAPs and the behavior analysis. Consider if containment actions would be effective to slow spread. </p> <p>Resources: Recommended: DIVS or TFD to assess threat and determine effectiveness of any containment actions, Agency Administrator, Boundary County and entities with equipment at Back Mountain, Boundary County, IDL, PCL, and other local fire departments.</p>



Strategical Operational Planning

Kootenai River Complex
2022-IDIPF-000653
09/30/2022 to 10/03/2022
22,482 acres at 9/28/22 1904
Acres from IR

- Structures
- Other Property
- Pump
- Water Tank
- Dip Site
- Helispot
- Helibase
- Division Break
- Incident Command Post
- Drop Point
- Camp
- Lookout
- Fire Origin
- Value at Risk
- Other
- Gate
- Bridge
- Stream Crossing
- Landing or Log Deck
- Culvert
- Mobile Weather Unit
- Repeater
- Safety Zone
- Hazard
- Water Source
- Completed Dozer Line
- Completed Hand Line
- Completed Mixed Construction Line
- Completed Road as Line
- Planned Dozer Line
- Planned Hand Line
- Planned Road as Line
- Access or Improved Road
- Management Action Point
- Aerial Hazard
- Temporary Flight Restriction
- Fire Edge (Field Collection)
- Wildfire Daily Fire Perimeter
- Historic Fire Perimeters
- Evacuation Areas (RSG)
- American Indian Lands
- Forest Service Land
- State Public Lands
- U.S. Fish Wildlife Service Lands
- Bureau of Land Management Lands
- BLM Farnham Forest RNA

Long Canyon
2022-IDIPF-000771
157 Acres

Russell Mountain
2022-IDIPF-000515
21,975 Acres

Katka
2022-IDIPF-000629
349 Acres

Rx Burns

Timber Sales

Critical Value at Risk Point

- Catastrophic
- Critical
- Moderate

EA Gold IMT
09/29/2022 2016
North American 1983 Datum, Lat/Long Grid