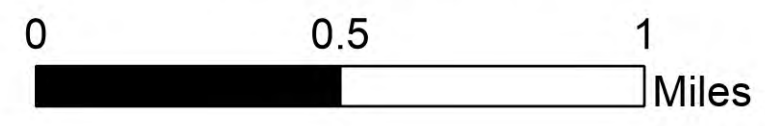
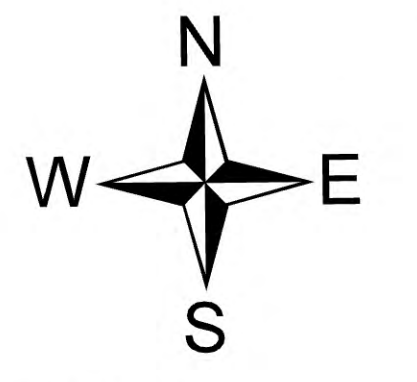
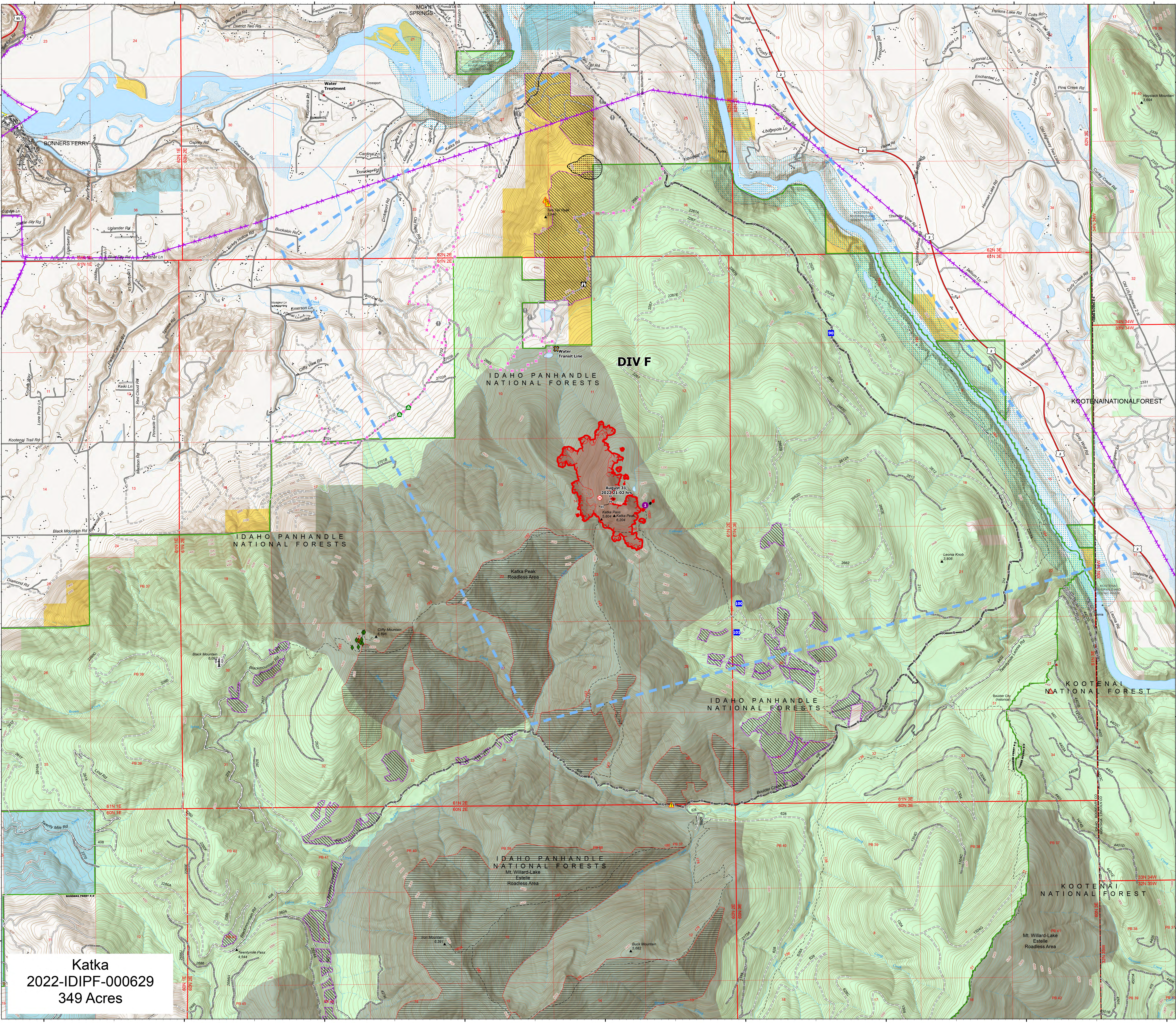


# Operations South

Kootenai River Complex  
2022-IDIPF-000653  
09/30/2022 to 10/03/2022  
22,482 acres at 9/28/22 1904  
Acres from IR



- Helispot
- Drop Point
- Camp
- Lookout
- Fire Origin
- Value at Risk
- Other
- Landing or Log Deck
- Hazard
- Completed Hand Line
- Completed Road as Line
- Planned Hand Line
- Planned Road as Line
- Access or Improved Road
- Aerial Hazard
- Temporary Flight Restriction
- Wildfire Daily Fire Perimeter
- IR Heat Perimeter
- IR Intense Heat
- IR Scattered Heat
- US Primary Route
- Paved Roads
- Dirt (Not Paved)
- Indian Reservation
- American Indian Lands
- Forest Service Land
- State Public Lands
- Bureau of Land Management Lands
- Idaho Structures
- County Communications Site
- Water Trans Line
- Timber Sales
  - Two Tail Forest Health\_Fuels Project
  - Black Boulder GNA Timber Sale
  - Boulder Dash Timber Sale
  - BoulderRxBurns
  - T&E plant habitat
  - WBP



**Katka**  
2022-IDIPF-000629  
349 Acres

EA Gold IMT  
9/29/2022 1840  
North American 1983 Datum, Lat/Long Grid