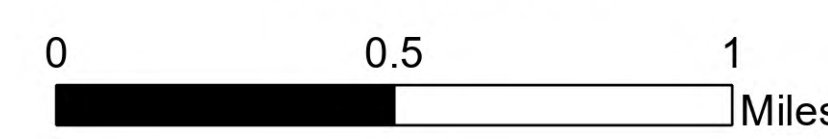
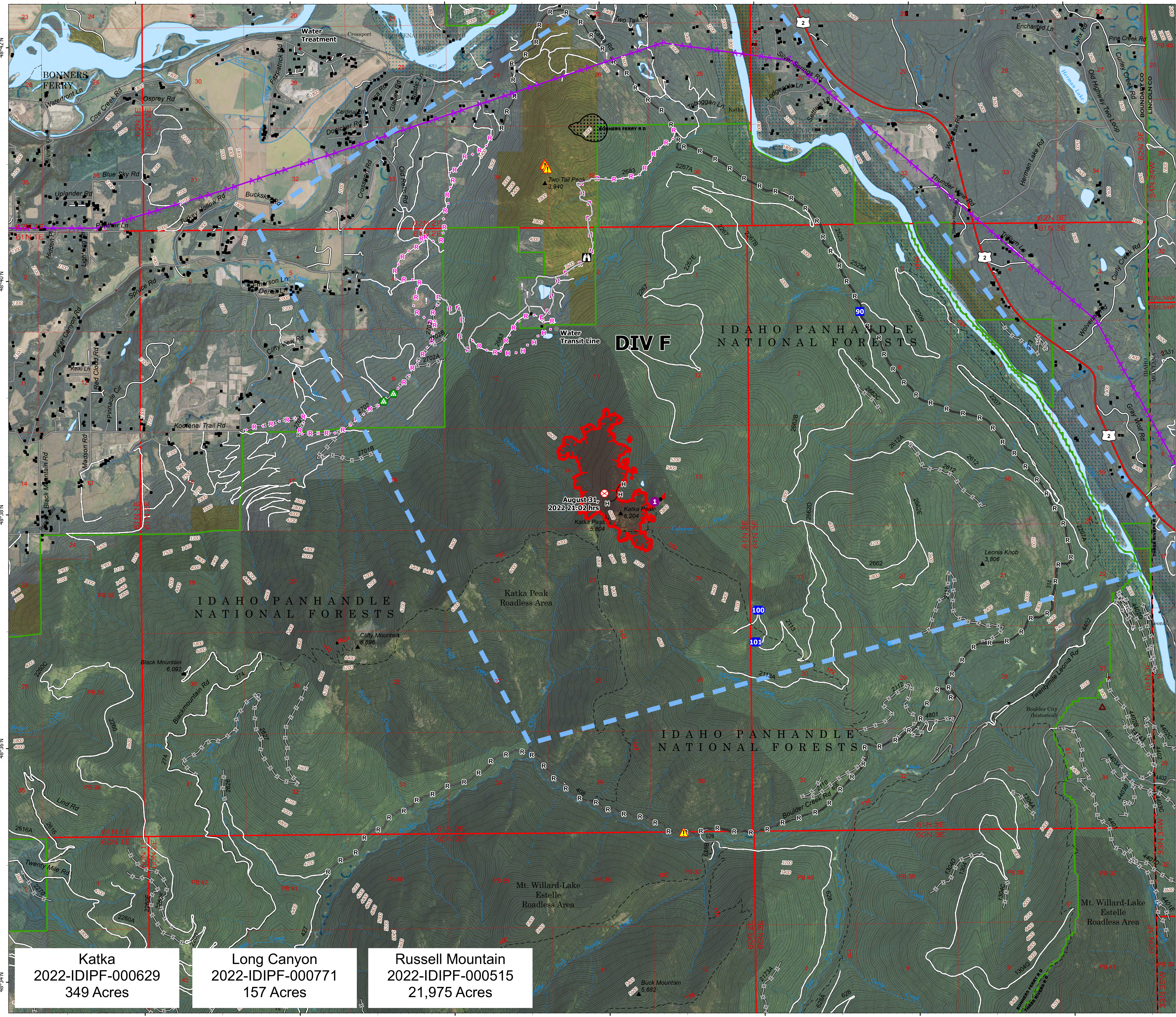


# Operations\_Ortho

South  
Kootenai River Complex  
2022-IDIPF-000653  
09/30/2022 to 10/03/2022  
22,482 acres at 9/28/22 1904  
Acres from IR



- Helispot
- Drop Point
- 🏠 Lookout
- ⊗ Fire Origin
- ⬢ Value at Risk
- ⬢ Other
- 🌳 Landing or Log Deck
- ⚠ Hazard
- Completed Hand Line
- Completed Road as Line
- Planned Hand Line
- Planned Road as Line
- Access or Improved Road
- ⚡ Aerial Hazard
- Temporary Flight Restriction
- 🔴 Wildfire Daily Fire Perimeter
- 🛣 US Primary Route
- 🛣 Paved Roads
- 🛣 Dirt (Not Paved)
- 🌲 Forest Service Land
- 🌲 State Public Lands
- 🌲 Bureau of Land Management Lands
- 🏠 Idaho Structures



NR Team 4  
9/29/2022 2109  
North American 1983 Datum, Lat/Long Grid

<b>Katka</b> 2022-IDIPF-000629 349 Acres	<b>Long Canyon</b> 2022-IDIPF-000771 157 Acres	<b>Russell Mountain</b> 2022-IDIPF-000515 21,975 Acres
--	--	--